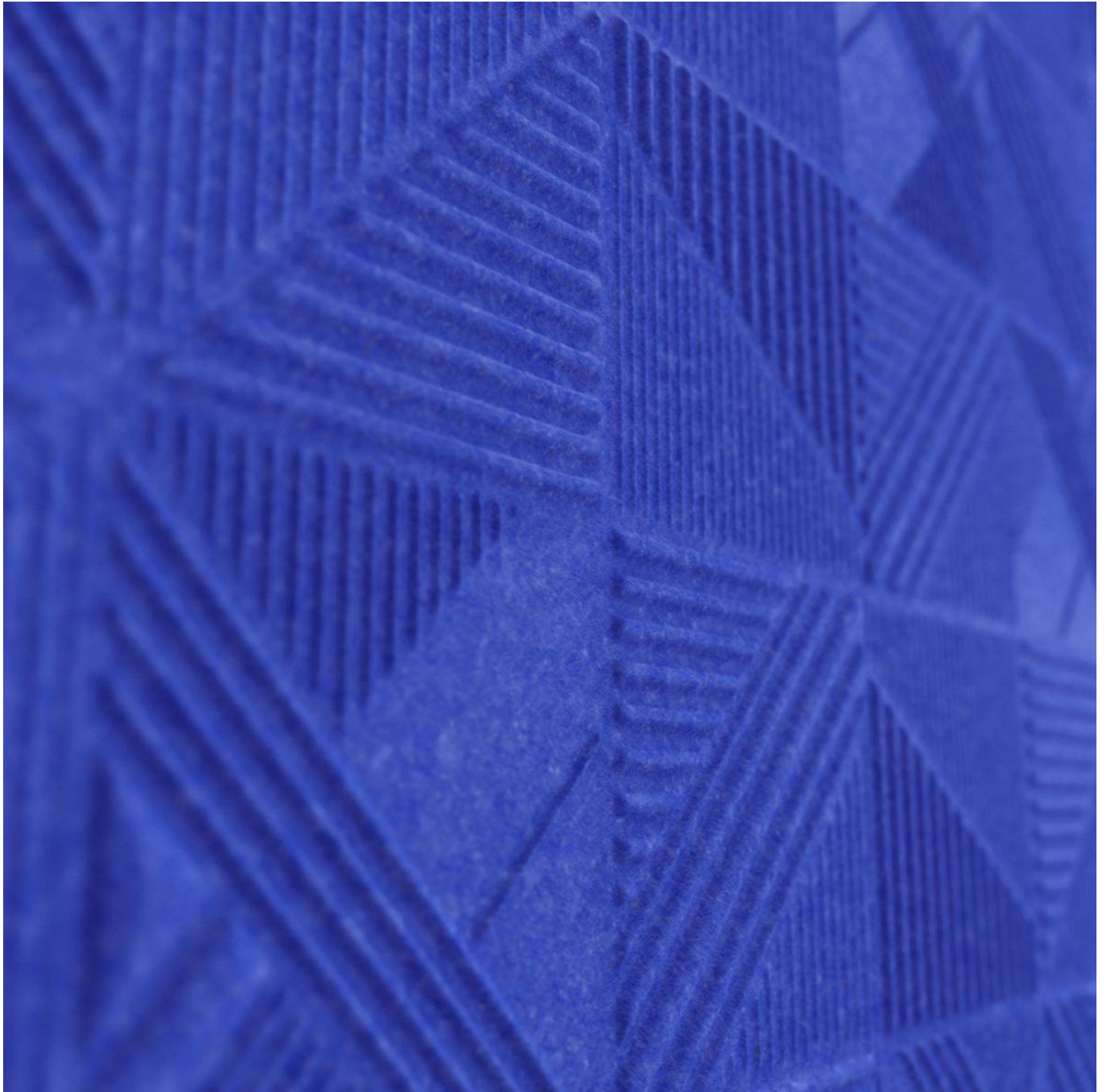


EMBOSSED TAPESTRY

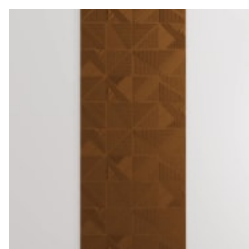
Acoustics » Acoustic Panels



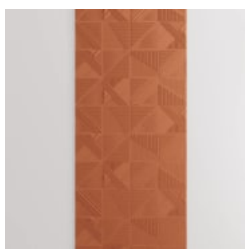
Brand: **Zintra**

EMBOSSED TAPESTRY

Acoustics » Acoustic Panels



BARK/COCOA



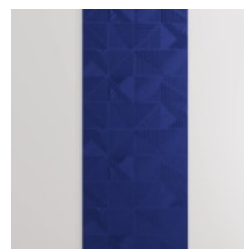
BRICK



CADET



CHAMBRAY/
PERIWINKLE



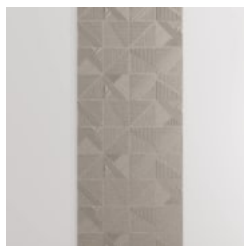
COBALT/NAVY



ECRU/TAUPE



EUCALYPTUS



FOSSIL



FROST/WHITE



GRASS/LIME



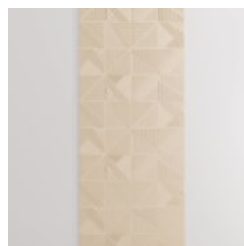
GREIGE



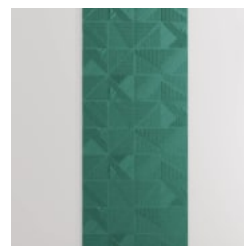
IRON BARK



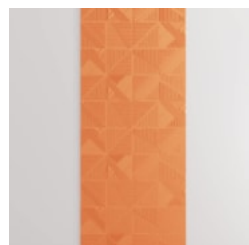
IVORY/MILKY



LINEN/CREAM



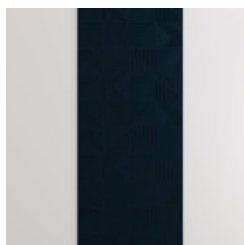
MALACHITE



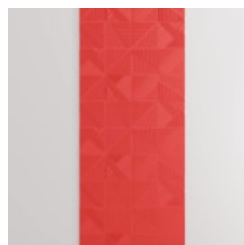
MANDARIN/ORANGE



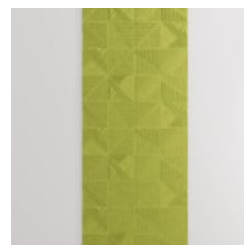
MERBAU



MIDNIGHT



OCHRE/BLUSH



OLIVE



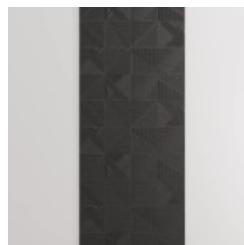
PEBBLE



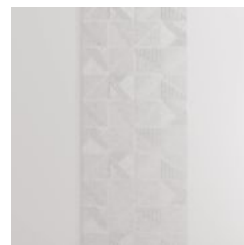
PEWTER/GREY



SKY/BLUE



SLATE/ASH



SMOKE/SILVER

EMBOSSED TAPESTRY

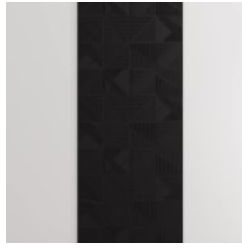
Acoustics » Acoustic Panels



SPOTTED GUM



SUNSHINE/YELLOW



TAR/BLACK

EMBOSSSED TAPESTRY

Acoustics » Acoustic Panels



Zintra Embossed adds a sense of luxury to acoustics and warmth to cold, hard spaces. Tapestry brings a Glen check pattern in a range of 28 colours.

- Absorbs Noise
- Bleach Cleanable
- Environmentally Friendly
- Extended Warranty
- Solution Dyed Yarns

Description

Zintra Embossed adds a luxurious feel to Zintra™s extensive range of acoustic solutions. Ideal for spaces that not only need noise absorption, but also a sumptuous design element only possible through tactile, three-dimensional surfaces. Zintra's heather adds warmth to what can often be cold, hard spaces, while consistent patterns progressively match across sheets so there is a seamless design that's easy to install as either large panels or ceilings tiles. Zintra Embossed Features: * Suitable for wall cladding or ceilings * designed for easy north/south and east/west pattern matching * 108" (2745mm) sheet size allows join-free floor-to-ceiling and easy fitout * Available in 24 colours and 4 wood effects [Download the complete Zintra Embossed brochure](#)

Dimensions

Wall Panels - 2745mm x 1118mm Ceiling Tiles - 594mm x 594mm

Composition

Zintra Acoustic Panel - 100% Solution Dyed (Colour Through) Polyester. 2.3 kg/m²

Finishes

Zintra Panel - Matt. Check out the Zintra 12mm colour range in the DOWNLOADS

EMBOSSSED TAPESTRY

Acoustics » Acoustic Panels

Environmental Info	Easily recycled through standard recycling channels
Fire Rating	<p>Tested in accordance with AS ISO 9705 2003 for the purpose of determining the Group Number classification required by the Building Code of Australia for the control of fire spread on interior wall and ceiling linings.</p> <p>Classification - Group 1 Specific Extinction - Less than 250m²/kg</p>
Warranty	5-year warranty. Visit baresque.com.au/warranty for complete details.
Lead Time	<ul style="list-style-type: none">• 2-3 weeks.• Additonal 1-week for Western Australia.
Suggested Installation	<p>Walls - adhere to substrate using contact adhesive or Liquid Nails.</p> <p>Ceilings - lay tiles into ceiling grid.</p>
Fabrication Techniques	Stanley knife and straight edge
How to Specify	1. Design 2. colour 3. Wall Panel or Ceiling Tile
Care Instructions	<p>Vacuum to remove dust.</p> <p>Dab Zintra with a damp clean cloth and mild solution of liquid detergent and warm water. Repeat using only clean water, then pat dry with a lint free cloth.</p> <p>For difficult stains, use a solution of household bleach (10% bleach / 90% water). To remove the bleach, repeat using a clean, water dampened cloth, then pat dry.</p> <p>Always test in an inconspicuous area first and if you don't see the expected results, contact us.</p>
Customisable	The Zintra Acoustic Solutions range is customisable to your project. Please get in touch with your local contact for details.
Additional Comments	Indoor only. Ceiling Tiles available in a set of 8 Zintra Embossed is only suitable for single sided applications.