

# MIDTOWN

Wallcoverings » Commercial Wallcoverings



Brand: **Versa**

1300 306 399

[info@baresque.com.au](mailto:info@baresque.com.au)

[baresque.com.au](http://baresque.com.au)

1 of 5

# MIDTOWN

Wallcoverings » Commercial Wallcoverings

## COLOURWAY CARD

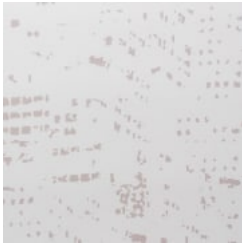
COLOURWAY CARD



ASL-161051 CHICAGO



ASL-161135  
PHILADELPHIA



ASL-161188 BOSTON



ASL-161336 NEW  
YORK



ASL-161370 SEATTLE



ASL-161410 SAN  
FRANCISCO



ASL-161527  
PORTLAND



ASL 161749 AUSTIN

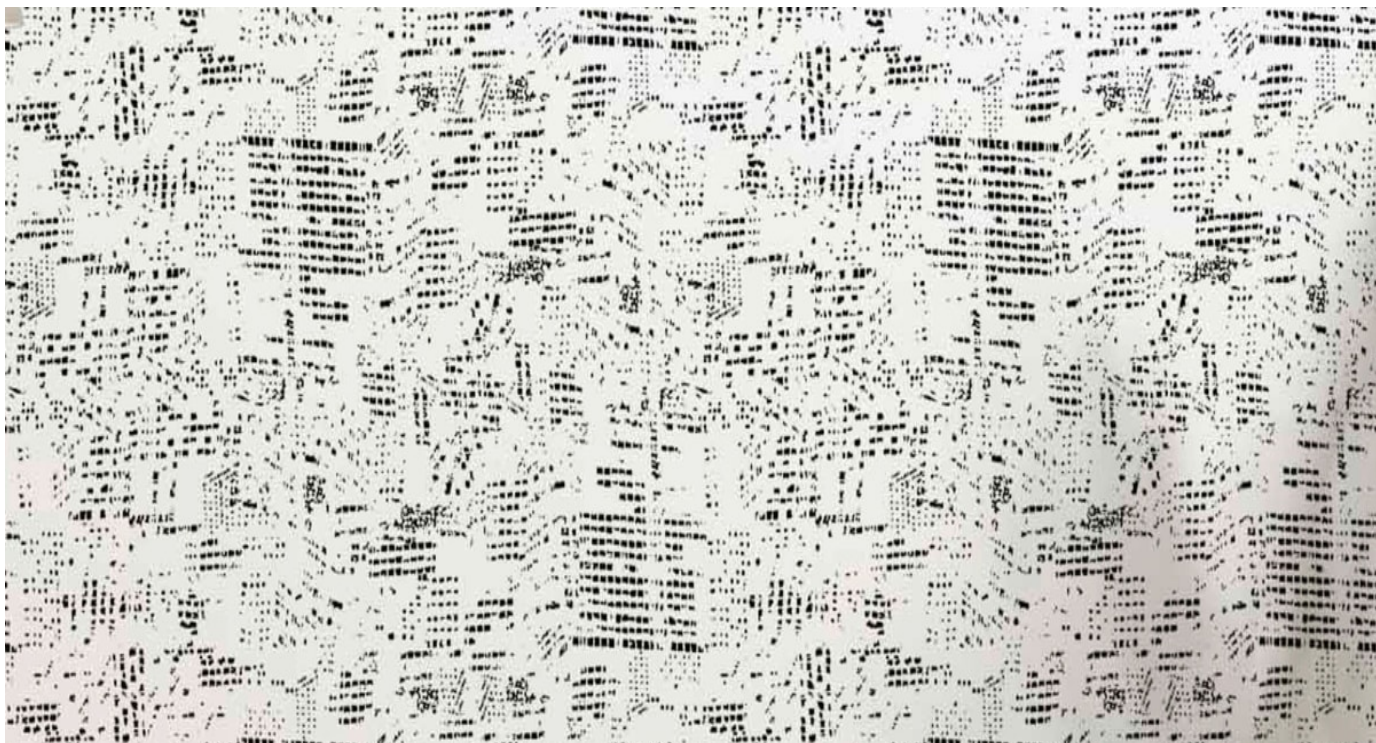


ASL 161966 LOS  
ANGELES



# MIDTOWN

Wallcoverings » Commercial Wallcoverings



Midtown is a 137cm wide commercial wallcovering with a contemporised view of urban living displayed in 7 colours. Versatile, durable and low VOC.

## ● Bleach Cleanable

Description	The essence of city vitality with Midtown - a contemporised view of urban living.
Roll Size	137cm wide x 27.4m - Available by the lineal metre
Composition	Vinyl face on a woven backing 20oz (452 g/m <sup>2</sup> )
Pattern Repeat Size	61 cm V. 1/2 drop match

# MIDTOWN

Wallcoverings » Commercial Wallcoverings

---

## Environmental Info

Formaldehyde free

Heavy metals free

Perfluorooctanoic acid free

No solvent inks

Low VOC emissions. Any VOCs dissipate quickly (faster than paint) through normal ventilation and have no recognized adverse impact on indoor air quality.

Durability means products do not need to be replaced regularly due to wear and tear and being cleanable, vinyl products are ideal for helping keep commercial environments clean of bacteria.

Baresque will only deal with vinyl manufacturers that comply with applicable state and federal regulations, provide a factory that is safe and clean for its employees to work in, recycle scrap and inks during the manufacturing process to minimize waste related to production.

---

## Fire Rating

Tested in accordance with AS ISO 9705 2003 for the purpose of determining the Group Number classification as required by the Building Code of Australia for the control of fire spread on interior wall and ceiling linings.

The result achieved was:

Classification - Group 2

Specific Extinction - Less than 250m<sup>2</sup>/kg

---

## Warranty

5-year warranty. Visit [baresque.com.au/warranty](https://baresque.com.au/warranty) for complete details.

---

## Lead Time

- 2-weeks (approx.) from Wednesday, subject to stock availability.
  - Additional 1-week for Western Australia.
  - Express delivery is available subject to a surcharge. Contact Baresque for details and pricing.
- 

## Suggested Installation

Reverse hang / overlap and double cut.

Baresque recommends and supply Roman brand adhesives and primers.

---

# MIDTOWN

Wallcoverings » Commercial Wallcoverings

---

## Care Instructions

Always use a clean, white, soft cloth.

Use cloth with any of the following in preferred order of us:

1: Clear warm water

2: Mild solution of liquid detergent and warm water

3: Isopropyl Alcohol (a.k.a. rubbing alcohol)

Remove any detergent with a clean, damp cloth. Gently pat dry.

For more difficult stains, dampen a soft white cloth with a solution of household bleach (10% bleach / 90% water). Rub gently.

Rinse with a water dampened cloth to remove bleach concentration.

DO NOT USE solvent based or concentrated abrasive cleaning agents, lacquer thinners, nail polish remover as these may cause discolouration over a period of time.

Always test in an inconspicuous area first. If care instructions don't deliver the expected results, cease cleaning method immediately and contact Baresque for assistance.

---