

MULBERRY

Wallcoverings » Commercial Wallcoverings



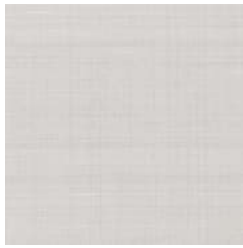
Brand: **Genon**

MULBERRY

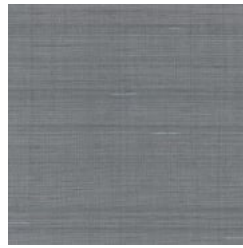
Wallcoverings » Commercial Wallcoverings



COLOURWAY CARD



W2-MU-01 PONGEE
PEARL



W2-MU-02 SURAH
SHADOW



W2-MU-03 BLACK
NOIL



W2-MU-04
CHRYSALIS



W2-MU-05 JADE
GATE



W2-MU-06 ERI
EMERALD



W2-MU-07 ORGANZA



W2-MU-08 SATIN SKY



W2-MU-09 TAFFETA
TEAL



W2-MU-10 GAUZE
GRIS



W2-MU-11 SILVER SILK



W2-MU-12 DUCHESS
BLUE



W2-MU-13 NEUTRAL
TINT



W2-MU-14 RAW SILK



W2-MU-16 COCOON
CREAM



W2-MU-17 GOBI
DESERT



W2-MU-18 BRONZE



W2-MU-19 AGED
IVORY



W2-MU-20 GUAN
GOLD



W2-MU-21 AMBER



W2-MU-22 TUSSAH
TAN



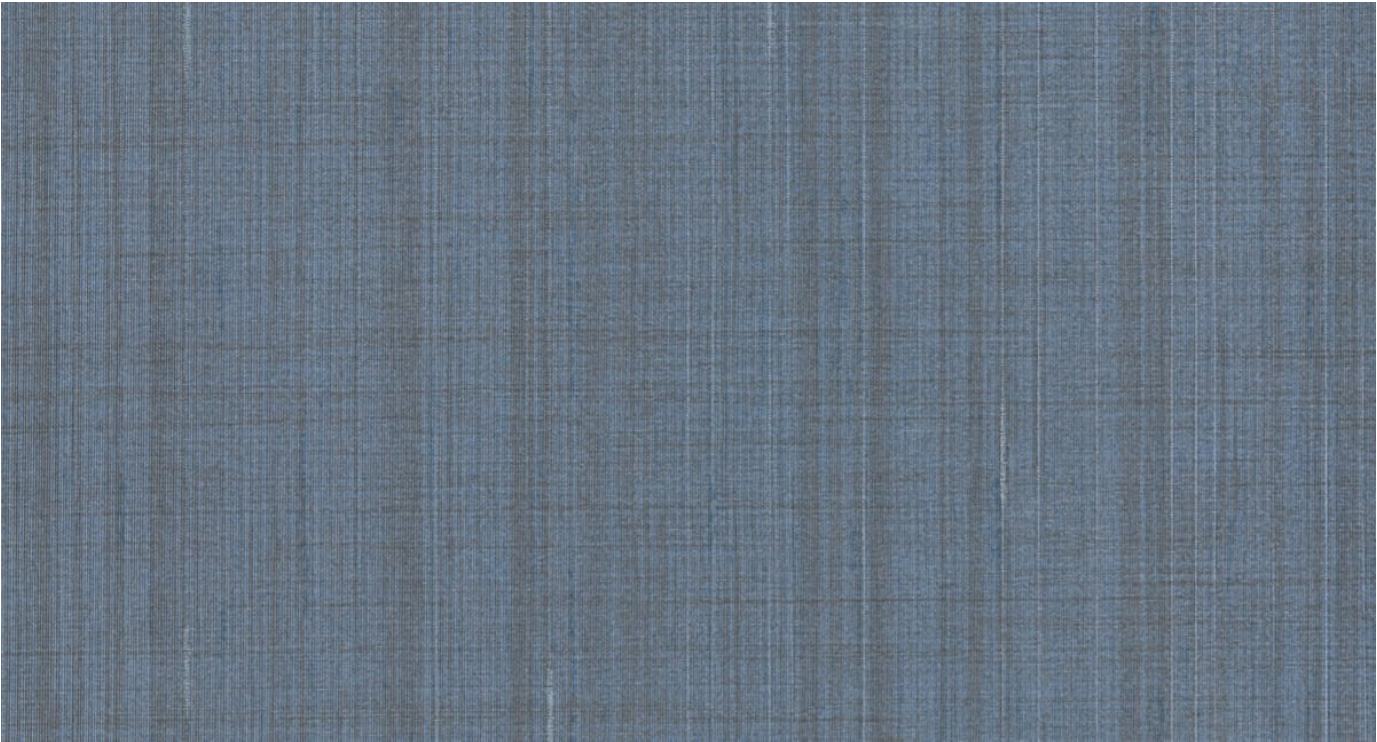
W2-MU-23 TIGER LILY



W2-MU-24 MULBERRY

MULBERRY

Wallcoverings » Commercial Wallcoverings



Mulberry is a 137cm wide commercial wallcovering with a sophisticated look and soft graduations tonal. Available in 24 colourways.

● Bleach Cleanable

| | |
|---------------------|---|
| Description | <p>The elegance of a true silk comes to life in Mulberry, the latest addition from Genon. This graceful pattern's fine brushstrokes and subtle variations create a gentle colour shift.</p> <p>Complete with the soft sheen of a true satin, the organic inconsistencies illuminate the qualities of spun fibers.</p> |
| Roll Size | 137cm wide x 27.4m - Available by the lineal metre |
| Composition | Vinyl face on a fabric backing Equivalent to 20oz (452 g/m²) |
| Pattern Repeat Size | N/A |

MULBERRY

Wallcoverings » Commercial Wallcoverings

Environmental Info

Formaldehyde free

Heavy metals free

Perfluorooctanoic acid free

No solvent inks

Low VOC emissions. Any VOCs dissipate quickly (faster than paint) through normal ventilation and have no recognized adverse impact on indoor air quality.

Durability means products do not need to be replaced regularly due to wear and tear and being cleanable, vinyl products are ideal for helping keep commercial environments clean of bacteria.

Baresque will only deal with vinyl manufacturers that comply with applicable state and federal regulations, provide a factory that is safe and clean for its employees to work in, recycle scrap and inks during the manufacturing process to minimize waste related to production.

Fire Rating

Tested in accordance with AS ISO 9705 2003 for the purpose of determining the Group Number classification as required by the Building Code of Australia for the control of fire spread on interior wall and ceiling linings.

The result achieved was:

Classification - Group 2

Specific Extinction - Less than 250m²/kg

Warranty

5-year warranty. Visit baresque.com.au/warranty for complete details.

Lead Time

- 2-weeks (approx.) from Wednesday, subject to stock availability.
 - Additional 1-week for Western Australia.
 - Express delivery is available subject to a surcharge. Contact Baresque for details and pricing.
-

Suggested Installation

Non reverse hang/overlap double cut.

Baresque recommends and supplies Roman brand adhesives and primers.

MULBERRY

Wallcoverings » Commercial Wallcoverings

Care Instructions

Use cloth with any of the following in preferred order of use:

1: Clear warm water

2: Mild solution of liquid detergent and warm water

3: Isopropyl Alcohol (a.k.a. rubbing alcohol)

Remove any detergent with a clean, damp cloth. Gently pat dry.

For more difficult stains, dampen a soft white cloth with a solution of household bleach (10% bleach / 90% water). Rub gently.

Rinse with a water dampened cloth to remove bleach concentration.

Do not use solvent based or concentrated abrasive cleaning agents, lacquer thinners or nail polish remover as these may cause discolouration over a period of time.

Always test in an inconspicuous area first.

If care instructions don't deliver the expected results, cease cleaning method immediately and contact Baresque for assistance.
