

# TIPPING POINT

Wallcoverings » Commercial Wallcoverings



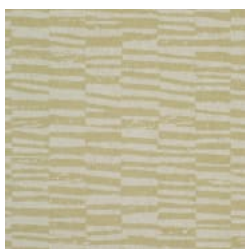
Brand: **Bolta**

# TIPPING POINT

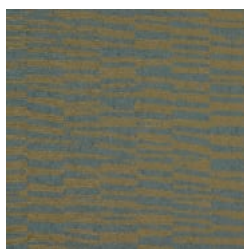
Wallcoverings » Commercial Wallcoverings

## COLOURWAY CARD

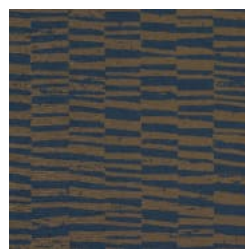
COLOURWAY CARD



BB-TP-01 INCLINED LIME



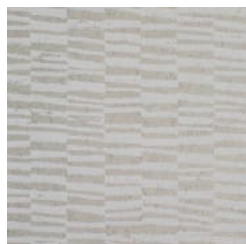
BB-TP-02 SEA GREEN CREST



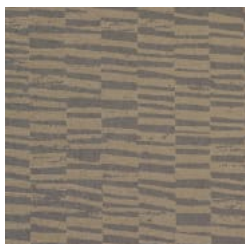
BB-TP-03 MARINE LEAN



BB-TP-04 TIP OF THE ICEBURG



BB-TP-05 SILVER SPILL



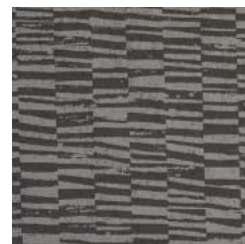
BB-TP-06 RISING MOON



BB-TP-07 PRONE TO PEARL



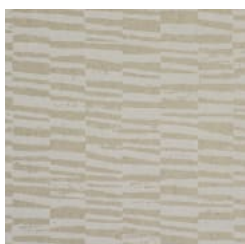
BB-TP-08 SLANTED SLATE



BB-TP-09 JET DIVE



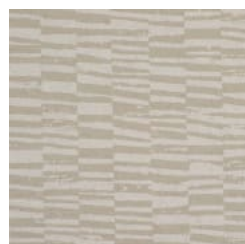
BB-TP-10 GREY SHIFT



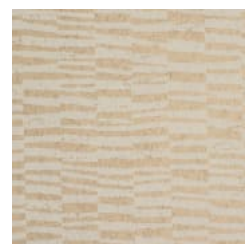
BB-TP-11 IVORY GLOW



BB-TP-12 ELEVATED EBONY



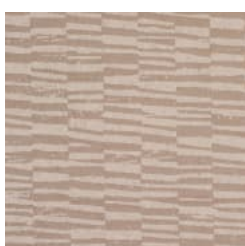
BB-TP-13 SANDY EDGE



BB-TP-14 SUPREME GOLD



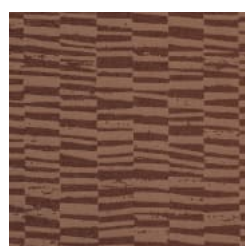
BB-TP-15 MOCHA MINDSET



BB-TP-16 BLUSH CROWN



BB-TP-17 LAVENDER HEIGHTS



BB-TP-18 JUST RIGHT JASPER



# TIPPING POINT

Wallcoverings » Commercial Wallcoverings



Tipping Point is a 137cm wide commercial wallcovering with deconstructed rectangular shapes that's available in 18 colourways. Durable and versatile.

● Bleach Cleanable

Description	Tiled and toppled rectangular shapes from deconstructed buildings are the inspiration for Tipping Point. The mid-scale design is highlighted by a textural emboss, adding richness to the 18 hues which include light, metal toned and deep hues. This pattern is great for spaces needing a hint of pattern such as bathrooms and corridors. Check out Vertex for a coordinating plain.
Roll Size	137cm wide x 27.4m - Available by the lineal metre
Composition	Vinyl face on a fabric backing Equivalent to 20oz (452g/m²)
Pattern Repeat Size	N/A

# TIPPING POINT

Wallcoverings » Commercial Wallcoverings

---

## Environmental Info

Formaldehyde free

Heavy metals free

Perfluorooctanoic acid free

No solvent inks

Low VOC emissions. Any VOCs dissipate quickly (faster than paint) through normal ventilation and have no recognized adverse impact on indoor air quality.

Durability means products do not need to be replaced regularly due to wear and tear and being cleanable, vinyl products are ideal for helping keep commercial environments clean of bacteria.

Baresque will only deal with vinyl manufacturers that comply with applicable state and federal regulations, provide a factory that is safe and clean for its employees to work in, recycle scrap and inks during the manufacturing process to minimize waste related to production.

---

## Fire Rating

Tested in accordance with AS ISO 9705 2003 for the purpose of determining the Group Number classification as required by the Building Code of Australia for the control of fire spread on interior wall and ceiling linings.

The result achieved was:

Classification - Group 2

Specific Extinction - Less than 250m<sup>2</sup>/kg

---

## Warranty

5-year warranty. Visit [baresque.com.au/warranty](https://baresque.com.au/warranty) for complete details.

---

## Lead Time

- 2-weeks (approx.) from Wednesday, subject to stock availability.
  - Additional 1-week for Western Australia.
  - Express delivery is available subject to a surcharge. Contact Baresque for details and pricing.
- 

## Suggested Installation

Reverse hang / overlap and double cut.

Baresque recommends and supply Roman brand adhesives and primers.

---

# TIPPING POINT

Wallcoverings » Commercial Wallcoverings

---

## Care Instructions

Use cloth with any of the following in preferred order of use:

1: Clear warm water

2: Mild solution of liquid detergent and warm water

3: Isopropyl Alcohol (a.k.a. rubbing alcohol)

Remove any detergent with a clean, damp cloth. Gently pat dry.

For more difficult stains, dampen a soft white cloth with a solution of household bleach (10% bleach / 90% water). Rub gently.

Rinse with a water dampened cloth to remove bleach concentration.

Do not use solvent based or concentrated abrasive cleaning agents, lacquer thinners or nail polish remover as these may cause discolouration over a period of time.

Always test in an inconspicuous area first.

If care instructions don't deliver the expected results, cease cleaning method immediately and contact Baresque for assistance.

---