

CORK COBRA

Wallcoverings » Decorative Wallcoverings



Brand: **Omexco**

Collection: **Cobra**

1300 306 399

info@baresque.com.au

baresque.com.au

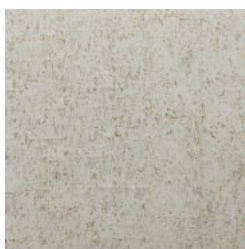
1 of 4

CORK COBRA

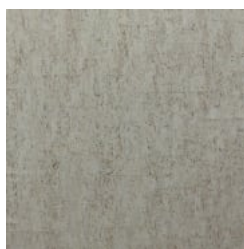
Wallcoverings » Decorative Wallcoverings

COLOURWAY CARD

COLOURWAY CARD



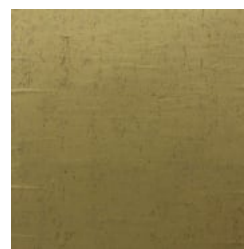
CA11 WHITE



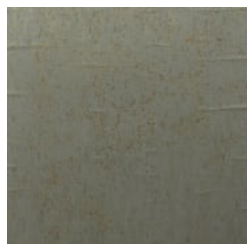
CA12 LIGHT GREY



CA13 WARM GREY



CA15 GOLD



CA17 BLUE



CA14

CORK COBRA

Wallcoverings » Decorative Wallcoverings



Cork - Cobra is a 91cm wide decorative wallcovering inspired by snake design, semi-plain and faded square motif that's available in 6 colours.

Description	Snake designs are sliding through this new wallcovering collection from Omexco. Cork features strongly with a reptile design, a semi-plain and a faded square motif. Embracing the earthy tones of the brown tiger snake, white python, stained cobra and more, many of the designs are enhanced with a shimmer of gold, silver or copper, mimicking sunlight shimmering off reptile skin. Search Cobra to find other designs in this collection.
Roll Size	91cm wide - Available by the lineal metre
Composition	Printed cork on paper backing
Pattern Repeat Size	N/A
Fire Rating	<p>Tested in accordance with AS ISO 9705 2003 for the purpose of determining the Group Number classification as required by the Building Code of Australia for the control of fire spread on interior wall and ceiling linings.</p> <p>The result achieved was: Classification - Group 2 Specific Extinction - Less than 250m²/kg</p>

CORK COBRA

Wallcoverings » Decorative Wallcoverings

Warranty	2-year warranty. Visit baresque.com.au/warranty for complete details.
Lead Time	<ul style="list-style-type: none">• 2-weeks (approx.) from Wednesday, subject to stock availability.• Additional 1-week for Western Australia.• Express delivery is available subject to a surcharge. Contact Baresque for details and pricing.
Suggested Installation	<p>Reverse hang alternate drops / butt join.</p> <p>Cork needs to be installed with care.</p> <p>Using a rubber roller (not a brush or a plastic pallet) will mean loose corners/edges will remain limited, even and barely visible.</p> <p>To remove irregularities glue loose parts onto the backing with a small amount of non-staining cellulose adhesive.</p> <p>Baresque recommends and supply Roman brand adhesives and primers.</p>
Care Instructions	<p>Always use a clean, white, soft cloth.</p> <p>Remove liquid stains immediately using a dry cloth. Avoid hard scrubbing.</p> <p>For tougher stains, dampen the cloth with warm water or a weak dilution of liquid detergent and apply being careful not to soak the material. Always work towards the centre of the stain so as to avoid further spreading.</p> <p>Remove any detergent with a clean, damp cloth. Gently pat dry.</p> <p>Always test in an inconspicuous area first.</p>
Additional Comments	Search Cobra to find other designs in this collection. Some slight "lifting" of the cork is an inherent and unavoidable characteristic of this product. Loose parts may be glued onto the backing with a little bit of non-staining cellulose adhesive.