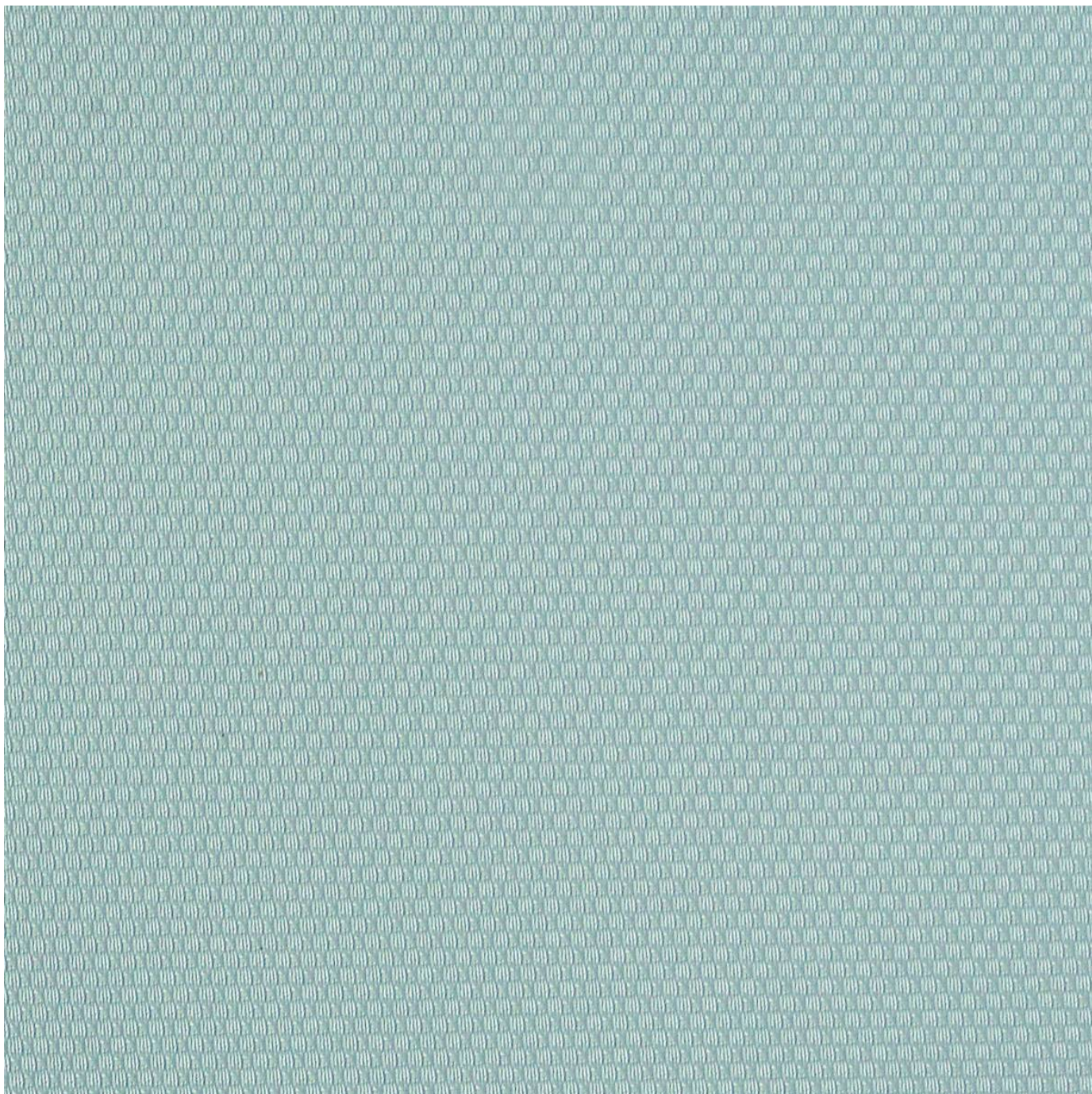


# MOTIVE

**Fabrics** » Vinyl and Faux Leather Fabrics

---



Brand: **Burch**

1300 306 399

[info@baresque.com.au](mailto:info@baresque.com.au)

[baresque.com.au](http://baresque.com.au)

1 of 4



# MOTIVE

Fabrics » Vinyl and Faux Leather Fabrics

## COLOURWAY CARD

COLOURWAY CARD	 1009325 SHADOW	 1009326 METEOR	 1009327 COIN	 1009328 JET
 1009329 ESPRESSO	 1009330 BRONZE	 1009331 RUSSET	 1009332 KHAKI	 1009333 WHEAT
 1009334 PEARL	 1009335 CHAMBRAY	 1009336 PACIFIC	 1009337 TWILIGHT	 1009338 SPRING
 1009339 DANDELION	 1009340 MELON	 1009341 CRANBERRY	 1009342 GRAPE	

# MOTIVE

Fabrics » Vinyl and Faux Leather Fabrics



Motive is a 137cm wide vinyl coated fabric that's available in 18 colours. Cleanable with warm water.

● Bleach Cleanable

● Moisture Barrier

Roll Size	137cm wide x 27.4m - Available by the lineal metre
Composition	Vinyl face on a 100% polyester backing
Abrasion	100,000+ double rubs (Wyzenbeek)
Pattern Repeat Size	N/A
Fire Rating	Tested in accordance with AS1530.3 Spread of Flame Index - 0 Smoke Developed Index - 5
Warranty	2-year warranty. Visit <a href="https://baresque.com.au/warranty">baresque.com.au/warranty</a> for complete details.

# MOTIVE

**Fabrics** » Vinyl and Faux Leather Fabrics

---

## Lead Time

- 2-weeks (approx.) from Wednesday, subject to stock availability.
  - Additional 1-week for Western Australia.
  - Express delivery is available subject to a surcharge. Contact Baresque for details and pricing.
- 

## Care Instructions

Use cloth with any of the following in preferred order of use:

- 1: Clear warm water
- 2: Mild solution of liquid detergent and warm water
- 3: Isopropyl Alcohol (a.k.a. rubbing alcohol)

Remove any detergent with a clean, damp cloth. Gently pat dry.

For more difficult stains, dampen a soft white cloth with a solution of household bleach (10% bleach / 90% water). Rub gently. Rinse with a water dampened cloth to remove bleach concentration.

Do not use solvent based or concentrated abrasive cleaning agents, lacquer thinners or nail polish remover as these may cause discolouration over a period of time.

Always test in an inconspicuous area first.

If care instructions don't deliver the expected results, cease cleaning method immediately and contact Baresque for assistance.

---