

# PETAL DOTS

**Fabrics** » Vinyl and Faux Leather Fabrics



Brand: **CF Stinson**

1300 306 399

[info@baresque.com.au](mailto:info@baresque.com.au)

[baresque.com.au](http://baresque.com.au)

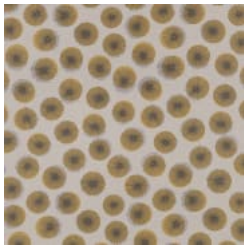
1 of 4

# PETAL DOTS

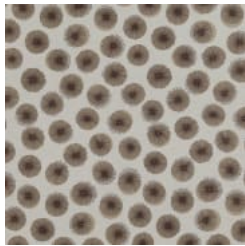
Fabrics » Vinyl and Faux Leather Fabrics

## COLOURWAY CARD

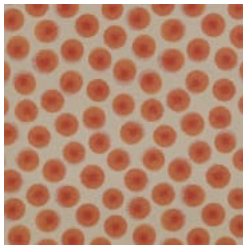
COLOURWAY CARD



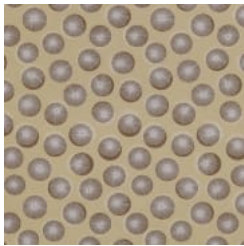
PDO 50 SUNFLOWER



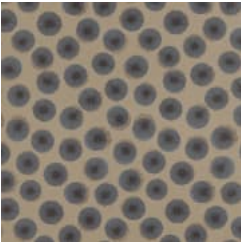
PDO 51 PUMICE



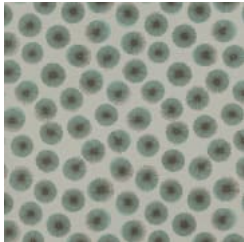
PDO 52 WILD FIRE



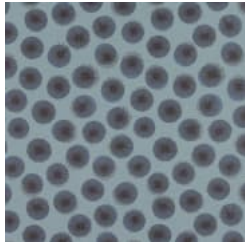
PDO 53 SAND DUNE



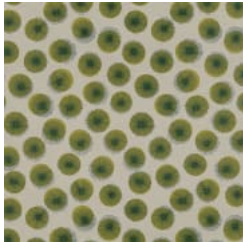
PDO 54 SHORELINE



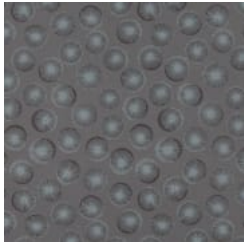
PDO 55 SEAGLASS



PDO 56 DUSK



PDO 57 ENDIVE



PDO 58 MOONBEAM



# PETAL DOTS

**Fabrics** » Vinyl and Faux Leather Fabrics



Petal Dots is a 137cm wide vinyl coated fabric that evokes an organz floral feeling in the design. Available in 9 multicolour colourways.

● **Bleach Cleanable**

● **Moisture Barrier**

Roll Size	137cm x 45.7m - Available by the lineal metre
Composition	Polyurethane (Polycarbonate Resins) with Silicone Surface on a polyester backing
Abrasion	100,000 + double rubs Wyzenbeek
Pattern Repeat Size	51cm V / 34.3cm H
Environmental Info	<p>Greenguard Certifications contributes towards LEED credits for low-emitting furniture.</p> <p>Compliant with Business and Institutional Furniture Manufacturers Association (BIFMA) X7.1 standard and BIFMA e3 credit 7.6.1.</p>
Fire Rating	This product can be treated with a fire retardant that will ensure it meets Australian Standard 1530.3. Contact Baresque for details.

# PETAL DOTS

Fabrics » Vinyl and Faux Leather Fabrics

---

**Warranty** 2-year warranty. Visit [baresque.com.au/warranty](https://baresque.com.au/warranty) for complete details.

---

**Lead Time**

- 2-weeks (approx.) from Wednesday, subject to stock availability.
- Additional 1-week for Western Australia.
- Express delivery is available subject to a surcharge. Contact Baresque for details and pricing.

---

**Care Instructions**

Use cloth with any of the following in preferred order of use:

- 1: Clear warm water
- 2: Mild solution of liquid detergent and warm water
- 3: Isopropyl Alcohol (a.k.a. rubbing alcohol)

Remove any detergent with a clean, damp cloth. Gently pat dry.

For more difficult stains, dampen a soft white cloth with a solution of household bleach (10% bleach / 90% water). Rub gently. Rinse with a water dampened cloth to remove bleach concentration.

Do not use solvent based or concentrated abrasive cleaning agents, lacquer thinners or nail polish remover as these may cause discolouration over a period of time.

Always test in an inconspicuous area first.

If care instructions don't deliver the expected results, cease cleaning method immediately and contact Baresque for assistance.

---

**Additional Comments** Bleach cleanable. Advanced Soil and Stain Resistant Top Coat. Ink resistant.

---