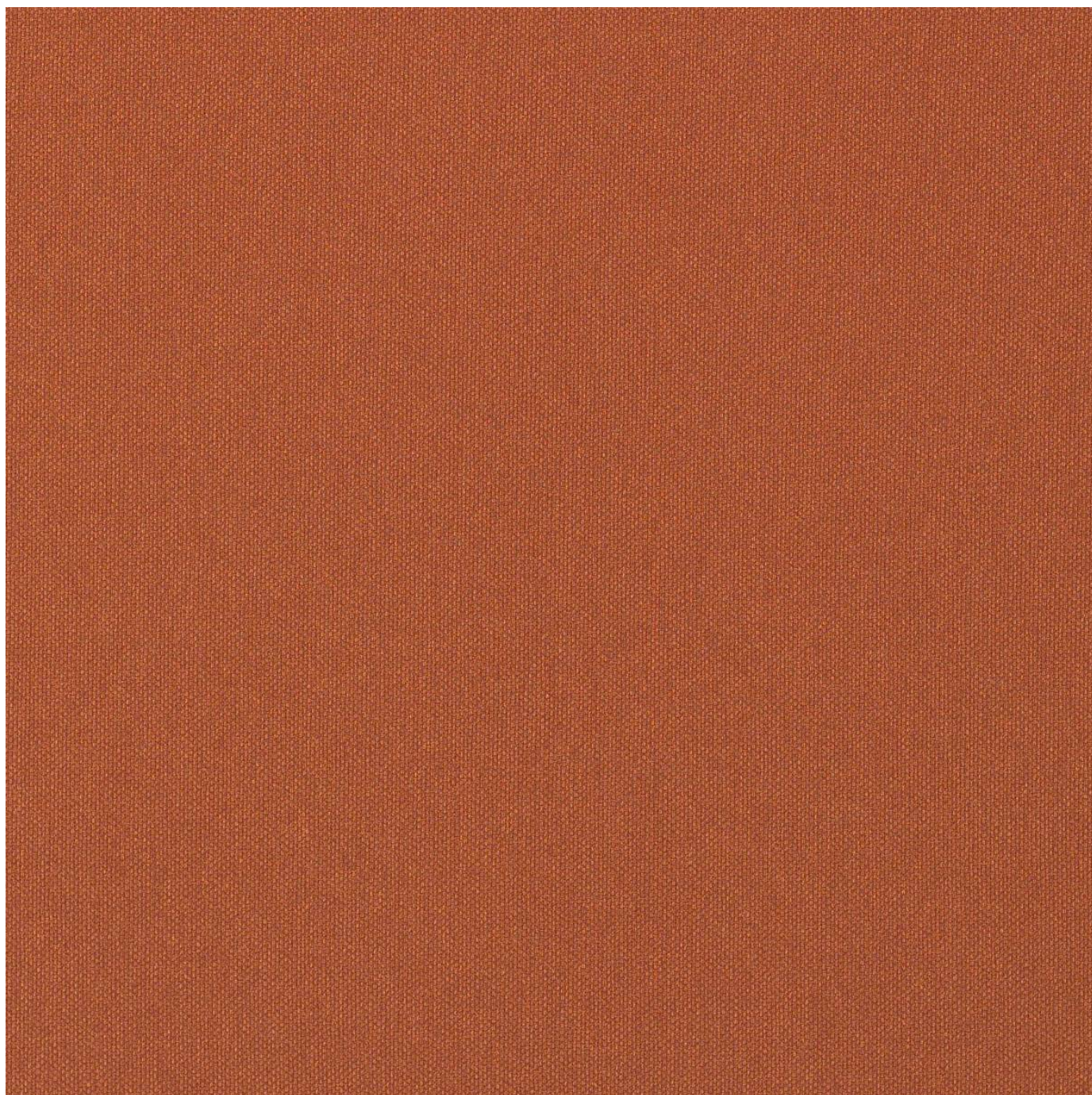


# TESSUTO

**Fabrics** » Vinyl and Faux Leather Fabrics

---



Brand: **CF Stinson**

1300 306 399

[info@baresque.com.au](mailto:info@baresque.com.au)

[baresque.com.au](http://baresque.com.au)

1 of 4



# TESSUTO

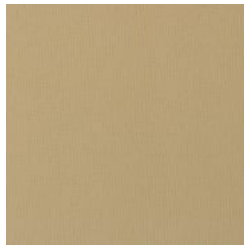
**Fabrics** » Vinyl and Faux Leather Fabrics



TES33 ADRIATIC



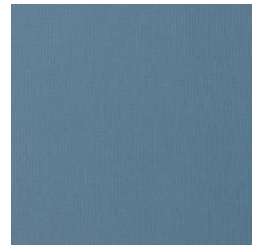
TES23 AMALFI



TES13 BELLINI



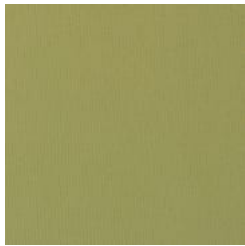
TES11 CANNELLA



TES14 CAPRI



TES21 CHIANTI



TES22 LIME



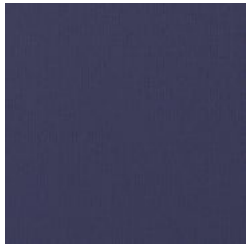
TES31 MAJESTY



TES20 MALTA



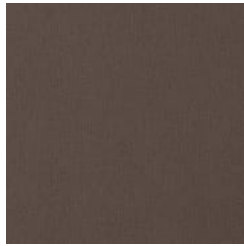
TES19 MARBLE



TES28 MARCO



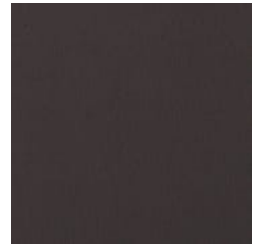
TES25 MINK



TES29 MURANO



TES27 OLIVE



TES34 PALAZZO



TES32 PINEA



TES15 RAFFAELLO



TES17 SENECA



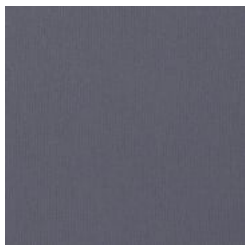
TES30 TRUFFLE



TES16 TUSCAN



TES18 TYRRHENIAN



TES24 VENETO



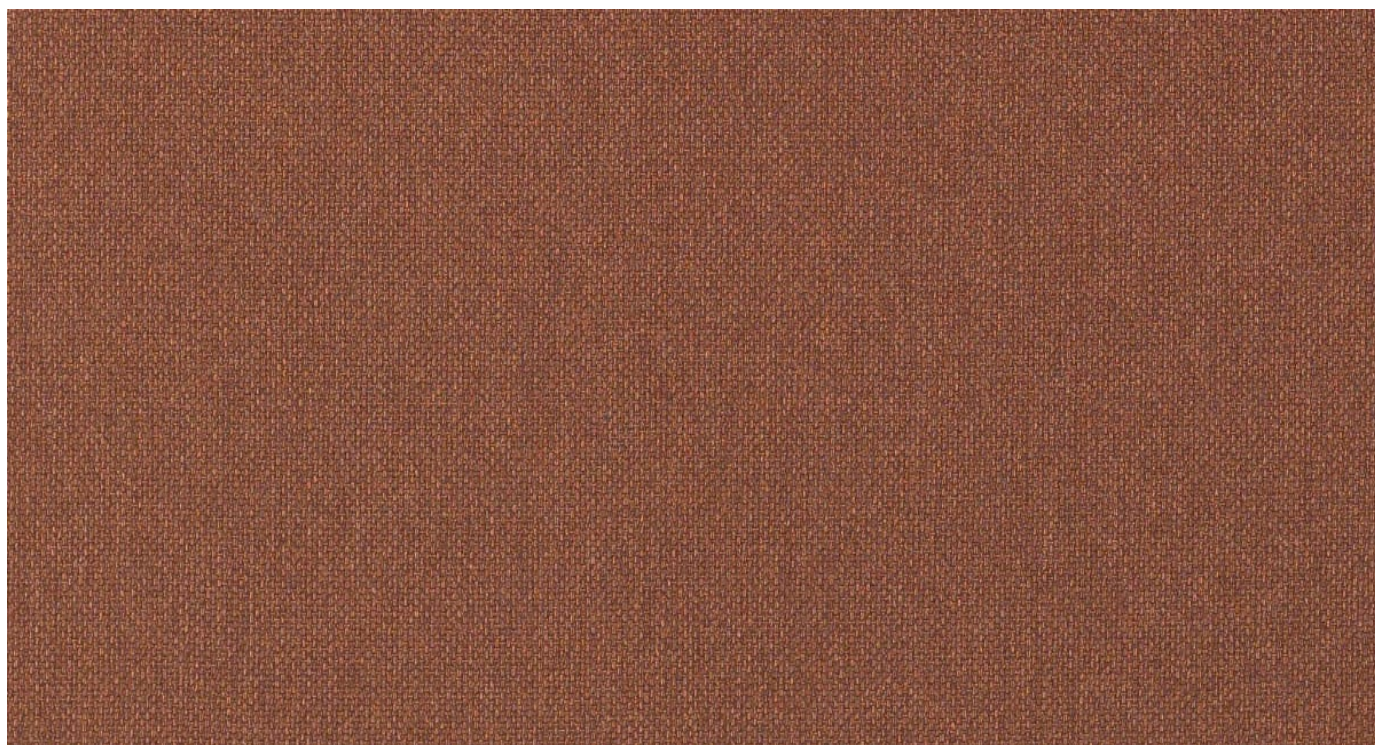
TES12 WINTER



TES26 ZIN

# TESSUTO

Fabrics » Vinyl and Faux Leather Fabrics



Tessuto is a 137cm wide vinyl coated fabric that's available in 24 colours ideal for indoor use. Cleanable with warm water and liquid detergent

● **Bleach Cleanable**

● **Moisture Barrier**

Roll Size	137cm x 27.4m - Available by the lineal metre
-----------	---

Composition	Vinyl face on a knitted polyester fabric backing
-------------	--

Abrasion	100,000 + double rubs Wyzenbeek
----------	---------------------------------

Pattern Repeat Size	N/A
---------------------	-----

Environmental Info	<p>Greenguard Certifications contributes towards LEED credits for low-emitting furniture.</p> <p>Compliant with Business and Institutional Furniture Manufacturers Association (BIFMA) X7.1 standard and BIFMA e3 credit 7.6.1.</p>
--------------------	---

Fire Rating	<p>Tested in accordance with AS1530.3</p> <p>Spread of Flame Index - 0</p> <p>Smoke Developed Index - 5</p>
-------------	---

# TESSUTO

Fabrics » Vinyl and Faux Leather Fabrics

---

**Warranty** 2-year warranty. Visit [baresque.com.au/warranty](https://baresque.com.au/warranty) for complete details.

---

**Lead Time**

- 2-weeks (approx.) from Wednesday, subject to stock availability.
- Additional 1-week for Western Australia.
- Express delivery is available subject to a surcharge. Contact Baresque for details and pricing.

---

**Care Instructions**

Use cloth with any of the following in preferred order of use:

- 1: Clear warm water
- 2: Mild solution of liquid detergent and warm water
- 3: Isopropyl Alcohol (a.k.a. rubbing alcohol)

Remove any detergent with a clean, damp cloth. Gently pat dry.

For more difficult stains, dampen a soft white cloth with a solution of household bleach (10% bleach / 90% water). Rub gently. Rinse with a water dampened cloth to remove bleach concentration.

Do not use solvent based or concentrated abrasive cleaning agents, lacquer thinners or nail polish remover as these may cause discolouration over a period of time.

Always test in an inconspicuous area first.

If care instructions don't deliver the expected results, cease cleaning method immediately and contact Baresque for assistance.

---