

VECTOR AIRE

Fabrics » Vinyl and Faux Leather Fabrics



Brand: **Concertex**

1300 306 399

info@baresque.com.au

baresque.com.au

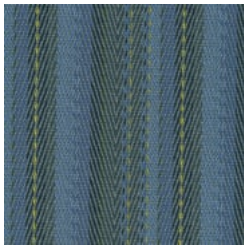
1 of 4

VECTOR AIRE

Fabrics » Vinyl and Faux Leather Fabrics

COLOURWAY CARD

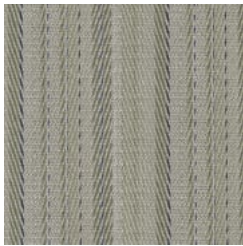
COLOURWAY CARD



AZURE



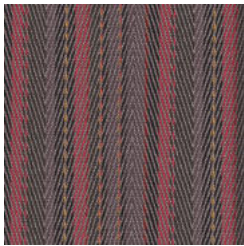
CHARCOAL



PLATINUM



SAND



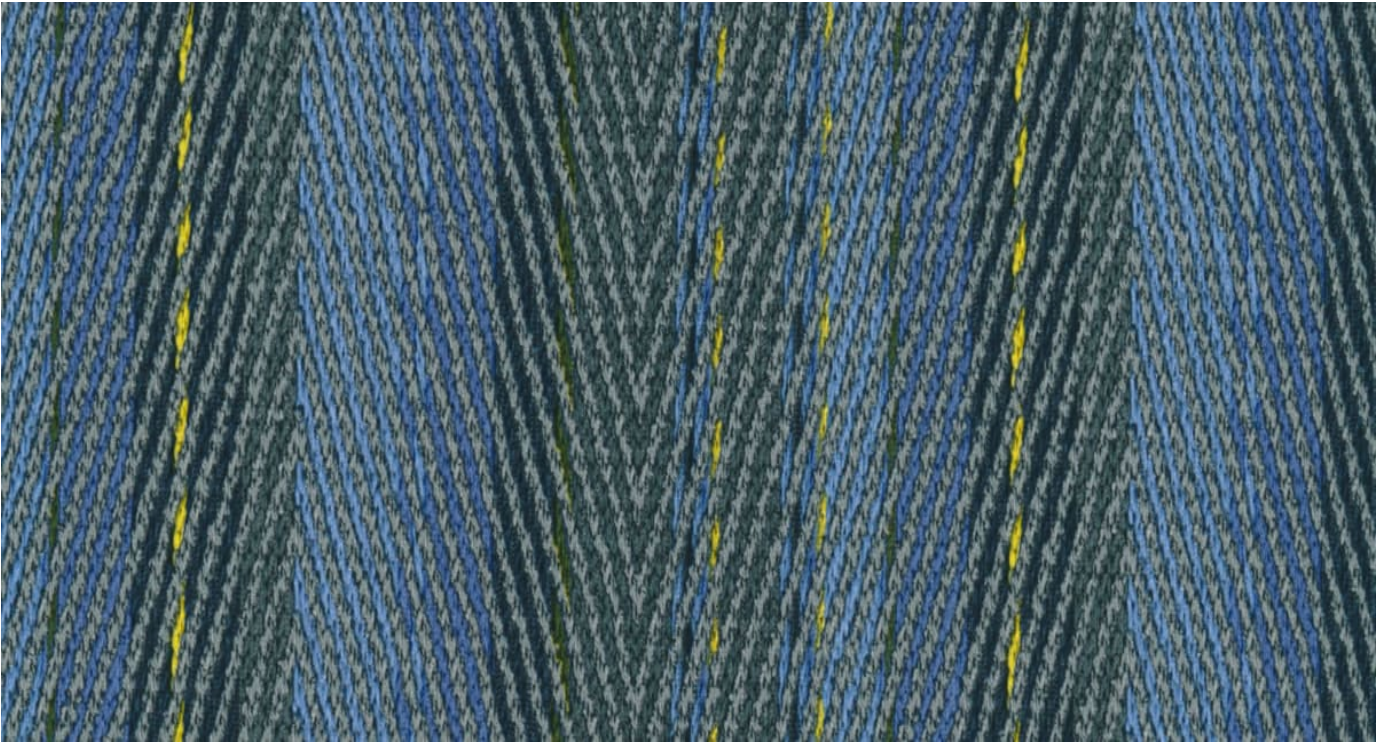
SCARLET



TOFFEE

VECTOR AIRE

Fabrics » Vinyl and Faux Leather Fabrics



Vector-Aire is a 137cm wide silicone hybrid that's ultra-soft and stain resistant coated fabric with a pinstripe pattern available in 6 colours.

- Bleach Cleanable
- Ultra Performance
- Moisture Barrier
- Anti-Bacterial
- Anti-Microbial

Description Aire is a silicone hybrid combining silicone and polyurethane to create an ultra-soft and ink/stain resistant coated fabric. Even with its extremely soft touch and matte surface, the coated fabric is ideal for all applications. Stains can be cleaned with just water and a dry towel. Bleach can also be used.

Roll Size 137cm x 45.7m - Available by the lineal metre

Composition Face - 100% Silicone, Inherently Graffiti-Free Middle - 100% polyurethane Backing - 100% Pollex

Abrasion 200,000 double rubs (Wyzenbeek)

Pattern Repeat Size 12.5cm H

VECTOR AIRE

Fabrics » Vinyl and Faux Leather Fabrics

Environmental Info

PVC free

Phthalate Free

DMF Free

No added fire retardant

Anti-Bacterial

Healthier Hospitals compliant

Complies with CAL01351

Fire Rating

Tested in accordance with AS1530.3

Spread of Flame Index - 0

Smoke Developed Index - 5

Warranty

2-year warranty. Visit baresque.com.au/warranty for complete details.

Lead Time

- 2-weeks (approx.) from Wednesday, subject to stock availability.
 - Additional 1-week for Western Australia.
 - Express delivery is available subject to a surcharge. Contact Baresque for details and pricing.
-

Care Instructions

Wipe material with a clean, soft cloth dampened with a mild solution of liquid detergent and warm water. Repeat using only clean water, then dry with a lint free cloth.

Avoid using wax polishes, solvents or concentrated abrasives. For more difficult stains, dampen a soft white cloth with a solution of household bleach (10% bleach / 90% water). Rub gently. Rinse with a water dampened cloth to remove bleach concentration.

Always test in an inconspicuous area first.

Additional Comments

Naturally breathable for cozy comfortness and luxurious soft touch.
