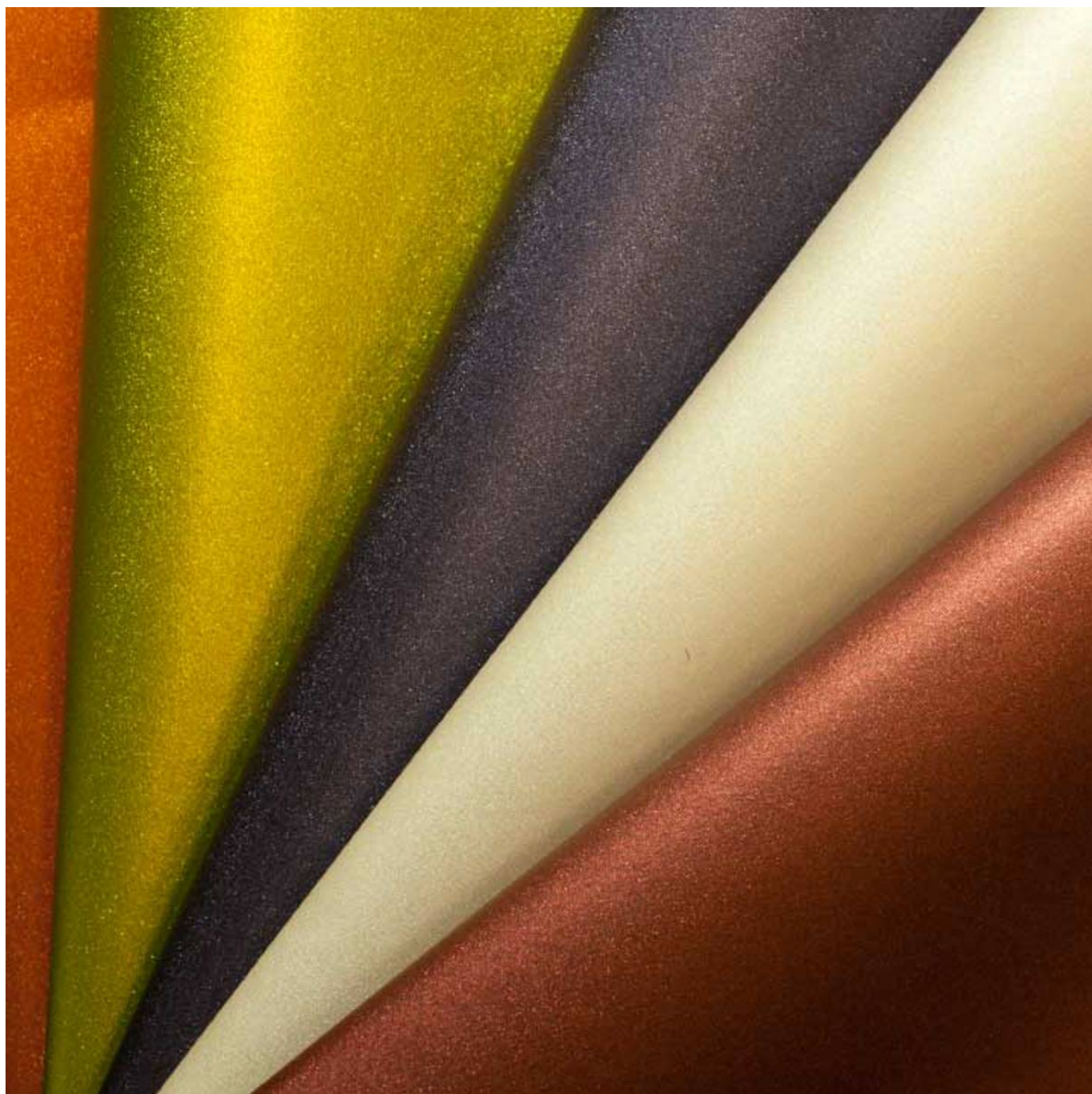


# VITA ZENUS

**Fabrics** » Vinyl and Faux Leather Fabrics

---



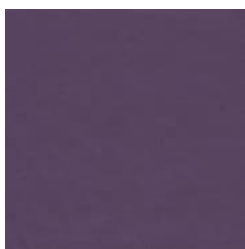
Brand: **Concertex**

# VITA ZENUS

Fabrics » Vinyl and Faux Leather Fabrics

## COLOURWAY CARD

COLOURWAY CARD



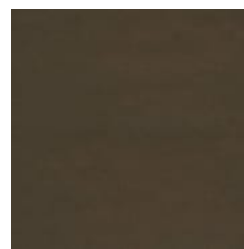
ACAI



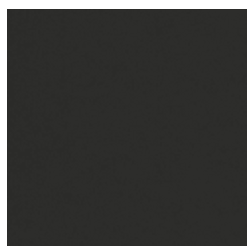
BASALT



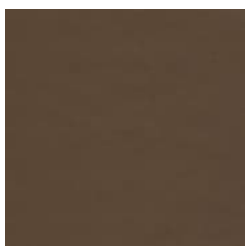
CHARCOAL



DK ESPRESSO



DUSK



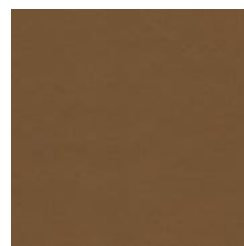
EARL GREY



EGGSHELL



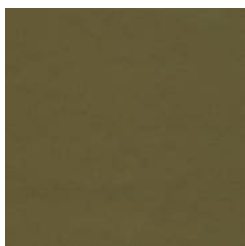
FRESH CUT



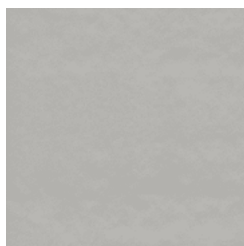
ELK



HONEYCOMB



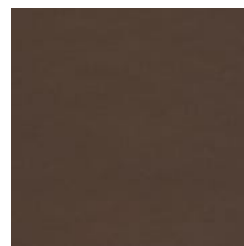
JALAPENO



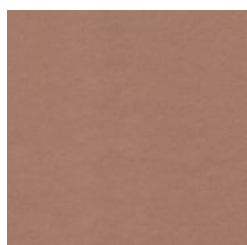
LINEN



MATCHA



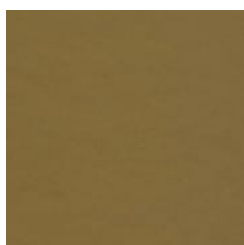
MERLOT



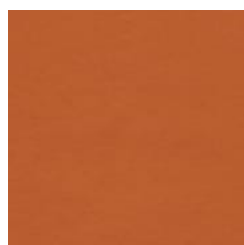
MUDSLIDE



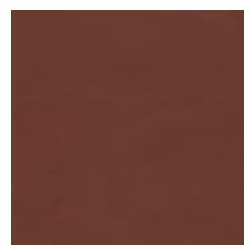
PALLADIUM



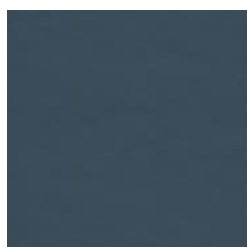
OLIVE GREEN



PERSIMMON



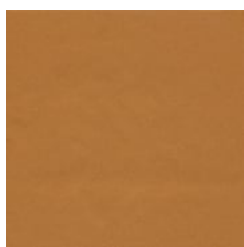
RUBY RED



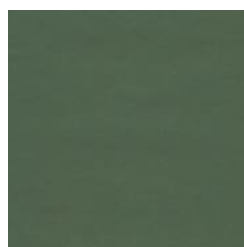
SAPPHIRE



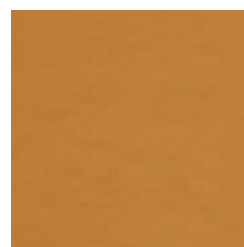
SEA GREEN



SEPIA



TEAL

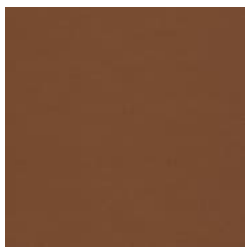


BUTTERSCOTCH

# VITA ZENUS

**Fabrics** » Vinyl and Faux Leather Fabrics

---



CHEERYWOOD

# VITA ZENUS

Fabrics » Vinyl and Faux Leather Fabrics



Vita Zenus is a 137cm wide coated fabric that's available in 25 colours. Stains can be removed with a dry towel and it's bleach cleanable

● Bleach Cleanable	● Moisture Barrier	● Anti-Bacterial
Product Code	FAB.VITA.ZENU	
Roll Size	137cm x 45.7m - Available by the lineal metre	
Composition	100% polyurethane with 100% reinforced pollex backing	
Abrasion	200,000 + double rubs Wyzenbeek	
Pattern Repeat Size	N/A	



# VITA ZENUS

Fabrics » Vinyl and Faux Leather Fabrics

---

## Environmental Info

PVC free  
Phthalate Free  
DMF Free  
No added fire retardant  
Anti-Bacterial  
Healthier Hospitals compliant  
Complies with CAL01351

---

## Warranty

2-year warranty. Visit [baresque.com.au/warranty](https://baresque.com.au/warranty) for complete details.

---

## Lead Time

- 2-weeks (approx.) from Wednesday, subject to stock availability.
  - Additional 1-week for Western Australia.
  - Express delivery is available subject to a surcharge. Contact Baresque for details and pricing.
- 

## Care Instructions

Use cloth with any of the following in preferred order of use:

- 1: Clear warm water
- 2: Mild solution of liquid detergent and warm water
- 3: Isopropyl Alcohol (a.k.a. rubbing alcohol)

Do not use solvent based or concentrated abrasive cleaning agents, lacquer thinners, nail polish remover or cleaning agents containing bleach as these may cause discolouration over a period of time.

Remove any detergent with a clean, damp cloth. Gently pat dry.

Always test in an inconspicuous area first. If care instructions don't deliver the expected results, cease cleaning method immediately and contact Baresque for assistance.

---

## Additional Comments

Colour co-ordinates with Tres

---