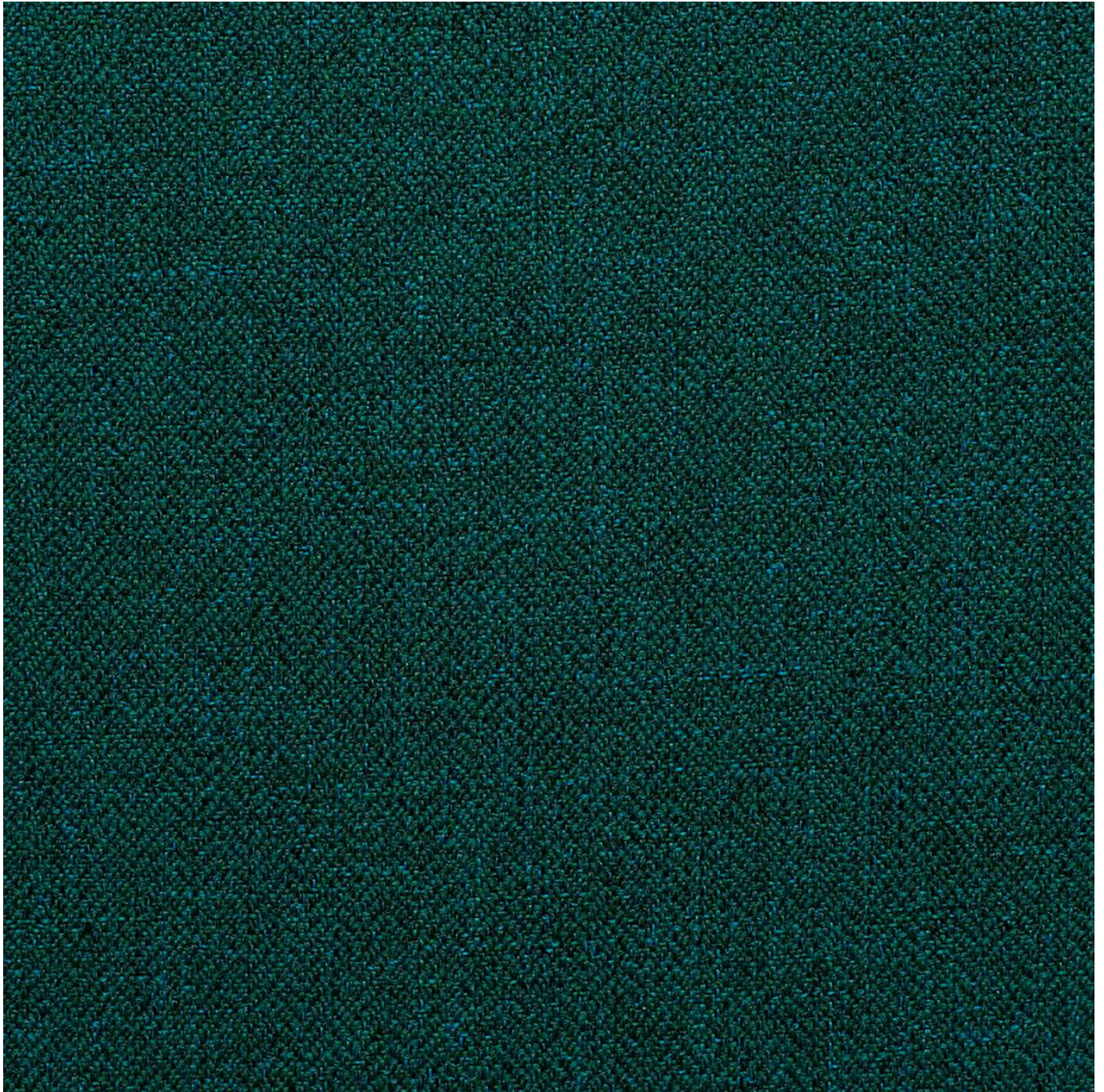


ISLA PORTMAN

Fabrics » Woven Fabrics



Brand: **Panaz**

1300 306 399

info@baresque.com.au

baresque.com.au

1 of 4

ISLA PORTMAN

Fabrics » Woven Fabrics

COLOURWAY CARD

COLOURWAY CARD



116 NAVY



201 JADE



204 MOSS



303 LEMON



400 RED



791 MOCHA



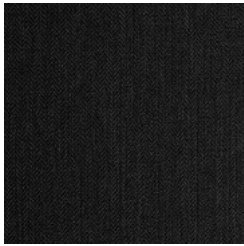
800 BEIGE



804 FAWN



901 SILVER



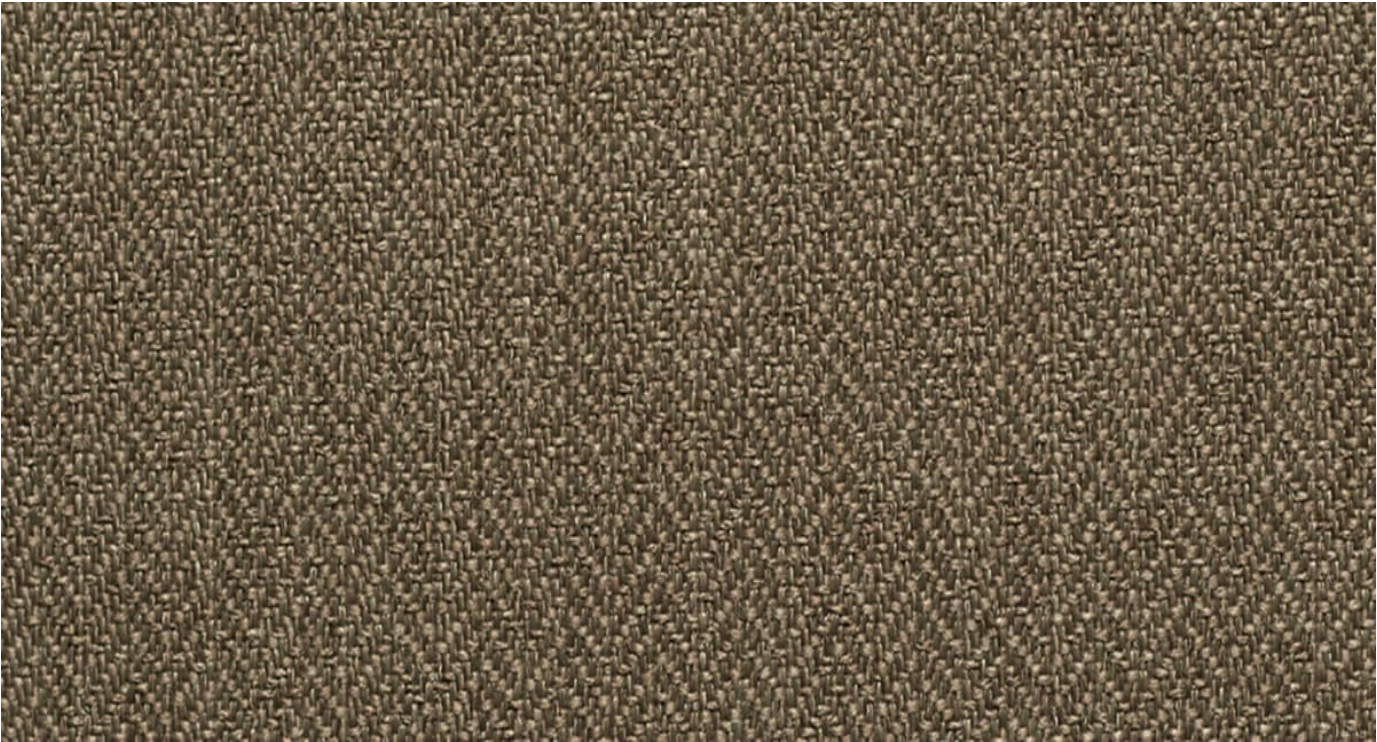
903 CHARCOAL



911 STEEL

ISLA PORTMAN

Fabrics » Woven Fabrics



Isla is a 140cm woven upholstery with a micro herringbone pattern that's available in 11 plain colours. Suitable for indoor.

Description	Portman is a collection of 6 sophisticated designs conveying sartorial elegance and refinement. Including checks of varying scale and a complimentary plain with micro herringbone detail, Portman's colour combinations of stylish greys and charcoal through to classic navy, emerald and heather, evoke a sense of tradition with a hint of the outdoors.
Roll Size	140cm x N/A - Available by the lineal metre. MINIMUM ORDER 4 METRES
Composition	100% polyester
Abrasion	100,000+ rubs Martindale
Pattern Repeat Size	N/A
Fire Rating	This product can be treated with a fire retardant that will ensure it meets Australian Standard 1530.3. Contact Baresque for details.
Warranty	2-year warranty. Visit baresque.com.au/warranty for complete details.

ISLA PORTMAN

Fabrics » Woven Fabrics

Lead Time

- 2-weeks (approx.) from Wednesday, subject to stock availability.
 - Additional 1-week for Western Australia.
 - Express delivery is available subject to a surcharge. Contact Baresque for details and pricing.
-

Care Instructions

Always use a clean, white, soft cloth.

Clean in situ using a damp cloth and mild detergent. Sponge down afterwards with a clean, damp cloth.

Using a cloth to pat dry will help eliminate watermarks.

Ensure the pile is brushed back to its natural direction.

Upholstered furniture should be regularly vacuumed or brushed with a soft nylon brush to remove grit or dust, which may damage the pile.

Never use stiff bristles or wire brushes, as they may damage the fabric.

Always test in an inconspicuous area first. If care instructions don't deliver the expected results, cease cleaning method immediately and contact Baresque for assistance.
