

MURRAY PORTMAN

Fabrics » Woven Fabrics



Brand: **Panaz**

1300 306 399

info@baresque.com.au

baresque.com.au

1 of 4

MURRAY PORTMAN

Fabrics » Woven Fabrics

COLOURWAY CARD

COLOURWAY CARD



188 NAVY/MOCHA



259 MOSS/SILVER



391 LEMON/SILVER



840 BEIGE/RED



851 FAWN/GREY



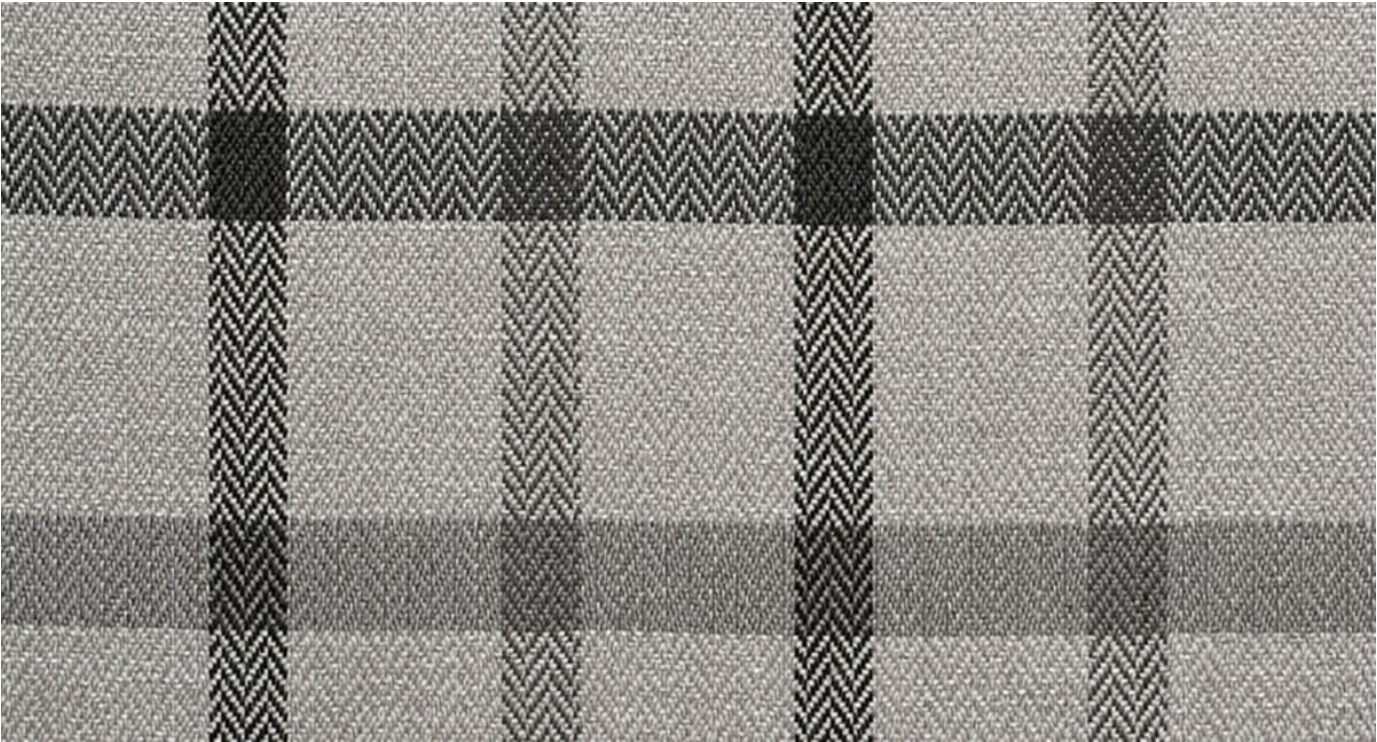
991 SILVER/BLACK



692 HEATHER

MURRAY PORTMAN

Fabrics » Woven Fabrics



Murray is a 140cm wide woven upholstery with a plaid pattern that's available in 7 colourways. Cleanable with warm water and detergent. For indoors.

● **Stain Resistant**

Description	Portman is a collection of 6 sophisticated designs conveying sartorial elegance and refinement. Including checks of varying scale and a complimentary plain with micro herringbone detail, Portman's colour combinations of stylish greys and charcoal through to classic navy, emerald and heather, evoke a sense of tradition with a hint of the outdoors.
Roll Size	140cm x N/A - Available by the lineal metre. MINIMUM ORDER 4 METRES
Weight	380 g/m²
Composition	100% polyester
Abrasion	100,000+ rubs Martindale
Pattern Repeat Size	9.7cm V / 9.3cm H

MURRAY PORTMAN

Fabrics » Woven Fabrics

Fire Rating	This product can be treated with a fire retardant that will ensure it meets Australian Standard 1530.3. Contact Baresque for details.
Warranty	2-year warranty. Visit baresque.com.au/warranty for complete details.
Lead Time	<ul style="list-style-type: none">• 2-weeks (approx.) from Wednesday, subject to stock availability.• Additional 1-week for Western Australia.• Express delivery is available subject to a surcharge. Contact Baresque for details and pricing.
Care Instructions	<p>Always use a clean, white, soft cloth.</p> <p>Clean in situ using a damp cloth and mild detergent. Sponge down afterwards with a clean, damp cloth.</p> <p>Using a cloth to pat dry will help eliminate watermarks.</p> <p>Ensure the pile is brushed back to its natural direction.</p> <p>Upholstered furniture should be regularly vacuumed or brushed with a soft nylon brush to remove grit or dust, which may damage the pile.</p> <p>Never use stiff bristles or wire brushes, as they may damage the fabric.</p> <p>Always test in an inconspicuous area first. If care instructions don't deliver the expected results, cease cleaning method immediately and contact Baresque for assistance.</p>