

# PIVOT

Fabrics » Woven Fabrics

---



Brand: **Crypton**

# PIVOT

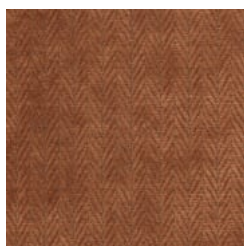
Fabrics » Woven Fabrics



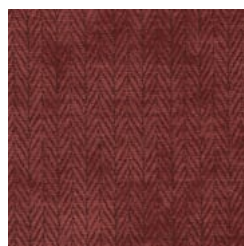
COLOURWAY CARD



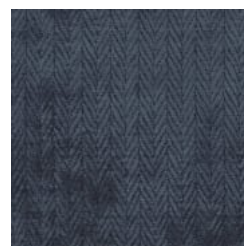
1011021 MAIZE



1011022 SPICED



1011023 SANGRIA



1011024 NAUTICA



1011025 AEGEAN



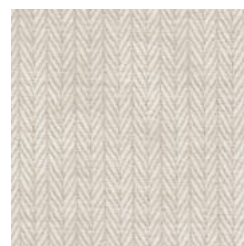
1011026 EVERGREEN



1011027 WILLOW



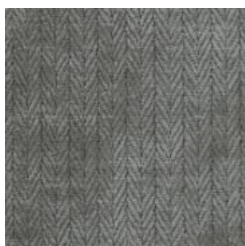
1011028 ECRU



1011029 MERINGUE



1011030 SUEDE



1011031 GUNMETAL



# PIVOT

Fabrics » Woven Fabrics



Pivot is a 137cm wide woven upholstery with a small scale chevron pattern in a range of 11 colourways. Suitable for indoor

Description	Pivot delivers a small scale chevron in a range of contemporary neutrals to muted highlight colours. CRYPTON is a permanent moisture, soil resistance and anti-microbial protection backing.
Roll Size	137cm x Approx 55m - Available by the lineal metre
Composition	CRYPTON - 53% polyester / 40% acrylic / 7% viscose
Abrasion	50,000+ Double Rubs (Wyzenbeek)
Pattern Repeat Size	2.5cm V / 36cm H
Fire Rating	This product can be treated with a fire retardant that will ensure it meets Australian Standard 1530.3. Contact Baresque for details.
Warranty	2-year warranty. Visit <a href="https://baresque.com.au/warranty">baresque.com.au/warranty</a> for complete details.

# PIVOT

Fabrics » Woven Fabrics

---

## Lead Time

- 2-weeks (approx.) from Wednesday, subject to stock availability.
  - Additional 1-week for Western Australia.
  - Express delivery is available subject to a surcharge. Contact Baresque for details and pricing.
- 

## Care Instructions

Mix 5 parts water with 1 part of an enzyme laundry detergent to have a mixture that works well on all stains.

Most liquid spills simply blot off the surface with a dry towel. If a stain remains, follow these simple steps:

1. Remove excess soil, and apply the soap mixture on the stained area
2. Allow solution to remain on stain for 1 minute
3. Blot up the stain with a dry, clean towel, rinse any remaining soap and blot the area again

Repeat these steps if a spot still remains. If agitation is necessary, spray the stained area and work the stain using a soft brush or edge of spoon from outside of spot toward the middle. Blot and rinse to remove any soap.

---