

ABSTRACT

Wallcoverings » Architectural Film



Brand: **Reatec**

1300 306 399

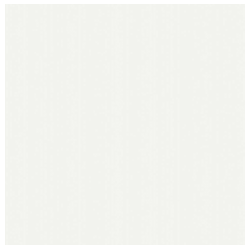
info@baresque.com.au

baresque.com.au

1 of 5

ABSTRACT

Wallcoverings » Architectural Film



TC4441



TC4442



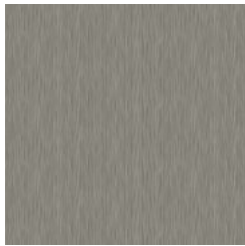
TC4443



TC4444



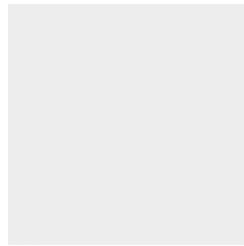
TC4445



TC4446



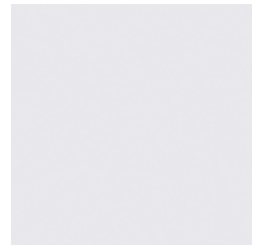
TC4447



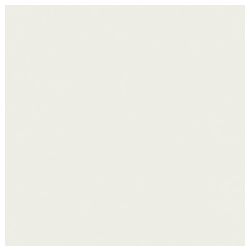
TC4448



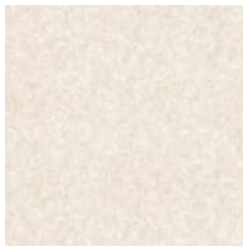
TC4451



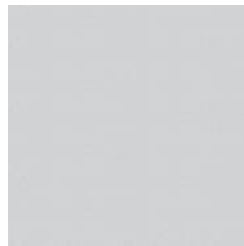
TC4567



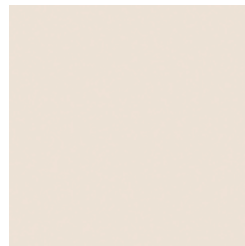
TC4568



TC4569



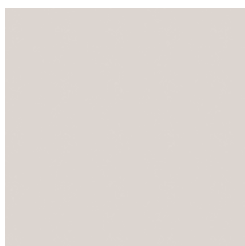
TC4571



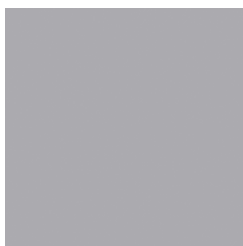
TC4572



TC4573



TC4574



TC4575



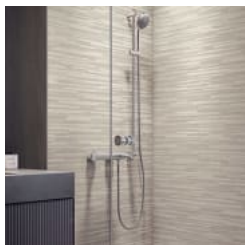
TC4576



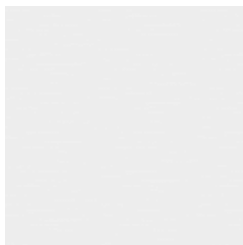
TC5167



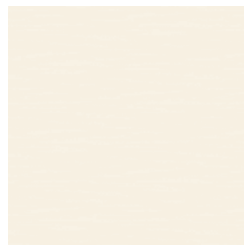
TC5555



TC5556



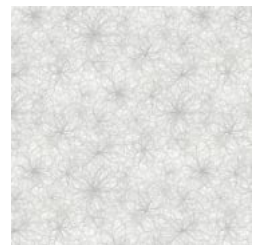
TD4561



TD4562



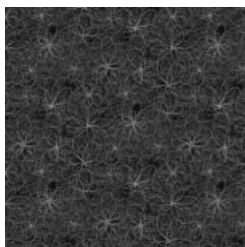
TD5218



TR4563

ABSTRACT

Wallcoverings » Architectural Film



TR4564

ABSTRACT

Wallcoverings » Architectural Film



A mixture of neutral abstract design's ready to inspire your next project.

Bleach Cleanable

Description	Reatec is a durable and realistic architectural film with a pressure sensitive adhesive and air removal system backing. Utilising state of the art, multi layer printing and minute embossing, its appearance is almost indistinguishable from real wood or stone. Reatec is stain and solvent/chemical resistant, anti-bacterial, anti-mould, colorfast, washable, scrubbable, and abrasion resistant. A pdf with full Reatec Test Results can be found on the product Downloads tab on the website. Reatec can be stretched to cover the corners and curves and is suitable for both indoor and outdoor uses including kitchens and bathrooms. Go to the DOWNLOADS tab for our Reatec Additional Spec Sheet and Installation Guide.
Roll Size	122cm wide x 50m - Available by the lineal metre
Composition	Reatec is a durable and realistic architectural film with a pressure sensitive adhesive and air removal system backing 350 g/m ²
Pattern Repeat Size	N/A

ABSTRACT

Wallcoverings » Architectural Film

Fire Rating	<p>Tested in accordance with AS ISO 9705 2003 for the purpose of determining the Group Number classification required by the Building Code of Australia for the control of fire spread on interior wall and ceiling linings.</p> <p>Classification - Group 1 Specific Extinction - Less than 250m²/kg</p>
Warranty	<p>2-year warranty. Visit baresque.com.au/warranty for complete details.</p>
Lead Time	<ul style="list-style-type: none">• 2-weeks (approx.) from Wednesday, subject to stock availability.• Additional 1-week for Western Australia.• Express delivery is available subject to a surcharge. Contact Baresque for details and pricing.
Suggested Installation	<p>Reatec is a specialised product and should only be installed by a trained installer.</p> <p>It is strongly recommended that the installation instructions from our product downloads are read and understood.</p> <p>As Reatec is a thin film, the substrate should be prepared as smooth as possible to avoid visible unevenness.</p> <p>Reatec can be installed and repaired on-site, resulting in almost no downtime for both interior and exterior applications.</p> <p>Feel free to contact Baresque with any installation questions.</p>
Care Instructions	<p>Wipe material with a clean, soft cloth dampened with a mild solution of liquid detergent and warm water. Repeat using only clean water, then dry with a lint free cloth.</p> <p>Avoid using wax polishes, solvents or concentrated abrasives.</p> <p>For more difficult stains, dampen a soft white cloth with a solution of household bleach (10% bleach / 90% water). Rub gently. Rinse with a water dampened cloth to remove bleach concentration.</p> <p>Always test in an inconspicuous area first. If care instructions don't deliver the expected results, cease cleaning method immediately and contact Baresque for assistance.</p>
