

# LOMBARD

Wallcoverings » Commercial Wallcoverings



Brand: **Versa**

# LOMBARD

Wallcoverings » Commercial Wallcoverings



A132-011  
GHIRARDELLI



A132-127 PORTERO  
AVE



A132-153 MISSION ST



A132-194 RINCON  
HILL



A132-199 TARAVAL



A132-200 PRESIDIO  
BLVD



A132-320 MARINA  
BLVD



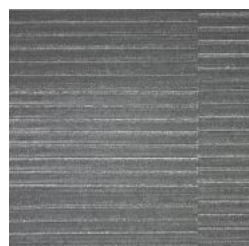
A132-345 NOB HILL



A132-383 GEARY BLVD



A132-473 CHINATOWN



A132-567 PORTOLA



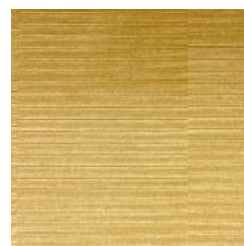
A132-570 JACKSON  
SQ



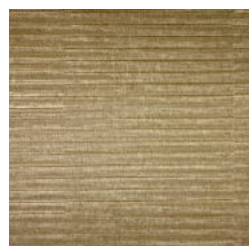
A132-584 BALBOA ST



A132-661  
EMBARCADERO



A132-712 CALIFORNIA  
ST



A132-855 VAN NESS  
AVE



A132-868 BAY ST

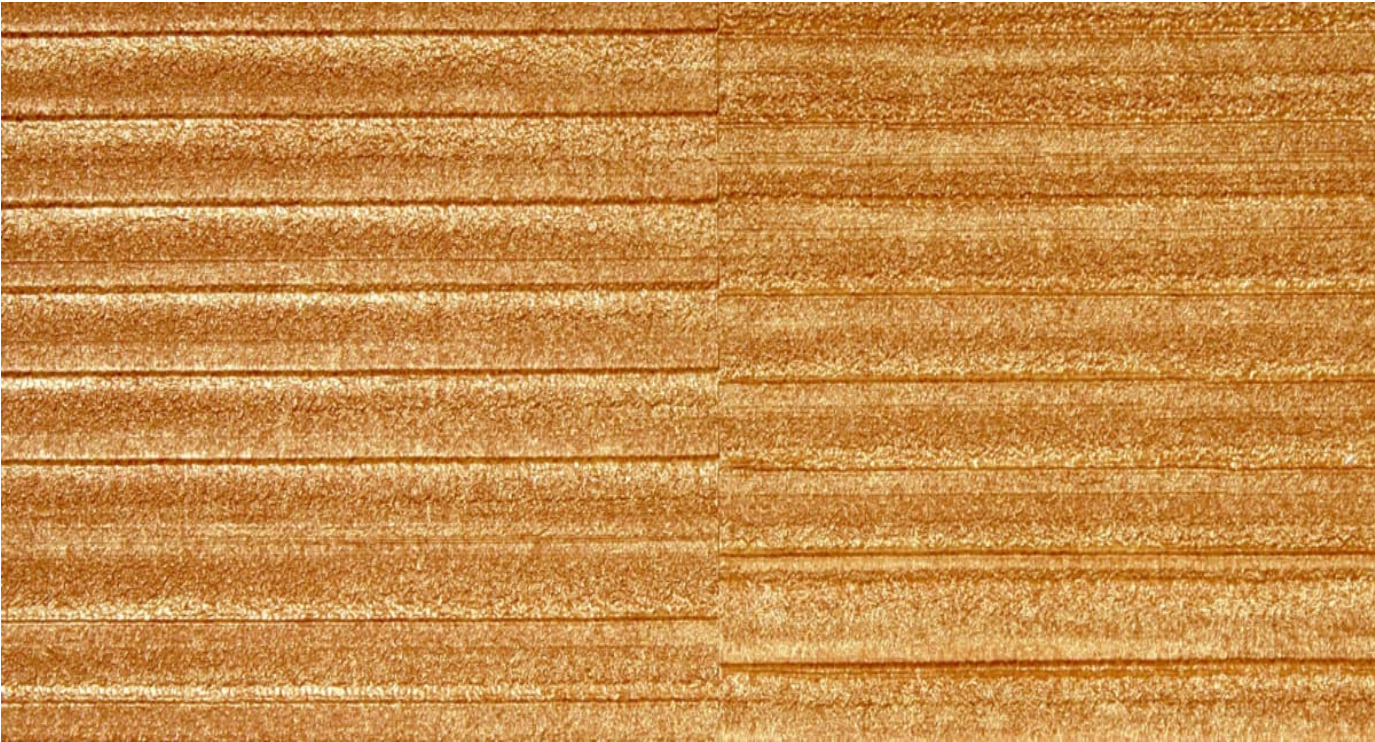


A132-891 PACIFIC  
HEIGHTS



# LOMBARD

Wallcoverings » Commercial Wallcoverings



Lombard is a 137cm wide commercial wallcovering with textured stripes that's available in 6 colourways. It's versatile, durable, and easy to clean.

● Bleach Cleanable	● EPD Certified	● HPD Certified
Description	Stripes of texture that enriches the ambient	
Roll Size	137cm wide x 27.4m - Available by the lineal metre	
Composition	Vinyl face on a fabric backing Equivalent to 20oz (452 g/m²)	
Pattern Repeat Size	N/A	

# LOMBARD

Wallcoverings » Commercial Wallcoverings

---

## Environmental Info

Formaldehyde free

Heavy metals free

Perfluorooctanoic acid free

No solvent inks

Low VOC emissions. Any VOCs dissipate quickly (faster than paint) through normal ventilation and have no recognized adverse impact on indoor air quality.

Durability means products do not need to be replaced regularly due to wear and tear and being cleanable, vinyl products are ideal for helping keep commercial environments clean of bacteria.

Baresque will only deal with vinyl manufacturers that comply with applicable state and federal regulations, provide a factory that is safe and clean for its employees to work in, recycle scrap and inks during the manufacturing process to minimize waste related to production.

---

## Fire Rating

Tested in accordance with AS ISO 9705 2003 for the purpose of determining the Group Number classification as required by the Building Code of Australia for the control of fire spread on interior wall and ceiling linings.

The result achieved was:

Classification - Group 2

Specific Extinction - Less than 250m<sup>2</sup>/kg

---

## Warranty

5-year warranty. Visit [baresque.com.au/warranty](https://baresque.com.au/warranty) for complete details.

---

## Lead Time

- 2-weeks (approx.) from Wednesday, subject to stock availability.
  - Additional 1-week for Western Australia.
  - Express delivery is available subject to a surcharge. Contact Baresque for details and pricing.
- 

## Suggested Installation

Reverse hang / overlap and double cut.

Baresque recommends and supply Roman brand adhesives and primers.

---

# LOMBARD

Wallcoverings » Commercial Wallcoverings

---

## Care Instructions

Always use a clean, white, soft cloth.

Use cloth with any of the following in preferred order of us:

1: Clear warm water

2: Mild solution of liquid detergent and warm water

3: Isopropyl Alcohol (a.k.a. rubbing alcohol)

Remove any detergent with a clean, damp cloth. Gently pat dry.

For more difficult stains, dampen a soft white cloth with a solution of household bleach (10% bleach / 90% water). Rub gently.

Rinse with a water dampened cloth to remove bleach concentration.

DO NOT USE solvent based or concentrated abrasive cleaning agents, lacquer thinners, nail polish remover as these may cause discolouration over a period of time.

Always test in an inconspicuous area first. If care instructions don't deliver the expected results, cease cleaning method immediately and contact Baresque for assistance.

---