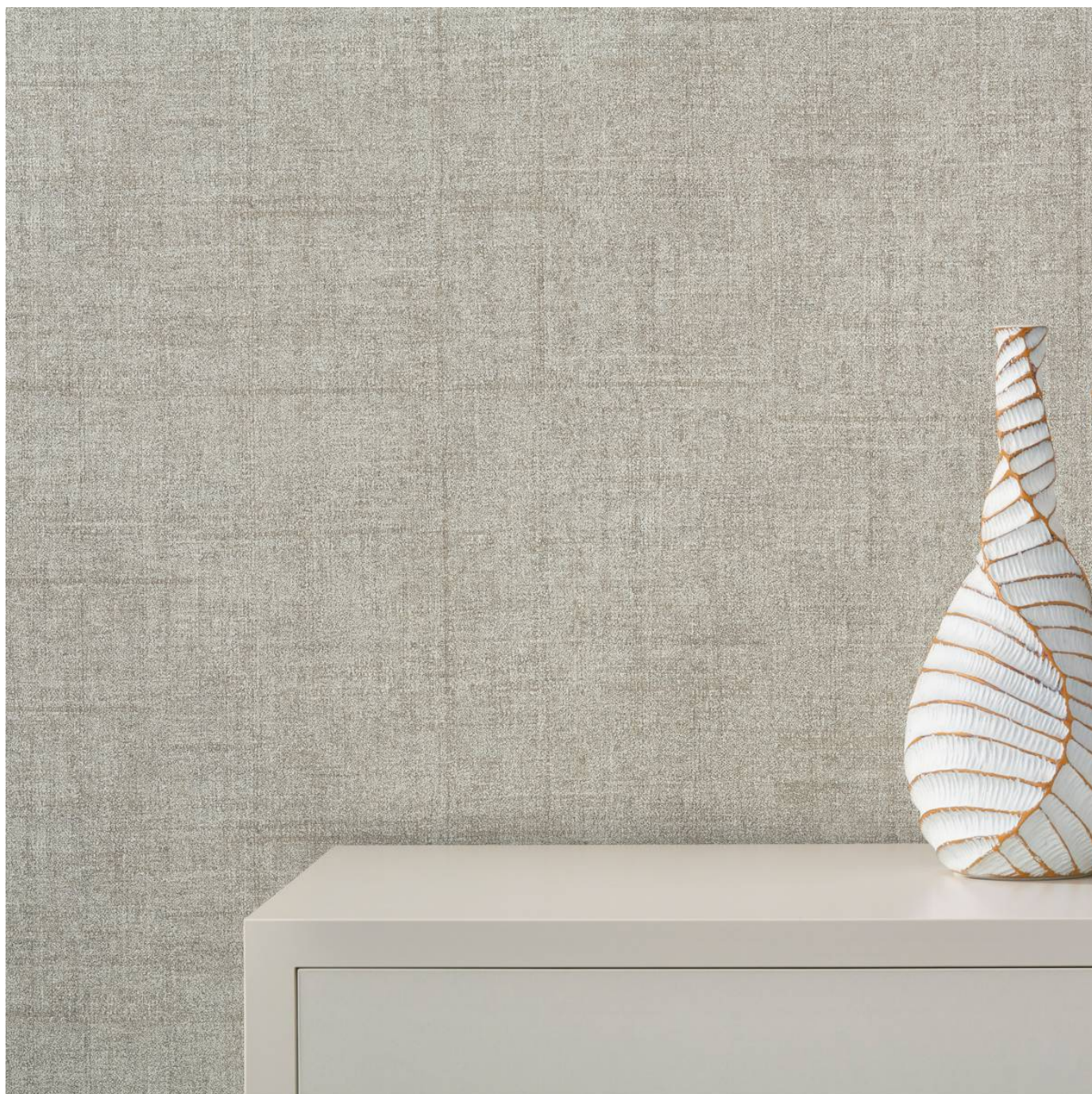


WICKED

Wallcoverings » Commercial Wallcoverings



Brand: **Bolta**

1300 306 399

info@baresque.com.au

baresque.com.au

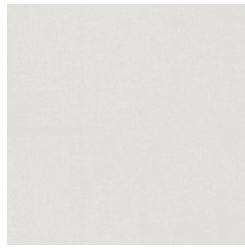
1 of 5

WICKED

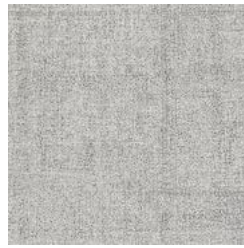
Wallcoverings » Commercial Wallcoverings

COLOURWAY CARD

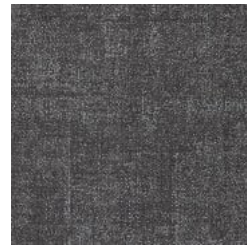
COLOURWAY CARD



BB-WD-01 GOOD
WHITE-CH



BB-WD-02 TIN MAN



BB-WD-03 NIGHT
BIRCH



BB-WD-04 DANDY
LION



BB-WD-05 BLACK
OAK



BB-WD-06 DEFY
GREY-VITY



BB-WD-07 KANSAS
CREAM



BB-WD-08 TOTO-
AUPE



BB-WD-09 POPULAR
PUTTY



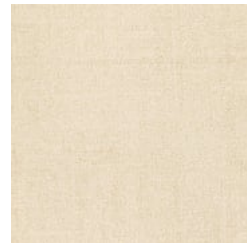
BB-WD-10 LINEN



BB-WD-11 BICYCLE
BASKET



BB-WD-12 TRIUMPH
TAUPE



BB-WD-13 FULL OF
BUFFIN'



BB-WD-14 LIME-ON
DROPS



BB-WD-15 ELPHABA
VERT



BB-WD-16 OZ DUST



BB-WD-17 WICKED
TEAL



BB-WD-18 VIRIDIAN



BB-WD-19 SKIES R
BLUE



BB-WD-20 BLUEBIRDS



BB-WD-21
MOONLIGHT



BB-WD-22
RAINDROPS



BB-WD-23 LOLLY
PURPLE



BB-WD-24
SWANKIFIED

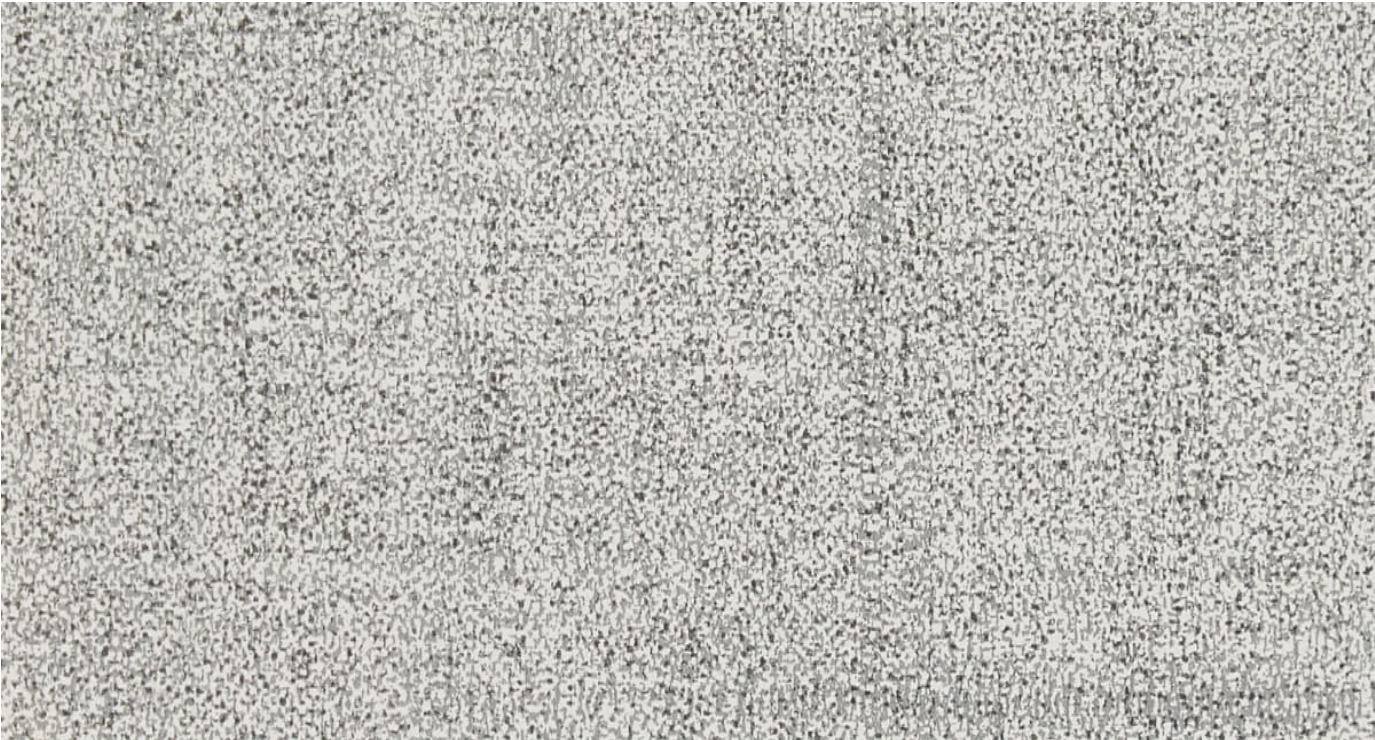
1300 306 399

info@baresque.com.au

baresque.com.au

WICKED

Wallcoverings » Commercial Wallcoverings



Wicked is a 137cm wide commercial wallcovering with a woven like texture that's available in 24 colourways. Versatile, durable, and cost effective.

● Bleach Cleanable

Roll Size	137cm wide x 27.4m - Available by the lineal metre
Composition	Vinyl face on a fabric backing 20oz (452 g/m ²)
Pattern Repeat Size	N/A

Environmental Info

Formaldehyde free

Heavy metals free

Perfluorooctanoic acid free

No solvent inks

Low VOC emissions. Any VOCs dissipate quickly (faster than paint) through normal ventilation and have no recognized adverse impact on indoor air quality.

Durability means products do not need to be replaced regularly due to wear and tear and being cleanable, vinyl products are ideal for helping keep commercial environments clean of bacteria.

Baresque will only deal with vinyl manufacturers that comply with applicable state and federal regulations, provide a factory that is safe and clean for its employees to work in, recycle scrap and inks during the manufacturing process to minimize waste related to production.

Fire Rating

Tested in accordance with AS ISO 9705 2003 for the purpose of determining the Group Number classification as required by the Building Code of Australia for the control of fire spread on interior wall and ceiling linings.

The result achieved was:

Classification - Group 2

Specific Extinction - Less than 250m²/kg

Warranty

5-year warranty. Visit baresque.com.au/warranty for complete details.

Lead Time

- 2-weeks (approx.) from Wednesday, subject to stock availability.
 - Additional 1-week for Western Australia.
 - Express delivery is available subject to a surcharge. Contact Baresque for details and pricing.
-

Suggested Installation

Reverse hang / overlap and double cut.

Baresque recommends and supply Roman brand adhesives and primers.

Care Instructions

Use cloth with any of the following in preferred order of use:

- 1: Clear warm water
- 2: Mild solution of liquid detergent and warm water
- 3: Isopropyl Alcohol (a.k.a. rubbing alcohol)

Remove any detergent with a clean, damp cloth. Gently pat dry.

For more difficult stains, dampen a soft white cloth with a solution of household bleach (10% bleach / 90% water). Rub gently.

Rinse with a water dampened cloth to remove bleach concentration.

Do not use solvent based or concentrated abrasive cleaning agents, lacquer thinners or nail polish remover as these may cause discolouration over a period of time.

Always test in an inconspicuous area first.

If care instructions don't deliver the expected results, cease cleaning method immediately and contact Baresque for assistance.
