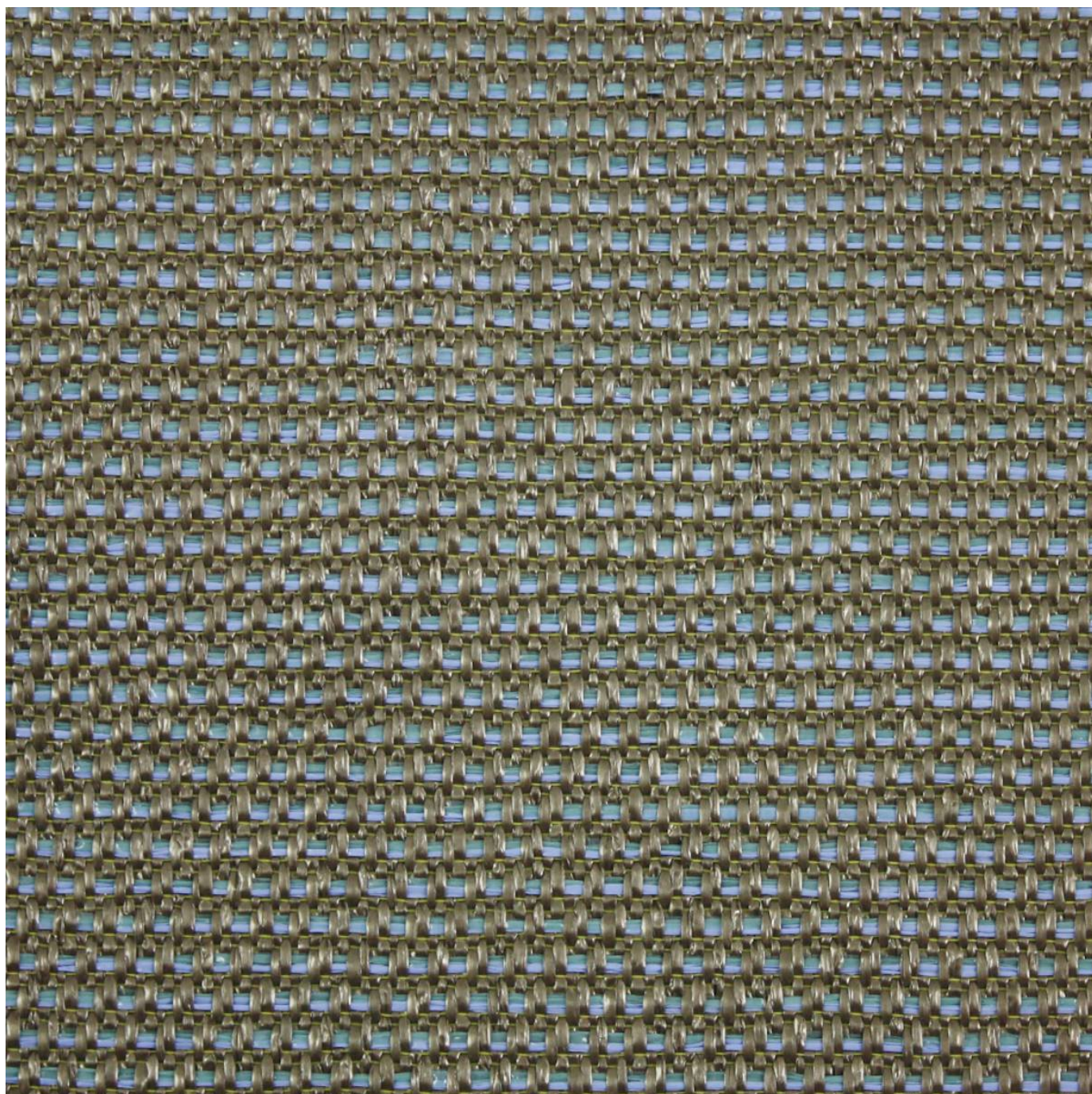


REEF

Wallcoverings » Commercial Wallcoverings



Brand: **Xorel**

1300 306 399

info@baresque.com.au

baresque.com.au

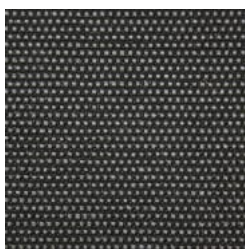
1 of 5

REEF

Wallcoverings » Commercial Wallcoverings



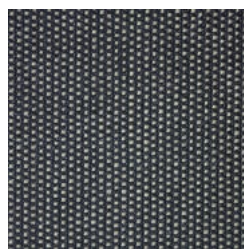
6627 71



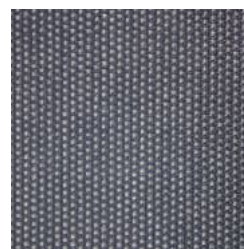
6627 73



6627 75



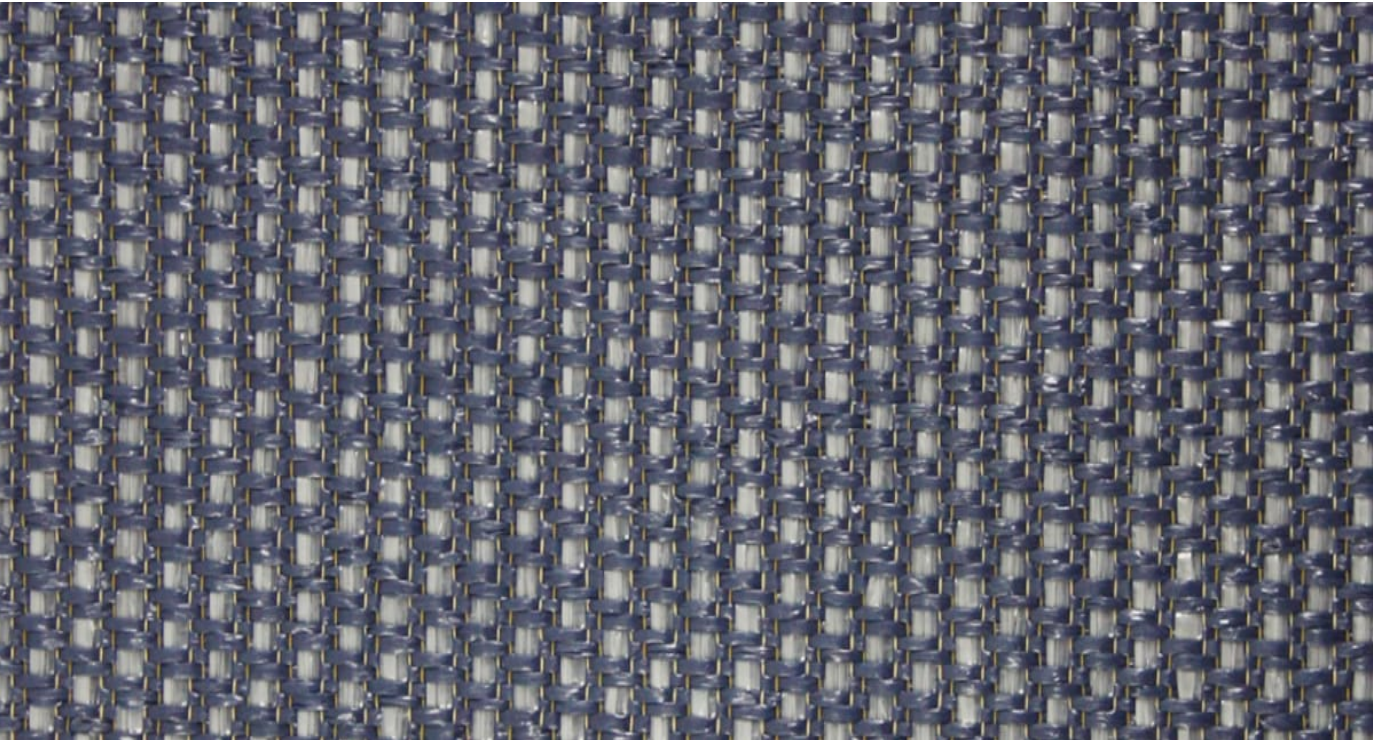
6627 76



6627 77

REEF

Wallcoverings » Commercial Wallcoverings



Reef is a minimal yet textural option for any panel application. It's durable, anti-microbial and bleach cleanable. Available in 5 plain colours.

- Bleach Cleanable
- High Stain Resistance
- Solution Dyed Yarns
- Environmentally Friendly
- Phthalate Free
- Ultra Performance
- Extended Warranty
- PVC-Free

Description

Xorel is a technologically advanced and environmentally sound problem solving woven textile which enables a wide range of design possibilities to be realized. All the high performance characteristics of Xorel emanate from the yarn. Simply put, nothing is added to the woven product to enhance performance; no finishes, no coatings. FEATURES + BENEFITS: * Bleach cleanable, anti-microbial * 7 Year Warranty * Super durable - 1,000,000 + double rubs * Multi-tasking Xorel is a registered trademark and license to distribute is granted by permission of Carnegie Fabrics Inc. USA

Roll Size

Unbacked - 142cm

X-Protect Wall - 132cm

X-Protect Sit - 137cm

Acrylic Backed - 137cm x Approx 60m - available by the lineal metre.

MINIMUM ORDER for X-Protect Sit - 5 lineal metres

MINIMUM ORDER for Acrylic Backed - 15 lineal metres

REEF

Wallcoverings » Commercial Wallcoverings

Composition	100% Xorel. Available Unbacked (for wrapped panels) or with X-Protect Sit (for upholstery) or acrylic (for wrapped panels with glue) backings. Reef is not available as a Wallcovering.
Abrasion	1,000,000 + double rubs Wyzenbeek
Pattern Repeat Size	N/A
Environmental Info	<p>Xorel's high performance does not come at an environmental cost as it achieves high standards for sustainability.</p> <p>All testing/certifying is done by third party independent organizations including:- Scientific Certification Systems (SCS) – Indoor Air Quality (GOLD)- Vincotte – Biobased Content (LEVELS 3/4)- USDA Biobased – Meeting Government Biobased Regulations (PREFERRED)- Cradle to Cradle Institute – Full Lifecycle Assessment (GOLD)- NSF – FACTS certification (NSF 336)</p> <p>Xorel products can also help a project achieve multiple credits under LEED for commercial interiors:Material Sourcing (Rapidly Renewable Content)Indoor Air Quality (SCS Indoor Advantage Gold)Material Optimization (Cradle to Cradle Gold)Material Transparency (Healthy Product Declaration)</p>
Fire Rating	<p>Tested in accordance with AS1530.3</p> <p>Spread of Flame Index - 0</p> <p>Smoke Developed Index - 4</p>
Warranty	7-year warranty. Visit baresque.com.au/warranty for complete details.
Lead Time	<ul style="list-style-type: none">• 5-weeks (approx) from Wednesday subject to stock availability.• Additional 1-week for Western Australia.• Unbacked 2-3 weeks.• Express delivery is available subject to a surcharge. Contact Baresque for details and pricing
Suggested Installation	<p>As a wallcovering - trim selvedge and butt join.</p> <p>Download the Installation Instructions for details.</p> <p>Baresque recommends and supply Roman brand adhesives and primers.</p>

REEF

Wallcoverings » Commercial Wallcoverings

How to Specify

1. Colour 2. Backing - Available Unbacked or with X-Protect Sit or Acrylic backings. Check out the Xorel Backings guide on the DOWNLOAD tab.

Care Instructions

Xorel yarns are non-absorbent; dust and stains cannot penetrate them.

Regular maintenance will keep the fabric looking new for many years. Periodic vacuuming will remove dust that may settle between the yarns.

Most stains that dry between the yarns or on the surface can be eliminated by wiping the fabric with a cloth moistened with hot tap water. Some stains may require additional treatment. These stains can be cleaned with a variety of water or solvent based cleaners.

When using solvent based cleaners on paperbacked Xorel fabric, test on a small area first. Residue from these cleaners must be removed with hot water and a clean sponge. After cleaning, towel dry.

Hardened solids can be removed with stiff brush or a sharp-edged instrument without damaging the fabric. However, the brush or sharp instrument should not be used close to seams.

Hospital grade disinfectant cleaners can be safely used on Xorel fabrics. Always follow the directions for the specific brand being used as contact times may vary depending on the product. Diluted bleach solution (up to 40%) can also be used on Xorel for disinfecting purposes.

Always test in an inconspicuous area first. If care instructions don't deliver the expected results, cease cleaning method immediately and contact Baresque for assistance.

Additional Comments

Xorel is notable for its versatility in a wide range of projects; wherever both beauty and performance are required. X Protect Sit increases cushion protection and enhances Xorel's superior performance attributes. With X Protect, Xorel is 100% moisture repellent.
