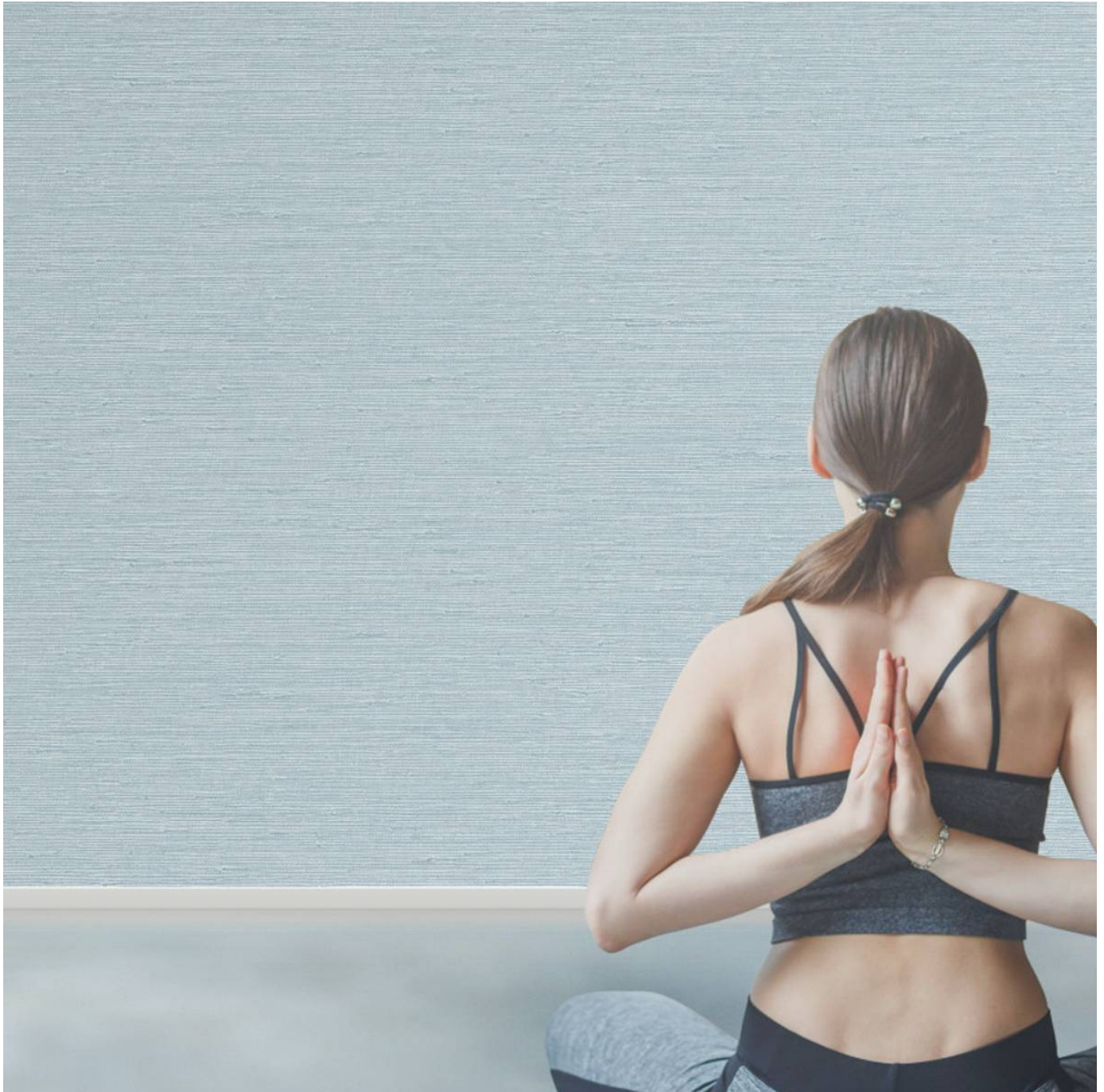


SANCTUARY YORK

Wallcoverings » Commercial Wallcoverings



Brand: **York**

SANCTUARY YORK

Wallcoverings » Commercial Wallcoverings



MCO2167



MCO2168



MCO2169



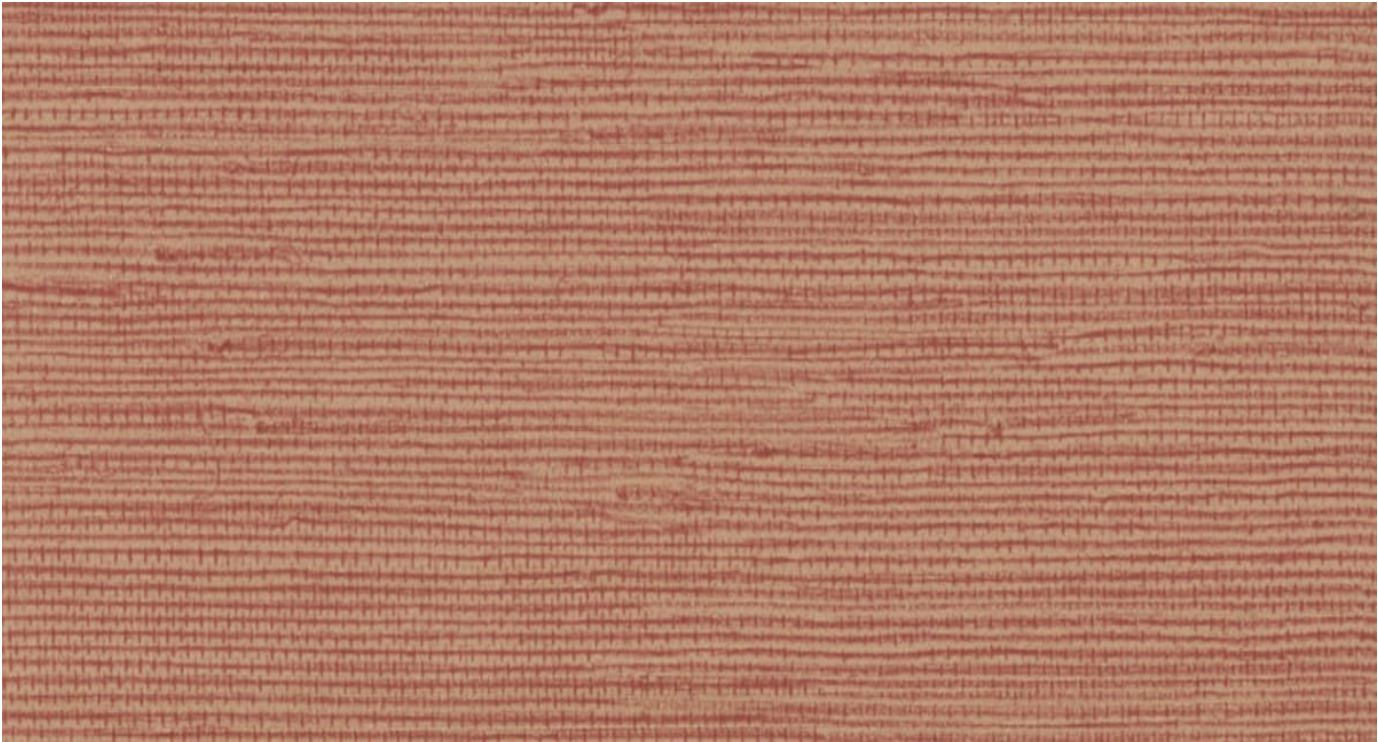
MCO2171



MCO2175

SANCTUARY YORK

Wallcoverings » Commercial Wallcoverings



Sanctuary is a 137cm wide commercial wallcovering with a textural canvas and horizontal wash that's available in 5 neutral colourways.

Roll Size	137cm x 27.4m - Available by the lineal metre
Composition	Vinyl face on a fabric backing
Environmental Info	<p>Formaldehyde free</p> <p>Heavy metals free</p> <p>Perfluorooctanoic acid free</p> <p>No solvent inks</p> <p>Low VOC emissions. Any VOCs dissipate quickly (faster than paint) through normal ventilation and have no recognized adverse impact on indoor air quality.</p> <p>Durability means products do not need to be replaced regularly due to wear and tear and being cleanable, vinyl products are ideal for helping keep commercial environments clean of bacteria.</p> <p>Baresque will only deal with vinyl manufacturers that comply with applicable state and federal regulations, provide a factory that is safe and clean for its employees to work in, recycle scrap and inks during the manufacturing process to minimize waste related to production.</p>

SANCTUARY YORK

Wallcoverings » Commercial Wallcoverings

Warranty 5-year warranty. Visit baresque.com.au/warranty for complete details.

Suggested Installation Non reverse hang/overlap double cut.
Baresque recommends and supplies Roman brand adhesives and primers.

Care Instructions Use cloth with any of the following in preferred order of use:

- 1: Clear warm water
- 2: Mild solution of liquid detergent and warm water
- 3: Isopropyl Alcohol (a.k.a. rubbing alcohol)

Remove any detergent with a clean, damp cloth. Gently pat dry.

For more difficult stains, dampen a soft white cloth with a solution of household bleach (10% bleach / 90% water). Rub gently.

Rinse with a water dampened cloth to remove bleach concentration.

Do not use solvent based or concentrated abrasive cleaning agents, lacquer thinners or nail polish remover as these may cause discolouration over a period of time.

Always test in an inconspicuous area first.

If care instructions don't deliver the expected results, cease cleaning method immediately and contact Baresque for assistance.
