

REFLECTIONS

Wallcoverings » Commercial Wallcoverings



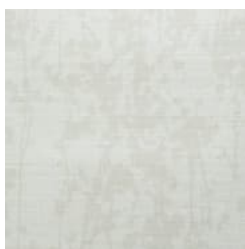
Brand: **Versa**

REFLECTIONS

Wallcoverings » Commercial Wallcoverings



ASL-126003



ASL-126011



ASL-126168



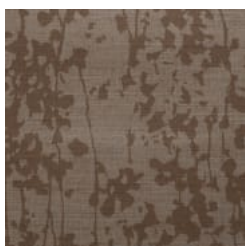
ASL-126191



ASL-126221



ASL-126256



ASL-126317



ASL-126343



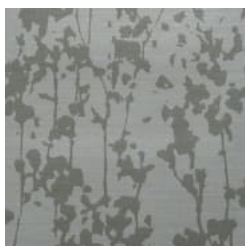
ASL-126390



ASL-126444



ASL-126492



ASL-126523



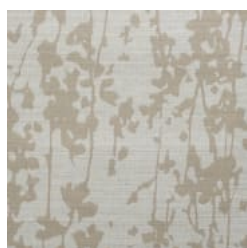
ASL-126552



ASL-126682



ASL-126760



ASL-126818



ASL-126874



ASL-126175

REFLECTIONS

Wallcoverings » Commercial Wallcoverings



Reflections is a 137cm wide commercial wallcovering with an abstract naturalistic pattern that's available in 18 colourways. versatile and durable.

- Phthalate Free
- Environmentally Friendly
- Anti-Microbial

Description	Reflections is a 137cm wide commercial wallcovering with an abstract naturalistic pattern that's available in 18 colourways. versatile and durable.
Roll Size	137cm wide x 27.4m - Available by the lineal metre
Composition	Vinyl face on a fabric backing 20% recycled content by weight with a minimum of 10% post consumer. Equivalent to 20oz (452 g/m²)
Pattern Repeat Size	V: 61 cm

REFLECTIONS

Wallcoverings » Commercial Wallcoverings

Environmental Info

Formaldehyde free

Heavy metals free

Perfluorooctanoic acid free

No solvent inks

Low VOC emissions. Any VOCs dissipate quickly (faster than paint) through normal ventilation and have no recognized adverse impact on indoor air quality.

Durability means products do not need to be replaced regularly due to wear and tear and being cleanable, vinyl products are ideal for helping keep commercial environments clean of bacteria.

Baresque will only deal with vinyl manufacturers that comply with applicable state and federal regulations, provide a factory that is safe and clean for its employees to work in, recycle scrap and inks during the manufacturing process to minimize waste related to production.

Fire Rating

Tested in accordance with AS ISO 9705 2003 for the purpose of determining the Group Number classification as required by the Building Code of Australia for the control of fire spread on interior wall and ceiling linings.

The result achieved was:

Classification - Group 2

Specific Extinction - Less than 250m²/kg

Warranty

5-year warranty. Visit baresque.com.au/warranty for complete details.

Lead Time

- 2-weeks (approx.) from Wednesday, subject to stock availability.
 - Additional 1-week for Western Australia.
 - Express delivery is available subject to a surcharge. Contact Baresque for details and pricing.
-

Suggested Installation

Reverse hang / overlap and double cut.

Baresque recommends and supply Roman brand adhesives and primers.

REFLECTIONS

Wallcoverings » Commercial Wallcoverings

Care Instructions

Always use a clean, white, soft cloth.

Use cloth with any of the following in preferred order of us:

1: Clear warm water

2: Mild solution of liquid detergent and warm water

3: Isopropyl Alcohol (a.k.a. rubbing alcohol)

Remove any detergent with a clean, damp cloth. Gently pat dry.

For more difficult stains, dampen a soft white cloth with a solution of household bleach (10% bleach / 90% water). Rub gently.

Rinse with a water dampened cloth to remove bleach concentration.

DO NOT USE solvent based or concentrated abrasive cleaning agents, lacquer thinners, nail polish remover as these may cause discolouration over a period of time.

Always test in an inconspicuous area first. If care instructions don't deliver the expected results, cease cleaning method immediately and contact Baresque for assistance.

Additional Comments

Reflections is designed to coordinate with Halycon
