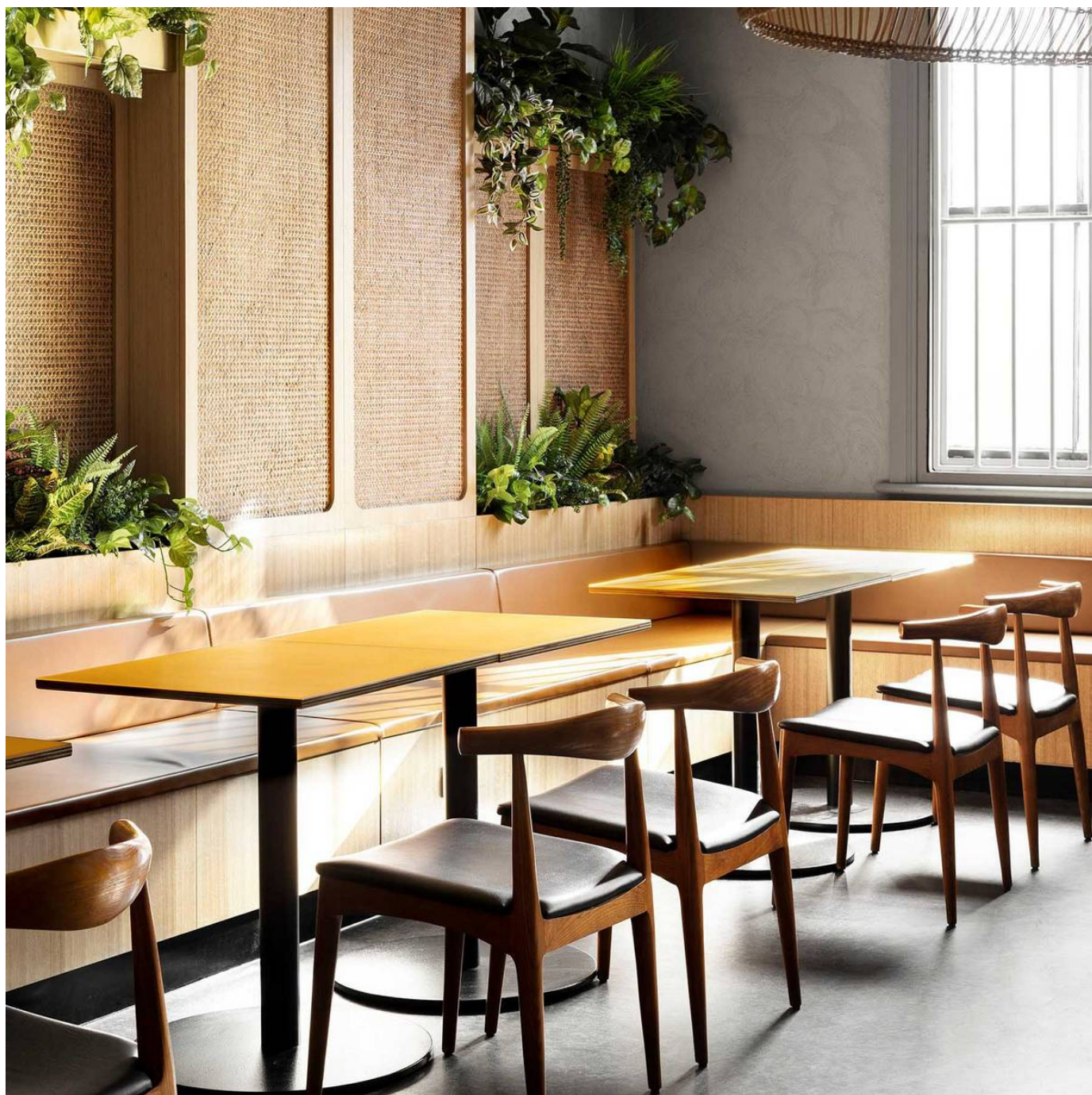


LIGHTBLOCK BOARD METALLICS

Acrylics, Resin & Laminates » Acrylics/Resin



Brand: **Lightblocks**

1300 306 399

info@baresque.com.au

baresque.com.au

1 of 4

LIGHTBLOCK BOARD METALLICS

Acrylics, Resin & Laminates » Acrylics/Resin



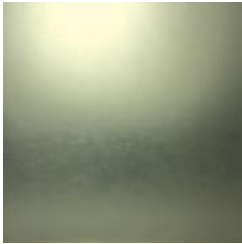
SILVER



GOLD



SLATE



SMOKEY TOPAZ

LIGHTBLOCK BOARD METALLICS

Acrylics, Resin & Laminates » Acrylics/Resin



Lightblocks Board Metallics adds an extra layer of glamour to your design turning a simple solution into an eye-catching feature.

- Bleach Cleanable
 - Soft touch
 - Unique Depth
- Fully Refinishable
 - Thermoformable
- Finger print proof
 - Seamless Joins

| | |
|-------------|---|
| Description | Fully refinishable resin with a soft touch <ul style="list-style-type: none">* Bleach cleanable* Fully refinishable* Finger print proof* Soft touch* Thermoformable* Seamless Joins* Unique Depth |
|-------------|---|

| | |
|-------------|--|
| Composition | Lightblocks resin. Lightblocks Board Metallic can be backed in a 1mm clear pvc for installation where the back of panel is exposed or where seamless joins are required. |
|-------------|--|

| | |
|----------|------|
| Finishes | Matt |
|----------|------|

| | |
|--------------------|--|
| Environmental Info | Easily recycled. Contact your nearest Baresque branch for details. |
|--------------------|--|

LIGHTBLOCK BOARD METALLICS

Acrylics, Resin & Laminates » Acrylics/Resin

| | |
|-----------|---|
| Lead Time | <ul style="list-style-type: none">• 2-weeks (approx.) from Wednesday, subject to stock availability.• Additional 1-week for Western Australia.• Express delivery is available subject to a surcharge. Contact Baresque for details and pricing. |
|-----------|---|

| | |
|------------------------|--|
| Fabrication Techniques | Standard wood-working tools. See Baresque Lightblocks Handling, Fabrication and Installation Guide for more details. |
|------------------------|--|

| | |
|----------------|--|
| How to Specify | <ol style="list-style-type: none">1. Colour2. Thickness3. Unbacked or Backed |
|----------------|--|

| | |
|-------------------|--|
| Care Instructions | <p>Always use a clean, white, soft cloth. When cleaning, never scrub Lightblocks. Gently wipe the surface.</p> <p>Use cloth with any of the following in preferred order of use:</p> <ul style="list-style-type: none">* Clear warm water* Mild solution of liquid detergent and warm water* Kerosene, hexane, or aliphatic naphtha, or any acrylic cleaner, such as Novus. Always follow manufacturer's recommended use and safety procedures. <p>Remove any oily residue left behind from solvent cleaning with detergent and water.</p> <p>For more difficult stains, dampen a soft white cloth with a solution of household bleach (10% bleach / 90% water). Rub gently. Rinse with a water dampened cloth to remove bleach concentration.</p> <p>DO NOT USE glass cleaning products, acetone, gasoline, benzene, lacquer thinner, chlorinated solvents, gritty abrasive scouring compounds, or alkaline cleaners as damage to the sheet will occur.</p> <p>DO NOT USE a squeegee, scraper, or synthetic rags that may scratch.</p> <p>if there is only a light scratch, refinishing can be achieved by rubbing the area in a random circular motion with a fine steel scouring pad (Scotch-brite).</p> <p>Test in an inconspicuous area before attempting a main area on the job.</p> |
|-------------------|--|

| | |
|--------------|----|
| Customisable | No |
|--------------|----|

| | |
|---------------------|---|
| Additional Comments | If Lightblocks Board is being fabricated into drop down edges or carved into for signage, a 1mm PVC protective layer can be added to the back of the panel at an additional cost. |
|---------------------|---|
