

SERENE

Fabrics » Vinyl and Faux Leather Fabrics



Brand: **Concertex**

SERENE

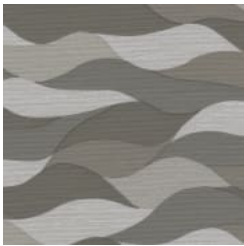
Fabrics » Vinyl and Faux Leather Fabrics

COLOURWAY CARD

COLOURWAY CARD



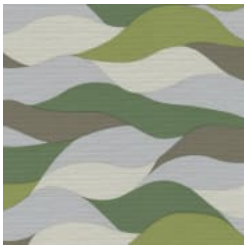
BEACH



GRAVITY



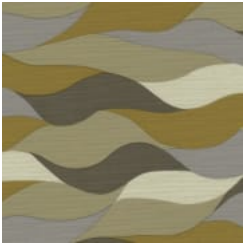
LAGOON



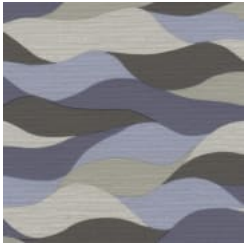
POND



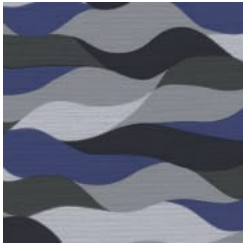
RED SAND



SUNRISE



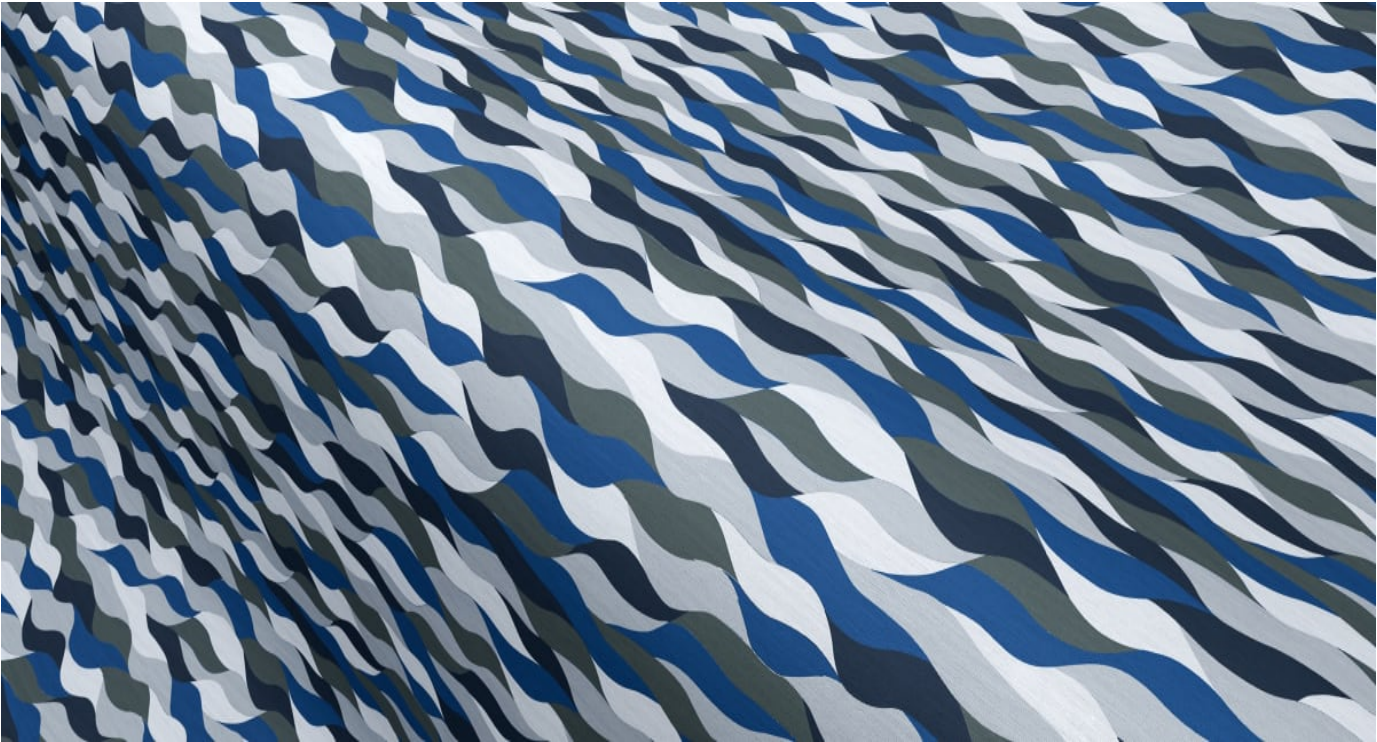
SURF



TIDE

SERENE

Fabrics » Vinyl and Faux Leather Fabrics



Serene is a 137cm wide silicone upholstery with a wave pattern inspired by the ocean. Available in 8 colourways.

- | | | |
|--------------------|--------------------|--------------------|
| ● PVC-Free | ● Phthalate Free | ● Anti-Bacterial |
| ● Anti-Microbial | ● Silicone Hybrid | ● Moisture Barrier |
| ● High Performance | ● Bleach Cleanable | ● Breathable |

Description	Found between the ebb and flow of everyday life, our serene fabric exists as a moment of calm. You'll find serenity in the simplicity of something you can count on, of an element that you can touch and know will be there for you. Soft yet strong, serene is adorned in soothing curves and colors that emulate rolling waves. It was designed to provide a sense of comfort that gives you the inner peace to step outside of your comfort zone. With its inherent graffiti-free silicone surface and 200,000+ double rubs, this product is perfect for healthcare and senior living facilities.
-------------	---

Roll Size	137cm x Approx 45m - Available by the lineal metre
-----------	--

Composition	Face - 100% Silicone, Inherently Graffiti-Free Middle - 100% Polyurethane Backing - 100% Polyester
-------------	--

Abrasion	200,000 + Double Rubs
----------	-----------------------

SERENE

Fabrics » Vinyl and Faux Leather Fabrics

Pattern Repeat Size 27.5cm H x 25.4cm V 10.813" H x 10" V

Environmental Info

- PVC free
- Phthalate Free
- DMF Free
- No added fire retardant
- Anti-Bacterial
- Healthier Hospitals compliant
- Complies with CAL01351

Fire Rating

- Tested in accordance with AS1530.3
- Spread of Flame Index - 0
- Smoke Developed Index - 5

Warranty 2-year warranty. Visit baresque.com.au/warranty for complete details.

Lead Time

- 2-weeks (approx.) from Wednesday, subject to stock availability.
- Additional 1-week for Western Australia.
- Express delivery is available subject to a surcharge. Contact Baresque for details and pricing.

Care Instructions

Wipe material with a clean, soft cloth dampened with a mild solution of liquid detergent and warm water. Repeat using only clean water, then dry with a lint free cloth.

Avoid using wax polishes, solvents or concentrated abrasives. For more difficult stains, dampen a soft white cloth with a solution of household bleach (10% bleach / 90% water). Rub gently. Rinse with a water dampened cloth to remove bleach concentration.

Always test in an inconspicuous area first.
