

# SPIRE KOROSEAL

Wallcoverings » Commercial Wallcoverings



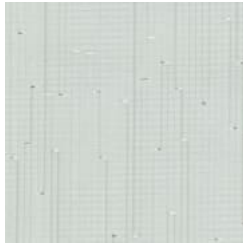
Brand: **Koroseal**

# SPIRE KOROSEAL

Wallcoverings » Commercial Wallcoverings

## COLOURWAY CARD

COLOURWAY CARD



SPR1-01 HERMITAGE



SPR1-02 CATHEDRAL



SPR1-03 WHITE  
HOUSE



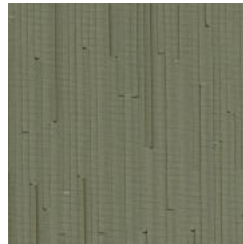
SPR1-04 SKYSCRAPER



SPR1-05 MUSEUM



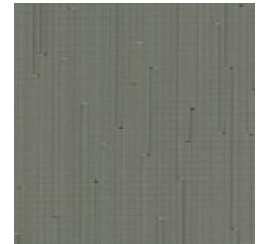
SPR1-06 PALACE



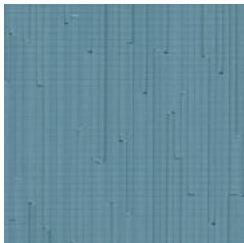
SPR1-07  
GREENHOUSE



SPR1-08 SPHINX



SPR1-09  
STONEHENGE



SPR1-10 ARENA



SPR1-11 VILLA



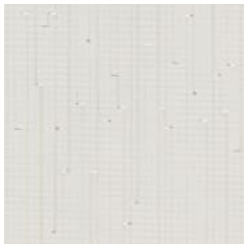
SPR1-12 IGLOO



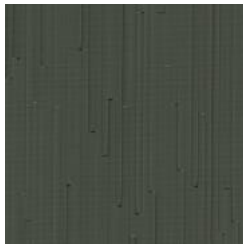
SPR1-13 PAGODA



SPR1-14 COLOSSEUM



SPR1-15 TAJ MAHAL



SPR1-16 CASTLE



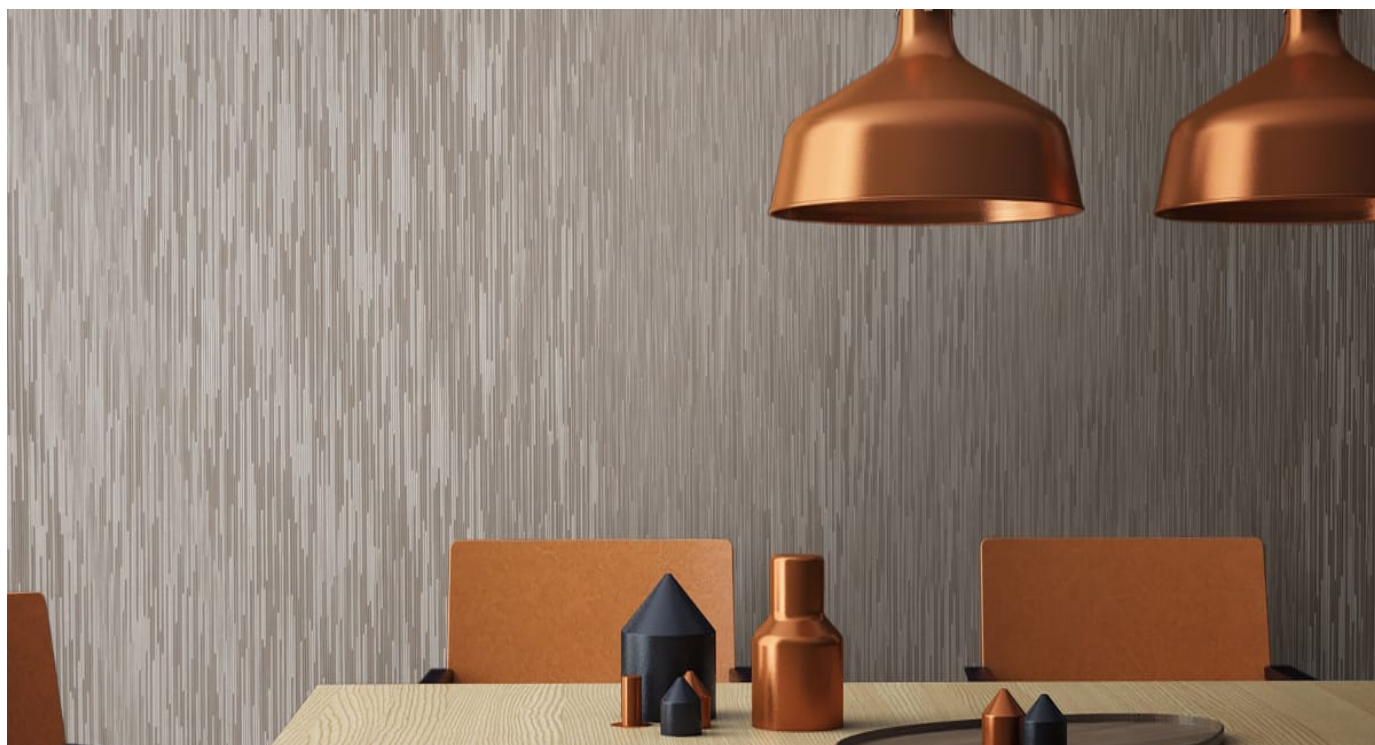
SPR1-17  
BROWNSTONE



SPR1-18 PYRAMID

# SPIRE KOROSEAL

Wallcoverings » Commercial Wallcoverings



Spire is a Type II wallcovering with a three-dimension pattern that's available in 18 colourways.

## ● Bleach Cleanable

Description	Reflection like the inside of a crystal. Modern glamour and three-dimensional reflection exploring the art and architecture of today.
-------------	---

Product Code	WC.SPIRE
--------------	----------

Roll Size	137cm wide x 27.4m - Available by the lineal metre
-----------	--

Weight	775 g PLM 566 g PSM
--------	------------------------

Composition	Vinyl face on a fabric backing 20oz (452 g/m <sup>2</sup> )
-------------	---

Pattern Repeat Size	N/A
---------------------	-----

# SPIRE KOROSEAL

Wallcoverings » Commercial Wallcoverings

Environmental Info	<p>Formaldehyde free</p> <p>Heavy metals free</p> <p>Perfluorooctanoic acid free</p> <p>No solvent inks</p> <p>Low VOC emissions. Any VOCs dissipate quickly (faster than paint) through normal ventilation and have no recognized adverse impact on indoor air quality.</p> <p>Durability means products do not need to be replaced regularly due to wear and tear and being cleanable, vinyl products are ideal for helping keep commercial environments clean of bacteria.</p> <p>Baresque will only deal with vinyl manufacturers that comply with applicable state and federal regulations, provide a factory that is safe and clean for its employees to work in, recycle scrap and inks during the manufacturing process to minimize waste related to production.</p>
Fire Rating	<p>Tested in accordance with AS ISO 9705 2003 for the purpose of determining the Group Number classification as required by the Building Code of Australia for the control of fire spread on interior wall and ceiling linings.</p> <p>The result achieved was: Classification - Group 2 Specific Extinction - Less than 250m<sup>2</sup>/kg</p>
Warranty	<p>5-year warranty. Visit <a href="https://baresque.com.au/warranty">baresque.com.au/warranty</a> for complete details.</p>
Lead Time	<ul style="list-style-type: none"><li>• 2-weeks (approx.) from Wednesday, subject to stock availability.</li><li>• Additional 1-week for Western Australia.</li><li>• Express delivery is available subject to a surcharge. Contact Baresque for details and pricing.</li></ul>
Suggested Installation	<p>Non reverse hang/overlap double cut.</p> <p>Baresque recommends and supplies Roman brand adhesives and primers.</p>

# SPIRE KOROSEAL

Wallcoverings » Commercial Wallcoverings

---

## Care Instructions

Use cloth with any of the following in preferred order of use:

1: Clear warm water

2: Mild solution of liquid detergent and warm water

3: Isopropyl Alcohol (a.k.a. rubbing alcohol)

Remove any detergent with a clean, damp cloth. Gently pat dry.

For more difficult stains, dampen a soft white cloth with a solution of household bleach (10% bleach / 90% water). Rub gently.

Rinse with a water dampened cloth to remove bleach concentration.

Do not use solvent based or concentrated abrasive cleaning agents, lacquer thinners or nail polish remover as these may cause discolouration over a period of time.

Always test in an inconspicuous area first.

If care instructions don't deliver the expected results, cease cleaning method immediately and contact Baresque for assistance.

---