

EMERSON

Wallcoverings » Commercial Wallcoverings



Brand: **Versa**

1300 306 399

info@baresque.com.au

baresque.com.au

1 of 5

EMERSON

Wallcoverings » Commercial Wallcoverings

COLOURWAY CARD

COLOURWAY CARD



A206-012 BIRCH



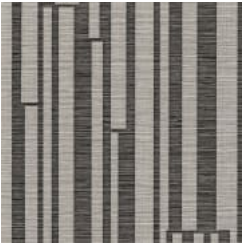
A206-038 HEATHER



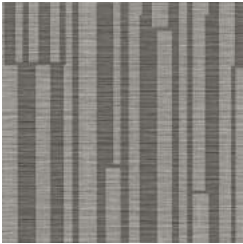
A206-104 VELLUM



A206-127 BUFF



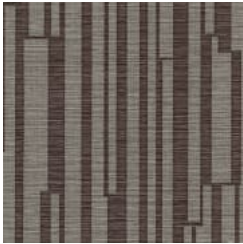
A206-819 BRIGHTON



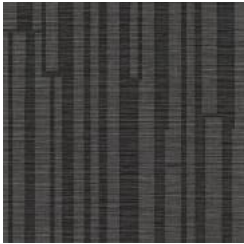
A206-826 ESSEX



A206-834 OXFORD



A206-867 REVERE



A206-882 AMHERST



Emerson is a commercial wallcovering with a linear graphic pattern that's available in 9 colourways.

- Bleach Cleanable
- Phthalate Free

Description	<p>Emerson displays a graphic, linear statement in combination with a structured textile backdrop. A coordinate to Emerson Texture, this pattern is a sophisticated blend of geometric impact and versatility.</p> <p>A timeless colour palette inspired by the Eastern Seaboard provides classic neutrals and nuanced accents. Emerson is available in 9 colourways and Emerson Texture is available in 17 colourways.</p>
Roll Size	132/137cm x 27.4m - Available by the lineal metre.
Weight	452 gr/m2
Composition	Vinyl face on a woven backing 20oz (452 g/m²)

Environmental Info

Formaldehyde free

Heavy metals free

Perfluorooctanoic acid free

No solvent inks

Low VOC emissions. Any VOCs dissipate quickly (faster than paint) through normal ventilation and have no recognized adverse impact on indoor air quality.

Durability means products do not need to be replaced regularly due to wear and tear and being cleanable, vinyl products are ideal for helping keep commercial environments clean of bacteria.

Baresque will only deal with vinyl manufacturers that comply with applicable state and federal regulations, provide a factory that is safe and clean for its employees to work in, recycle scrap and inks during the manufacturing process to minimize waste related to production.

Fire Rating

Tested in accordance with AS ISO 9705 2003 for the purpose of determining the Group Number classification as required by the Building Code of Australia for the control of fire spread on interior wall and ceiling linings.

The result achieved was:

Classification - Group 2

Specific Extinction - Less than 250m²/kg

Warranty

5-year warranty. Visit baresque.com.au/warranty for complete details.

Lead Time

- 2-weeks (approx.) from Wednesday, subject to stock availability.
- Additional 1-week for Western Australia.
- Express delivery is available subject to a surcharge. Contact Baresque for details and pricing.

Suggested Installation

Reverse hang / overlap and double cut.

Baresque recommends and supply Roman brand adhesives and primers.

EMERSON

Wallcoverings » Commercial Wallcoverings

Care Instructions

Always use a clean, white, soft cloth.

Use cloth with any of the following in preferred order of us:

1: Clear warm water

2: Mild solution of liquid detergent and warm water

3: Isopropyl Alcohol (a.k.a. rubbing alcohol)

Remove any detergent with a clean, damp cloth. Gently pat dry.

For more difficult stains, dampen a soft white cloth with a solution of household bleach (10% bleach / 90% water). Rub gently.

Rinse with a water dampened cloth to remove bleach concentration.

DO NOT USE solvent based or concentrated abrasive cleaning agents, lacquer thinners, nail polish remover as these may cause discolouration over a period of time.

Always test in an inconspicuous area first. If care instructions don't deliver the expected results, cease cleaning method immediately and contact Baresque for assistance.

Additional Comments

Coordinates with Emerson Texture.
