



Brand: **Koroseal**

COLOURWAY CARD

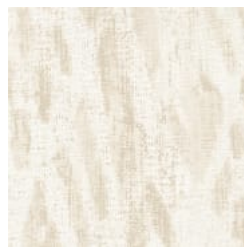
COLOURWAY CARD



SG15-01 CLOUD



SG15-02 ALABASTER



SG15-03 STRAND



SG15-04 CONCRETE



SG15-05 SKYSCRAPER



SG15-06 NIGHT LIFE



SG15-07
COBBLESTONE



Vim –Inspired by the organic shapes and elements that represent the harmony and constant flow of nature.

● **Mildew Resistant**

● **Bleach Cleanable**

Description	Vim is a multi-textural pattern with organic shapes and elements. A delightful mix of soft and rugged, Vim creates an interesting yet calming backdrop. From multifamily to hospitality, this chameleon-like design featuring warm and cool neutral with classic shades of blue, is sure to be showstopper.
-------------	---

Roll Size	132/137cm x 27.4m - Available by the lineal metre.
-----------	--

Weight	20oz (452g/m ²)
--------	-----------------------------

Composition	Type II Wallcovering 20 oz. ply Woven (Osnaburg) backing
-------------	---

Pattern Repeat Size	60.9 cm V / 132 cm H
---------------------	----------------------

Environmental Info

Formaldehyde free

Heavy metals free

Perfluorooctanoic acid free

No solvent inks

Low VOC emissions. Any VOCs dissipate quickly (faster than paint) through normal ventilation and have no recognized adverse impact on indoor air quality.

Durability means products do not need to be replaced regularly due to wear and tear and being cleanable, vinyl products are ideal for helping keep commercial environments clean of bacteria.

Baresque will only deal with vinyl manufacturers that comply with applicable state and federal regulations, provide a factory that is safe and clean for its employees to work in, recycle scrap and inks during the manufacturing process to minimize waste related to production.

Fire Rating

Tested in accordance with AS ISO 9705 2003 for the purpose of determining the Group Number classification as required by the Building Code of Australia for the control of fire spread on interior wall and ceiling linings.

The result achieved was:

Classification - Group 2

Specific Extinction - Less than 250m²/kg

Warranty

5-year warranty. Visit baresque.com.au/warranty for complete details.

Lead Time

- 2-weeks (approx.) from Wednesday, subject to stock availability.
 - Additional 1-week for Western Australia.
 - Express delivery is available subject to a surcharge. Contact Baresque for details and pricing.
-

Suggested Installation

Reverse hang / overlap and double cut.

Baresque recommends and supply Roman brand adhesives and primers.

Care Instructions

Use cloth with any of the following in preferred order of use:

- 1: Clear warm water
- 2: Mild solution of liquid detergent and warm water
- 3: Isopropyl Alcohol (a.k.a. rubbing alcohol)

Remove any detergent with a clean, damp cloth. Gently pat dry.

For more difficult stains, dampen a soft white cloth with a solution of household bleach (10% bleach / 90% water). Rub gently.

Rinse with a water dampened cloth to remove bleach concentration.

Do not use solvent based or concentrated abrasive cleaning agents, lacquer thinners or nail polish remover as these may cause discolouration over a period of time.

Always test in an inconspicuous area first.

If care instructions don't deliver the expected results, cease cleaning method immediately and contact Baresque for assistance.
