

TAHITIAN TAPA

Wallcoverings » Commercial Wallcoverings



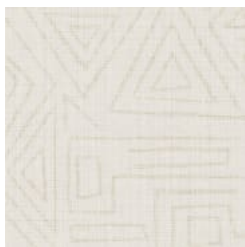
Brand: **Bolta**

TAHITIAN TAPA

Wallcoverings » Commercial Wallcoverings

COLOURWAY CARD

COLOURWAY CARD



BB-TT-01 WHITESAND



BB-TT-02 NATURAL
SAND



BB-TT-03
TERRACOTTA



BB-TT-04 COFFEE



BB-TT-05 FLAX



BB-TT-06 PEBBLE



BB-TT-07 DENIM

TAHITIAN TAPA

Wallcoverings » Commercial Wallcoverings



Tahitian Tapa is a wallcovering inspired by the Islands of Tahiti with geometric pattern that's available in 7 colourways.

● Low VOC

● Anti-Microbial

● Phthalate Free

Description

It is no surprise that organic shapes and soft lines sit atop all design trends as the world around us also mellows and connects more with nature. Tahitian Tapa's painterly, perfectly imperfect fine lines derive from The Islands of Tahiti, where the mountain peaks ascend dramatically inspiring artists and designers alike.

Celebrating this paradise on earth, Tahitian Tapa and Tahitian Linen pay through a carefully curated colour palette. For each Tahitian Tapa, there is a Tahitian Linen that compliments.

Roll Size

132cm wide X 27.4m- Available by the lineal metre.

Weight

452 g/m² (20 oz)

Composition

Type II Wallcovering
Backing: Non - Woven

Pattern Repeat Size

45.7 H

TAHITIAN TAPA

Wallcoverings » Commercial Wallcoverings

Environmental Info

Formaldehyde free

Heavy metals free

Perfluorooctanoic acid free

No solvent inks

Low VOC emissions. Any VOCs dissipate quickly (faster than paint) through normal ventilation and have no recognized adverse impact on indoor air quality.

Durability means products do not need to be replaced regularly due to wear and tear and being cleanable, vinyl products are ideal for helping keep commercial environments clean of bacteria.

Baresque will only deal with vinyl manufacturers that comply with applicable state and federal regulations, provide a factory that is safe and clean for its employees to work in, recycle scrap and inks during the manufacturing process to minimize waste related to production.

Fire Rating

Tested in accordance with AS ISO 9705 2003 for the purpose of determining the Group Number classification as required by the Building Code of Australia for the control of fire spread on interior wall and ceiling linings.

The result achieved was:

Classification - Group 2

Specific Extinction - Less than 250m²/kg

Warranty

5-year warranty. Visit baresque.com.au/warranty for complete details.

Lead Time

- 2-weeks (approx.) from Wednesday, subject to stock availability.
- Additional 1-week for Western Australia.
- Express delivery is available subject to a surcharge. Contact Baresque for details and pricing.

Suggested Installation

Non-reverse hang alternate drops/straight across match/overlap and double cut.

Baresque recommends and supplies Roman brand adhesives and primers.

TAHITIAN TAPA

Wallcoverings » Commercial Wallcoverings

Care Instructions

Use cloth with any of the following in preferred order of use:

1: Clear warm water

2: Mild solution of liquid detergent and warm water

3: Isopropyl Alcohol (a.k.a. rubbing alcohol)

Remove any detergent with a clean, damp cloth. Gently pat dry.

For more difficult stains, dampen a soft white cloth with a solution of household bleach (10% bleach / 90% water). Rub gently.

Rinse with a water dampened cloth to remove bleach concentration.

Do not use solvent based or concentrated abrasive cleaning agents, lacquer thinners or nail polish remover as these may cause discolouration over a period of time.

Always test in an inconspicuous area first.

If care instructions don't deliver the expected results, cease cleaning method immediately and contact Baresque for assistance.

Additional Comments

Inherent anti-microbial protection

Withstands hospital-grade cleaners & disinfectants.
