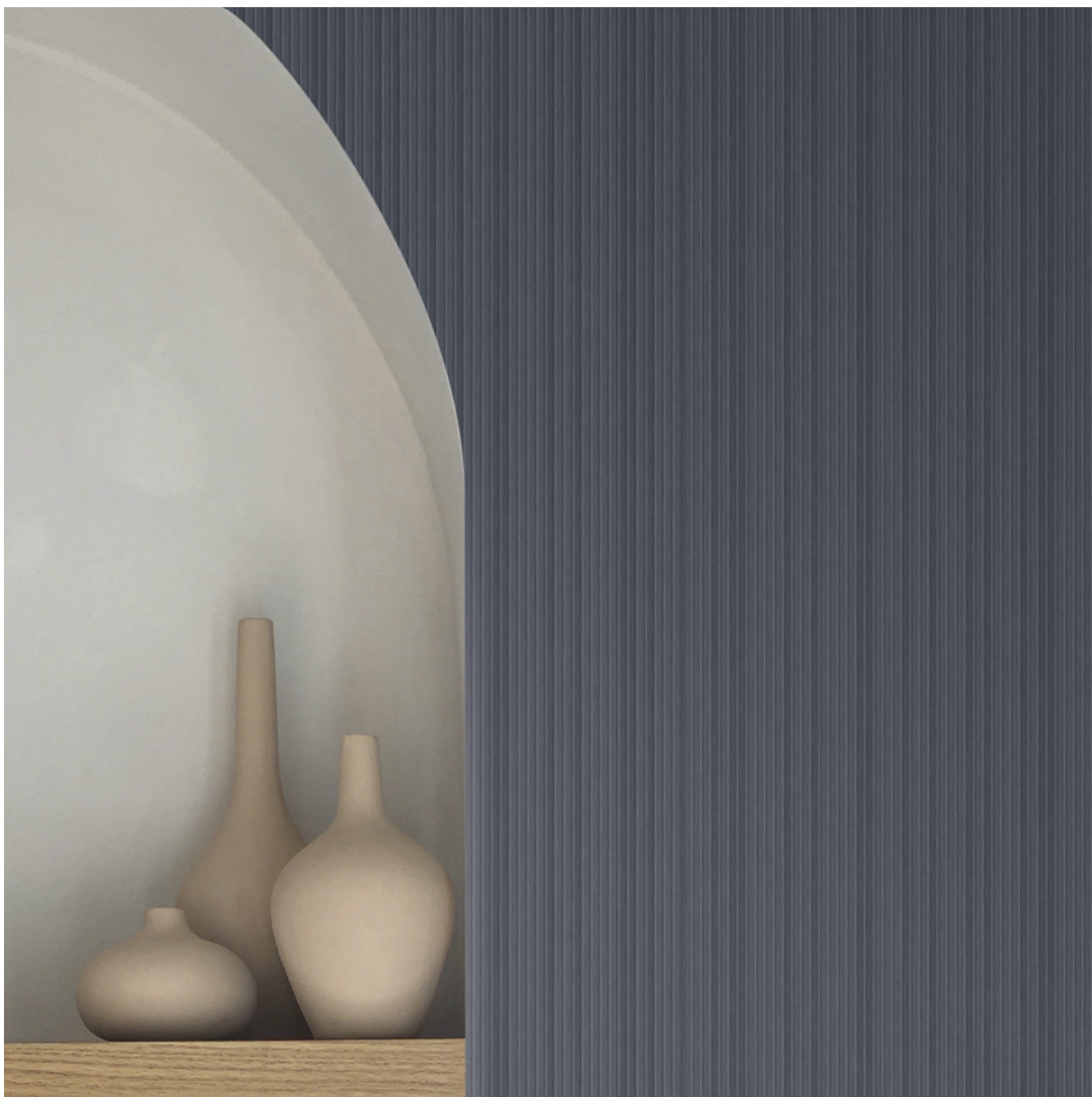


DOURO

Wallcoverings » Commercial Wallcoverings



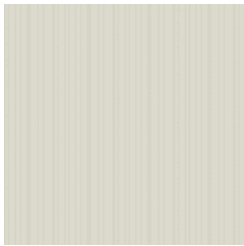
Brand: **Versa**

DOURO

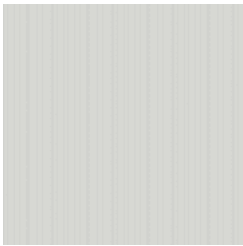
Wallcoverings » Commercial Wallcoverings

COLOURWAY CARD

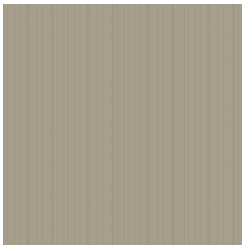
COLOURWAY CARD



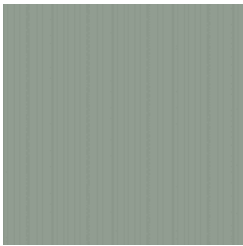
AVF25-018 MOMENTO



AVF25-023 BLANK
SLATE



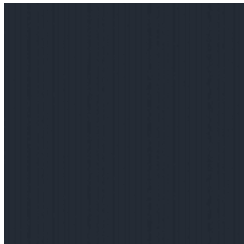
AVF25-172 FRONT
PORCH



AVF25-205 NORTH
DELL



AVF25-363
BRILLIANCE



AVF25-399 GREAT
DEPTHS



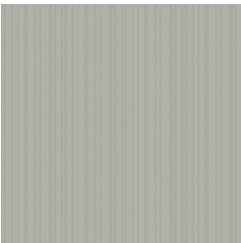
AVF25-541
ALPENGLOW



AVF25-610 TOFFEE



AVF25-622
HIGHLAND



AVF25-809 WHISPER



AVF25-834
BACKDROP



AVF25-867 UP THE
ROAD

DOURO

Wallcoverings » Commercial Wallcoverings



Douro is a heavy-duty commercial wallcovering with exceptional resistance to tearing and pulling. It's PVC-free and made of 30% recycled content

- Bleach Cleanable
 - HPD Certified
- Low VOC
 - PVC-Free
- EPD Certified

Description	<p>Reminiscent of corded fabric, Douro is a polished and refined stria created by a deep vertical emboss.</p> <p>The simplicity coupled with the depth of the surface produces a design that is both modern and classic.</p> <p>The 12-SKU colour palette of sleek neutrals and bright pops of colour is enhanced by a metallic sheen. PVC-free Olefin composite; 30% recycled content; Type III 33 oz.; Drill backing; reverse hang / random match installation.</p>
Roll Size	132/137cm x 27.4m - Available by the lineal metre.
Weight	745 (g/m²)
Composition	Vinyl face on drill backing 33oz (745g/m²)
Pattern Repeat Size	Not Applicable

Environmental Info	<p>Versa's range of PVC wallcoverings is manufactured from 20% recycled content.</p> <ul style="list-style-type: none">-Free of antimicrobials- Phthalate free- Heavy metal free-Low VOC emitting- CA 01350 complaint-Free of toxic flame retardants- Formaldehyde free- BPA Free
--------------------	--

Fire Rating	<p>Tested in accordance with AS ISO 9705 2003 for the purpose of determining the Group Number classification as required by the Building Code of Australia for the control of fire spread on interior wall and ceiling linings.</p> <p>Classification - Group 3 Specific Extinction - Less than 250m²/kg</p>
-------------	---

Warranty	5-year warranty. Visit baresque.com.au/warranty for complete details.
----------	--

Lead Time	<ul style="list-style-type: none">• 2-weeks (approx.) from Wednesday, subject to stock availability.• Additional 1-week for Western Australia.• Express delivery is available subject to a surcharge. Contact Baresque for details and pricing.
-----------	---

Suggested Installation	<p>Reverse hang / overlap and double cut.</p> <p>Baresque recommends and supply Roman brand adhesives and primers.</p>
------------------------	--

DOURO

Wallcoverings » Commercial Wallcoverings

Care Instructions

Always use a clean, white, soft cloth.

Use cloth with any of the following in preferred order of us:

1: Clear warm water

2: Mild solution of liquid detergent and warm water

3: Isopropyl Alcohol (a.k.a. rubbing alcohol)

Remove any detergent with a clean, damp cloth. Gently pat dry.

For more difficult stains, dampen a soft white cloth with a solution of household bleach (10% bleach / 90% water). Rub gently.

Rinse with a water dampened cloth to remove bleach concentration.

DO NOT USE solvent based or concentrated abrasive cleaning agents, lacquer thinners, nail polish remover as these may cause discolouration over a period of time.

Always test in an inconspicuous area first. If care instructions don't deliver the expected results, cease cleaning method immediately and contact Baresque for assistance.
