

# EAST END

Wallcoverings » Commercial Wallcoverings

---



Brand: **York**

1300 306 399

[info@baresque.com.au](mailto:info@baresque.com.au)

[baresque.com.au](http://baresque.com.au)

1 of 4

# EAST END

Wallcoverings » Commercial Wallcoverings

## COLOURWAY CARD

COLOURWAY CARD



SG3130 SMOKE



SG3131 CRYSTAL



SG3132 ASH



SG3133 SLATE



SG3134 TWILIGHT



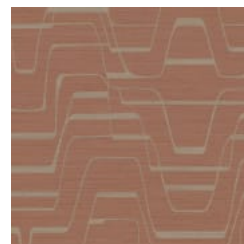
SG3135 ALABASTER



SG3136 QUARTZ



SG3137 DRIFTWOOD



SG3138 SPICE

# EAST END

Wallcoverings » Commercial Wallcoverings



Inspired by the Florin Court Building in London, East End presents bold colours in geometric shapes and a sense of luxury and modernity.

- Bleach Cleanable
- Anti-Microbial

Description	Wavelengths that bring organic inspiration to modern technology pulse across a canvas of textural raw silk to balance any size space with captivating, vivacious geometry.
Roll Size	137cm wide X 91m- Available by the lineal metre
Weight	452 g/m <sup>2</sup>
Composition	Vinyl face on a non-woven backing (452 g/m <sup>2</sup> )
Pattern Repeat Size	64cm V

# EAST END

Wallcoverings » Commercial Wallcoverings

Fire Rating	<p>Tested in accordance with AS ISO 9705 2003 for the purpose of determining the Group Number classification as required by the Building Code of Australia for the control of fire spread on interior wall and ceiling linings.</p> <p>The result achieved was: Classification - Group 2 Specific Extinction - Less than 250m<sup>2</sup>/kg</p>
Warranty	<p>5-year warranty. Visit <a href="https://baresque.com.au/warranty">baresque.com.au/warranty</a> for complete details.</p>
Lead Time	<ul style="list-style-type: none"><li>• 2-weeks (approx.) from Wednesday, subject to stock availability.</li><li>• Additional 1-week for Western Australia.</li><li>• Express delivery is available subject to a surcharge. Contact Baresque for details and pricing.</li></ul>
Suggested Installation	<p>Non-reverse hang / drop match / overlap and double cut.</p> <p>Baresque recommends and supplies Romans brand adhesives and primers.</p>
Care Instructions	<p>Use cloth with any of the following in preferred order of use:</p> <ol style="list-style-type: none"><li>1: Clear warm water</li><li>2: Mild solution of liquid detergent and warm water</li><li>3: Isopropyl Alcohol (a.k.a. rubbing alcohol)</li></ol> <p>Remove any detergent with a clean, damp cloth. Gently pat dry.</p> <p>For more difficult stains, dampen a soft white cloth with a solution of household bleach (10% bleach / 90% water). Rub gently.</p> <p>Rinse with a water dampened cloth to remove bleach concentration.</p> <p>Do not use solvent based or concentrated abrasive cleaning agents, lacquer thinners or nail polish remover as these may cause discolouration over a period of time.</p> <p>Always test in an inconspicuous area first.</p> <p>If care instructions don't deliver the expected results, cease cleaning method immediately and contact Baresque for assistance.</p>