

DOODLE

Fabrics » Woven Fabrics



Brand: **Concertex**

1300 306 399

info@baresque.com.au

baresque.com.au

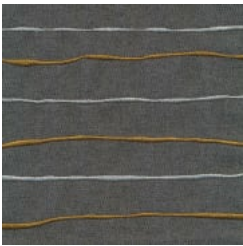
1 of 4

DOODLE

Fabrics » Woven Fabrics

COLOURWAY CARD

COLOURWAY CARD



BLUFF



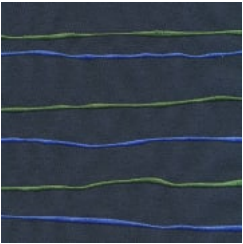
DUNE



FLAME



HORIZON



TIDE



WAVE

DOODLE

Fabrics » Woven Fabrics



Unleash your inner artist with Doodle! Wavy lines and bold colours evoke carefree creativity. Durable, cleanable, and perfect for vibrant spaces.

- Bleach Cleanable
- PFAS Free
- Stain Resistant

Description

Inspired by carefree creativity, Doodle is an invitation to put pen to paper and let your imagination run wild.

With thick and thin irregular lines made of two embroidery colours that resemble waves, horizons, tides, dunes, and more, Doodle is a cheerful fabric that blurs lines and stretches time.

The Premiere™ embroidery technology makes Doodle a performance embroidery that passes over 200,000 double rubs, is bleach cleanable and has a PFAS-free stain resistance.

Roll Size

137cm x 45.7m - Available by the lineal metre

Composition

100% Polyester

Backing: Premiere Embedded Acrylic - Water Based

Abrasion

200,000+ Double Rubs (Wyzenbeek)

Pattern Repeat Size

30.4 cm V / 40.6 cm H

DOODLE

Fabrics » Woven Fabrics

Warranty

2-year warranty. Visit baresque.com.au/warranty for complete details.

Lead Time

- 2-weeks (approx.) from Wednesday, subject to stock availability.
 - Additional 1-week for Western Australia.
 - Express delivery is available subject to a surcharge. Contact Baresque for details and pricing.
-

Care Instructions

Always use a clean, white, soft cloth.

Clean in situ using a damp cloth and mild detergent. Sponge down afterwards with a clean, damp cloth.

Using a cloth to pat dry will help eliminate watermarks.

Ensure the pile is brushed back to its natural direction.

Upholstered furniture should be regularly vacuumed or brushed with a soft nylon brush to remove grit or dust, which may damage the pile.

Never use stiff bristles or wire brushes, as they may damage the fabric.

For more difficult stains, dampen a soft white cloth with a solution of household bleach (10% bleach / 90% water). Rub gently. Rinse with a water dampened cloth to remove bleach concentration.

Always test in an inconspicuous area first. If care instructions don't deliver the expected results, cease cleaning method immediately and contact Baresque for assistance.
