

# MATTE

Fabrics » Woven Fabrics



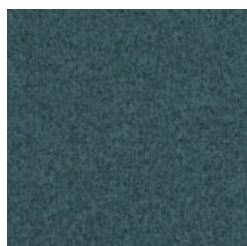
Brand: **Burch**

# MATTE

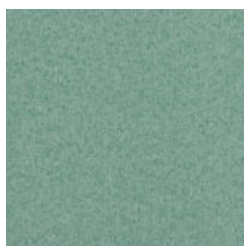
Fabrics » Woven Fabrics



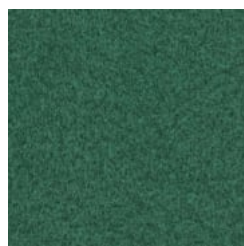
COLOURWAY CARD



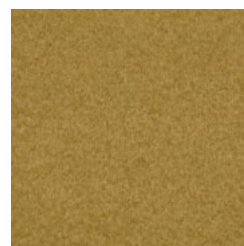
1012349 EQUATOR



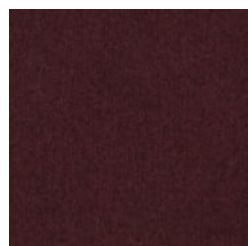
1012350 CELESTE



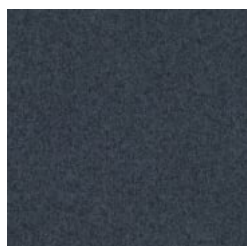
1012351 KELP



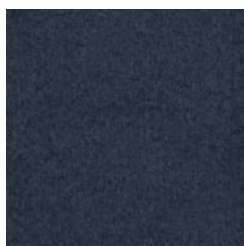
1012352 GOLD RUSH



1012353 GARNET



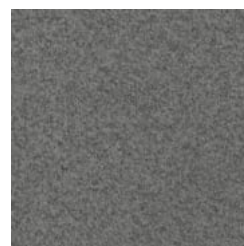
1012354 GEMINI



1012355 OXFORD



1012356 STORM



1012357 CHROME



1012358 ANTIQUE



1012359  
BUTTERCREAM



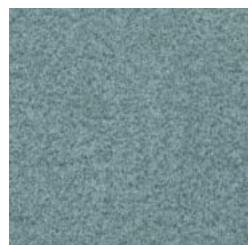
1012360 CREMINI



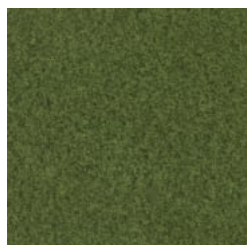
1012361 MINK



1012362 COFFEE



1012389 SEABREEZE



1012390 CLOVER

# MATTE

Fabrics » Woven Fabrics



With a wool like design, Matte is high performance Crypton fabric that's bleach cleanable and Greenguard Gold certified. Available in 16 colourways.

- Crypton
  - Stain Resistant
- Greenguard Gold Certified
  - Bleach Cleanable
- Water Resistant

Description	An updated take on a felted “wool” Matte makes a sophisticated statement. Matte is available in sixteen hues emphasizing classics like Chrome, Oxford, and Garnet.
Roll Size	137cm x 45.7m - Available by the lineal metre
Weight	722 g/m²
Composition	CRYPTON - 100% Polyester
Abrasion	100,000 Double Rubs (Wyzenbeek)
Pattern Repeat Size	Not Applicable

## Environmental Info

Greenguard Certifications contributes towards LEED credits for low-emitting furniture and ensures compliance with Business and Institutional Furniture Manufacturers Association (BIFMA) X7.1 standard and BIFMA e3 credit 7.6.1.

Greenguard Gold Certification standard includes:

\* Health-based criteria for additional chemicals and requires lower total VOC emissions levels to help ensure that products are acceptable for use in environments like schools and healthcare facilities.

\* Products that also comply with requirements of the state of California's Department of Public Health (CDPH) "Standard Method for the Test and Evaluation of Volatile Organic Chemical Emissions from Indoor Sources Using Environmental Chambers, Version 1.2 (2017)" (also known as California Section 01350).

\* Products that are compliant with the BIFMA X7.1 standard and BIFMA e3 credits 7.6.1, 7.6.2, and 7.6.3.

---

## Fire Rating

Tested in accordance with AS1530.3

Spread of Flame Index - 0

Smoke Developed Index - 5

---

## Warranty

2-year warranty. Visit [baresque.com.au/warranty](https://baresque.com.au/warranty) for complete details.

---

## Lead Time

- 2-weeks (approx.) from Wednesday, subject to stock availability.
  - Additional 1-week for Western Australia.
  - Express delivery is available subject to a surcharge. Contact Baresque for details and pricing.
-

# MATTE

Fabrics » Woven Fabrics

---

## Care Instructions

Always use a clean, white, soft cloth.

Prepare a mixture of 1/3 Napisan and 2/3 Fab. Combine the mixture with water to make a paste about the consistency of soft margarine i.e. not too runny. Apply using a soft bristle brush. Leave for 10 minutes.

Use a brush and clean, warm water to remove the paste being sure to renew the water so that it remains clean.

Never use stiff bristles or wire brushes, as they may damage the fabric. To prevent soil build-up, frequent vacuuming is recommended.

Using a cloth to pat dry will help eliminate watermarks.

For more difficult stains, dampen a soft white cloth with a solution of household bleach (10% bleach / 90% water). Rub gently. Rinse with a water dampened cloth to remove bleach concentration.

Always test in an inconspicuous area first. If care instructions don't deliver the expected results, cease cleaning method immediately and contact Baresque for assistance.

---