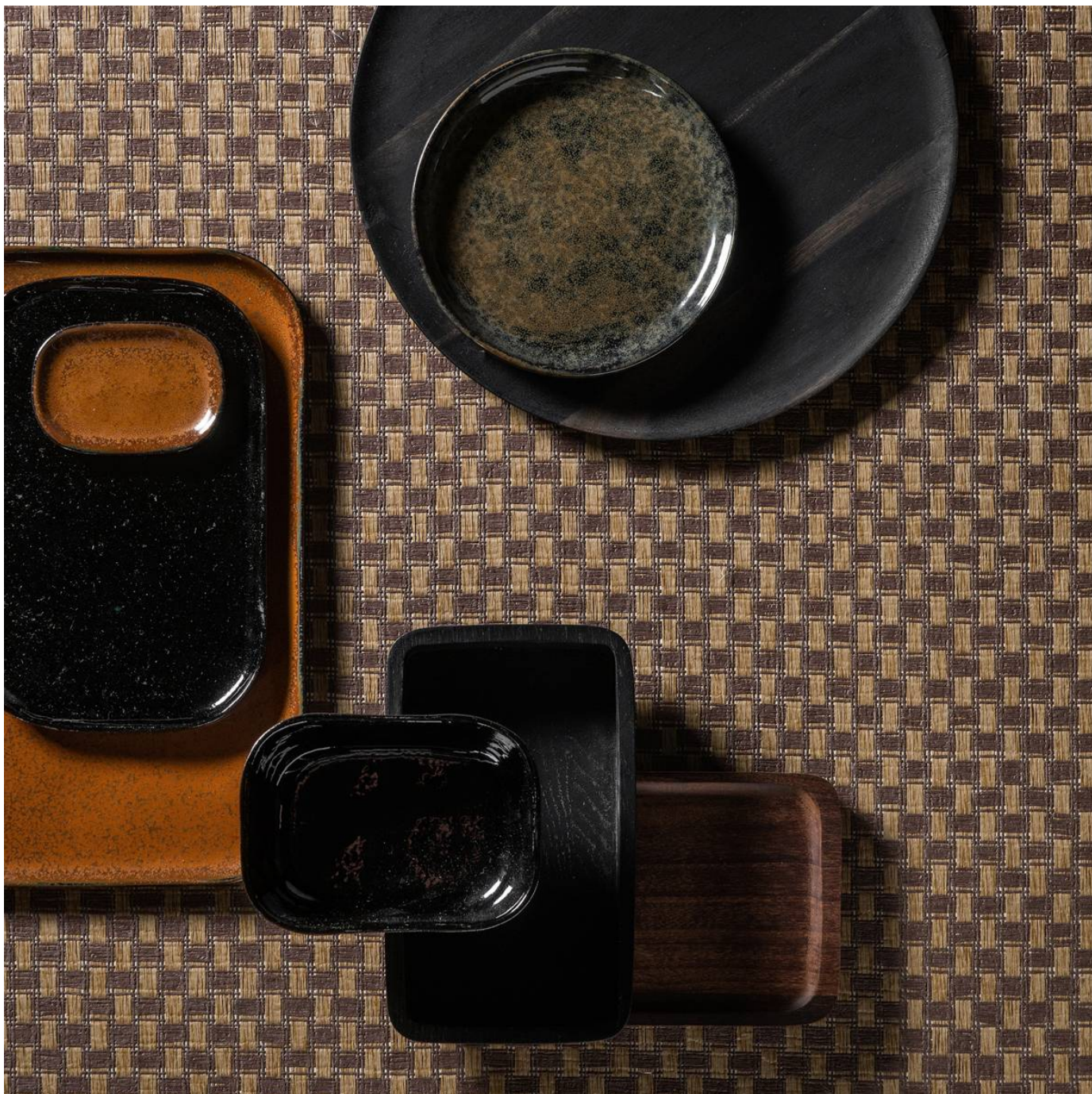


# TWIST TRIBU

Wallcoverings » Decorative Wallcoverings



Brand: **Omexco**

Collection: **Tribu**

1300 306 399

[info@baresque.com.au](mailto:info@baresque.com.au)

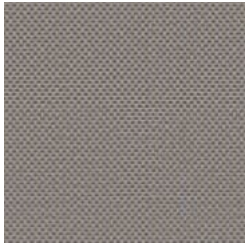
[baresque.com.au](http://baresque.com.au)

1 of 5

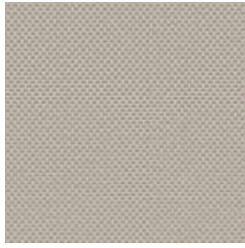
# TWIST TRIBU

Wallcoverings » Decorative Wallcoverings

---



TRU60



TRU61



TRU62

# TWIST TRIBU

Wallcoverings » Decorative Wallcoverings

---

Twist - Tribu is a 91cm wide decorative wallcovering inspired by ancestral weaving traditions from Asia to Africa. Available in 3 colourways.

---

**Description** Tribu is a contemporary collection of woven wallcoverings that honours ancestral weaving traditions from Asia to Africa. Beautifully simple, these serene subtle plains are highlighted by a stunning irregular stripe and strikingly daring prints. Drawing on ancient Japanese techniques, Omexco's paper is dyed or printed, cut into ribbons, twisted into threads and finally woven into refined textures. The Tribu collection exudes sophisticated simplicity. A perfect balance of quiet luxury and understated elegance.

---

**Roll Size** 91cm wide - Available by the lineal metre

---

**Composition** Paper weave on a non-woven backing

---

**Pattern Repeat Size** N/A

---

**Fire Rating** Tested in accordance with AS ISO 9705 2003 for the purpose of determining the Group Number classification as required by the Building Code of Australia for the control of fire spread on interior wall and ceiling linings.

The result achieved was:  
Classification - Group 2  
Specific Extinction - Less than 250m<sup>2</sup>/kg

---

**Warranty** 2-year warranty. Visit [baresque.com.au/warranty](https://www.baresque.com.au/warranty) for complete details.

---

**Lead Time**

- 2-weeks (approx.) from Wednesday, subject to stock availability.
- Additional 1-week for Western Australia.
- Express delivery is available subject to a surcharge. Contact Baresque for details and pricing.

---

# TWIST TRIBU

Wallcoverings » Decorative Wallcoverings

---

## Suggested Installation

Non-reverse hang / butt join.

If your order contains several numbered rolls of one single item/ reference, please first install the roll with the highest number, and then continue to install the other rolls in sequence, in descending order.

Measure and cut 3 strip lengths. Add 5 to 10 cm to top and bottom of each strip.

For printed patterns, plan your match from the roll before cutting

Mark each strip coming from the roll on the back and hang in the same sequence

Reverse alternate lengths when instructed to do so by label on the roll

---

## Care Instructions

Always use a clean, white, soft cloth.

Remove liquid stains immediately using a dry cloth. Avoid hard scrubbing.

For tougher stains, dampen the cloth with warm water or a weak dilution of liquid detergent and apply being careful not to soak the material. Always work towards the centre of the stain so as to avoid further spreading.

Remove any detergent with a clean, damp cloth. Gently pat dry.

Always test in an inconspicuous area first.

---

## Additional Comments

Seamless installation. As this design is made of natural materials, some variation in colour within and across batches is an inherent, unavoidable and enjoyable characteristic of the product.

---

# TWIST TRIBU

Wallcoverings » Decorative Wallcoverings

---

## Colour & Finish Options