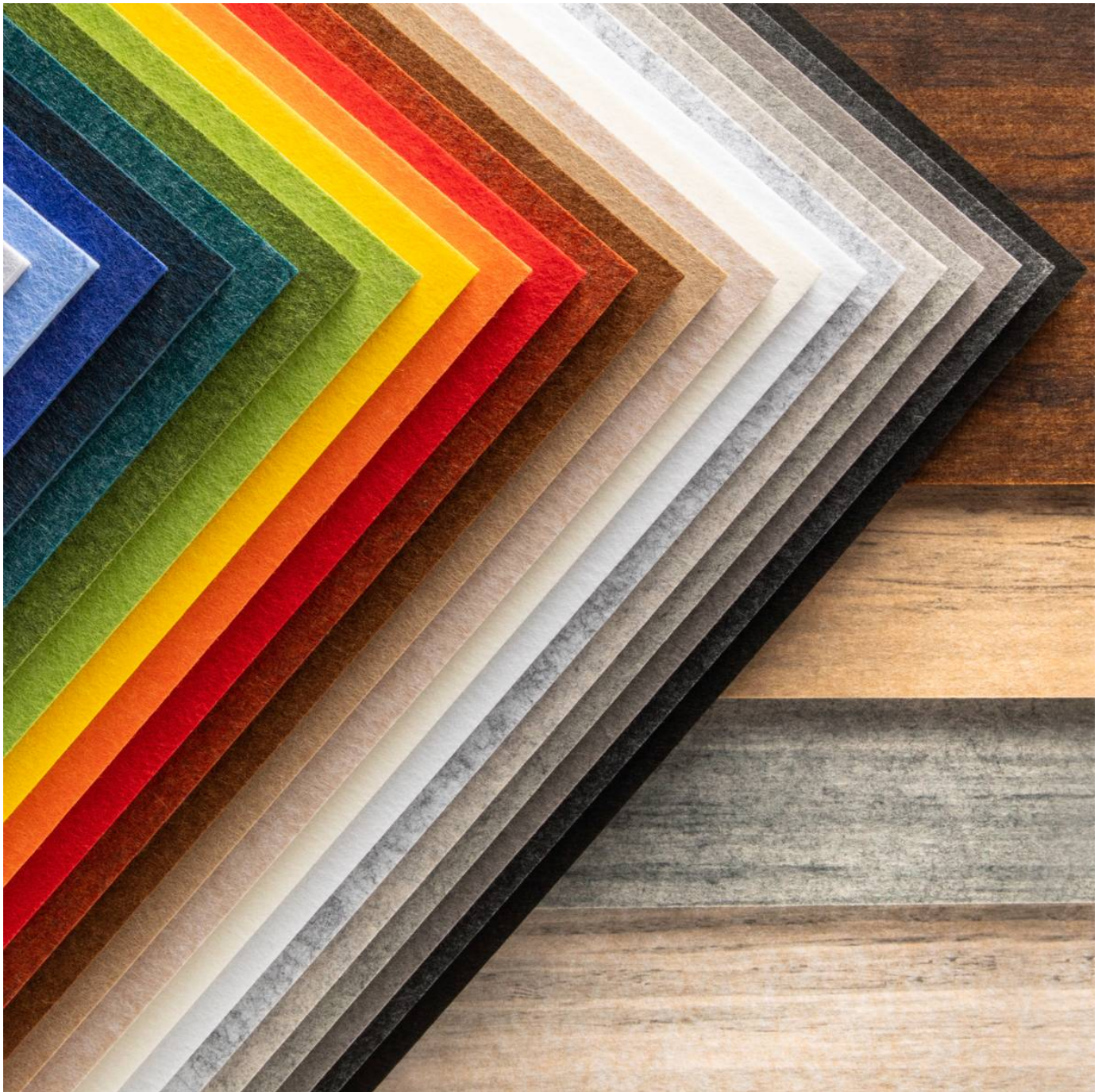


# ZINTRA 12MM ACOUSTIC PANEL

Acoustics » Acoustic Panels



Brand: **Zintra**

# ZINTRA 12MM ACOUSTIC PANEL

Acoustics » Acoustic Panels

---

## COLOURWAY CARD

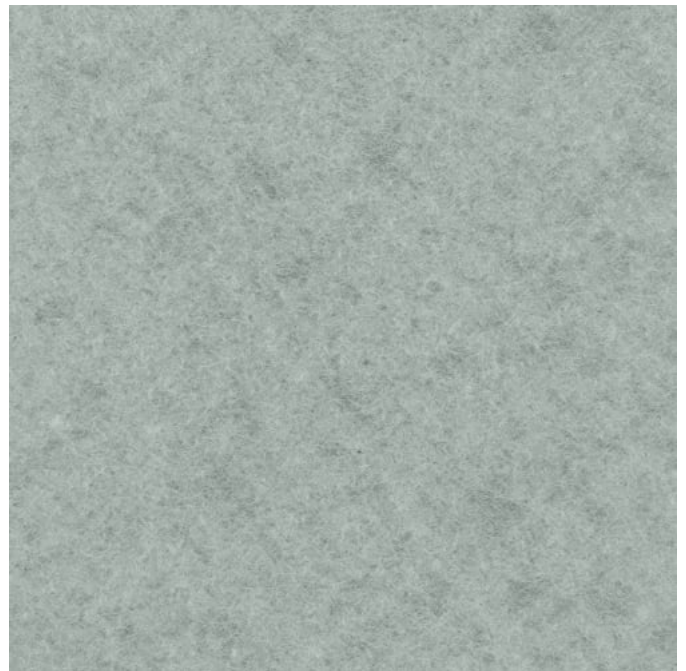
COLOURWAY CARD



BARK/COCOA



BRICK

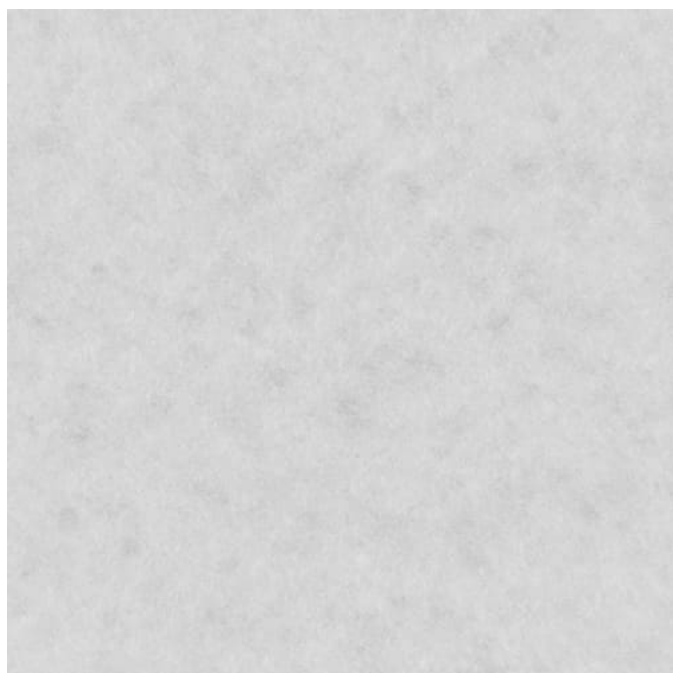


CADET

# ZINTRA 12MM ACOUSTIC PANEL

Acoustics » Acoustic Panels

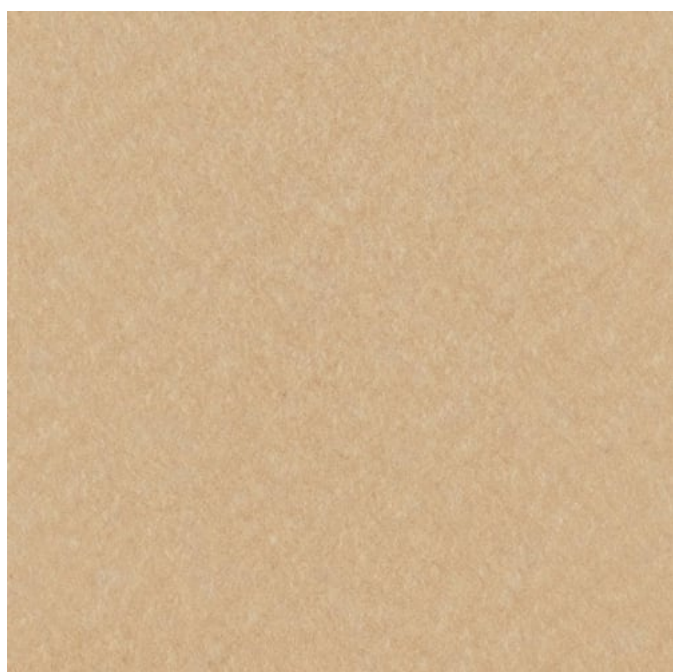
---



CHAMBRAY/PERIWINKLE



COBALT/NAVY



ECRU/TAUPE

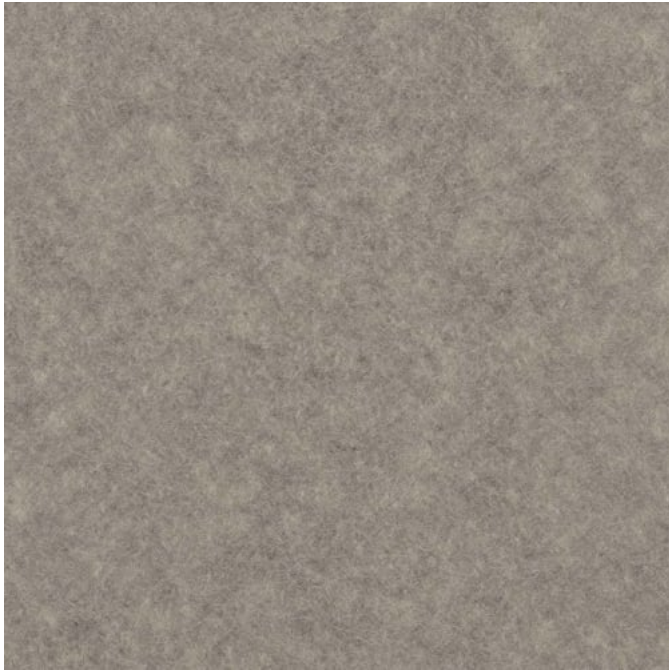


ELDERBERRY

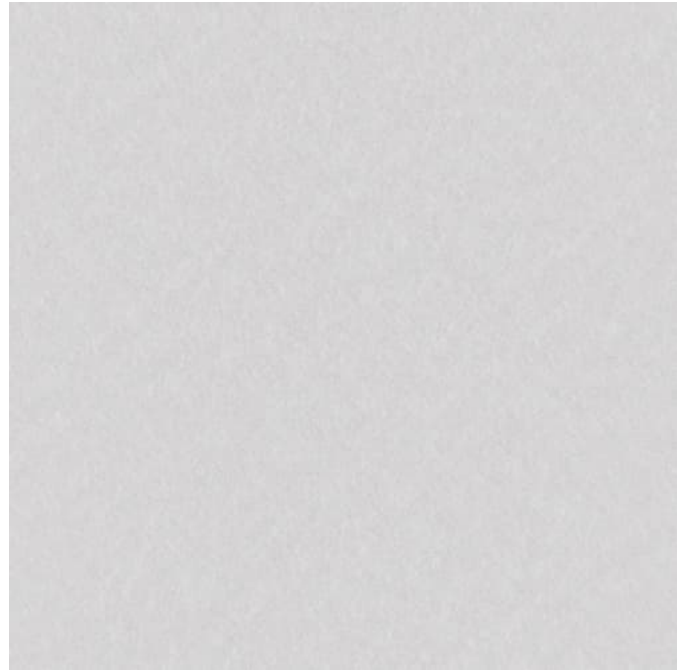
# ZINTRA 12MM ACOUSTIC PANEL

Acoustics » Acoustic Panels

---



FOSSIL



FROST/WHITE



GRASS/LIME

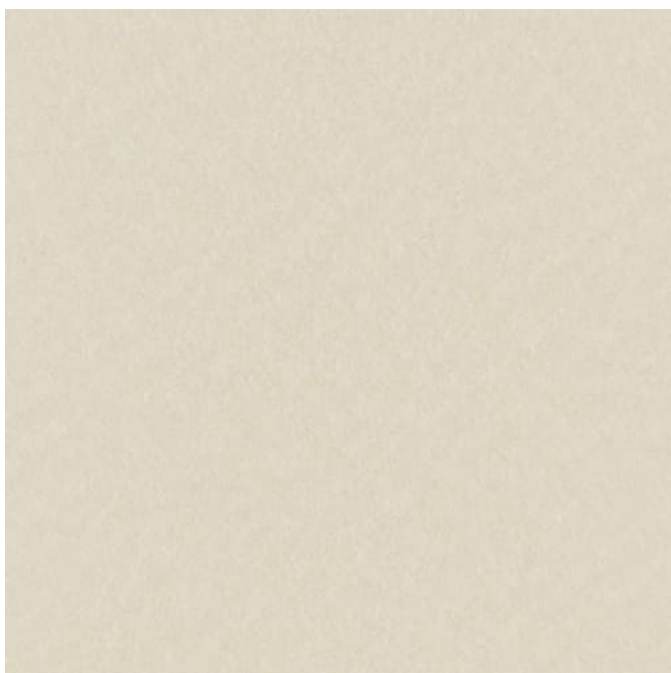


GREIGE

# ZINTRA 12MM ACOUSTIC PANEL

Acoustics » Acoustic Panels

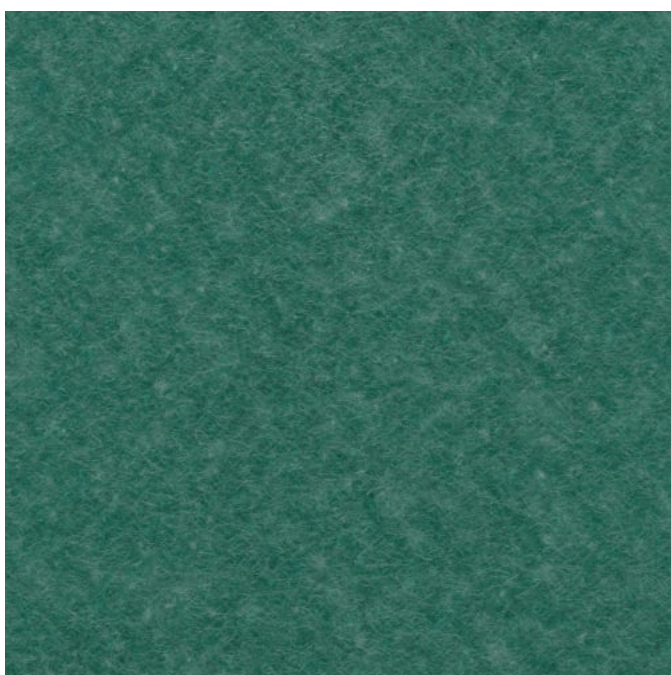
---



IVORY/MILKY



LINEN/CREAM



MALACHITE



MANDARIN/ORANGE

# ZINTRA 12MM ACOUSTIC PANEL

Acoustics » Acoustic Panels

---



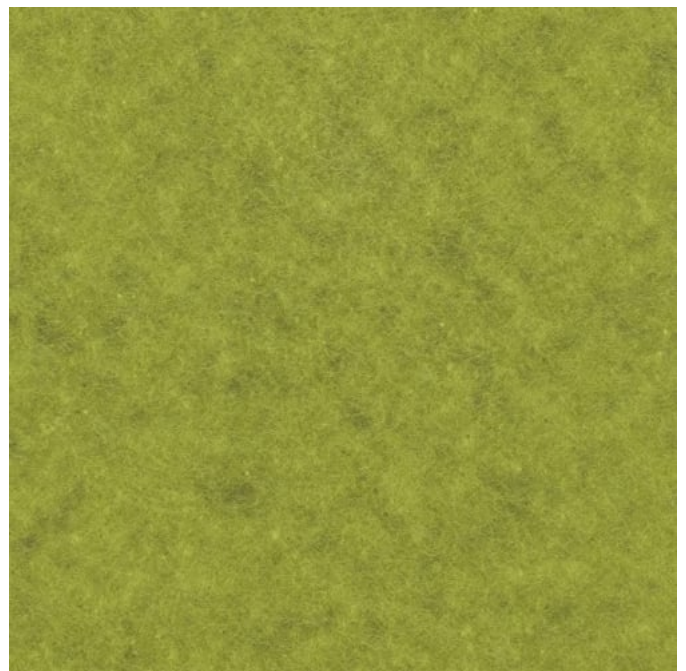
MEADOW



MIDNIGHT



OCHRE/BLUSH



OLIVE

# ZINTRA 12MM ACOUSTIC PANEL

Acoustics » Acoustic Panels

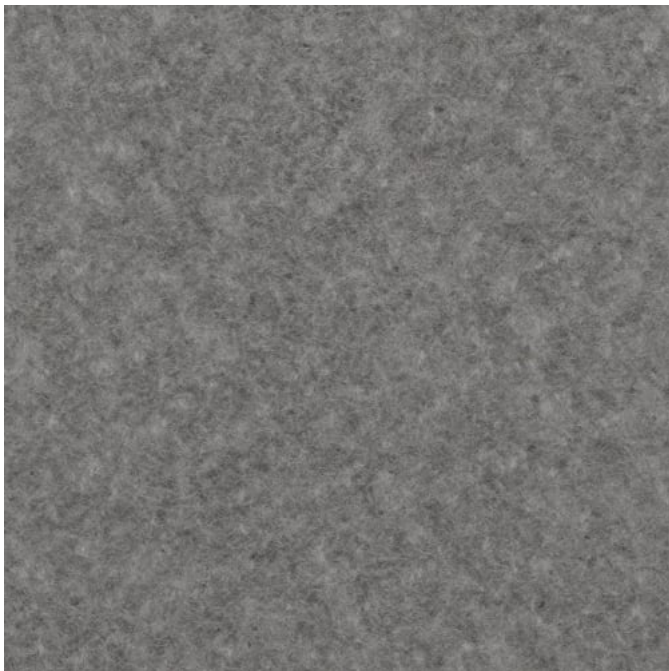
---



PARCHMENT



PEBBLE



PEWTER/GREY



SAFFRON

# ZINTRA 12MM ACOUSTIC PANEL

Acoustics » Acoustic Panels

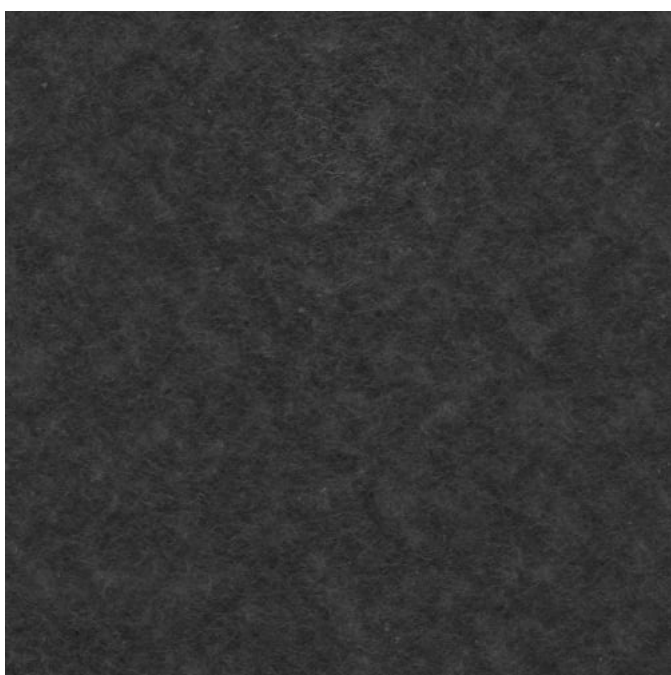
---



STORM



SKY/BLUE



SLATE/ASH



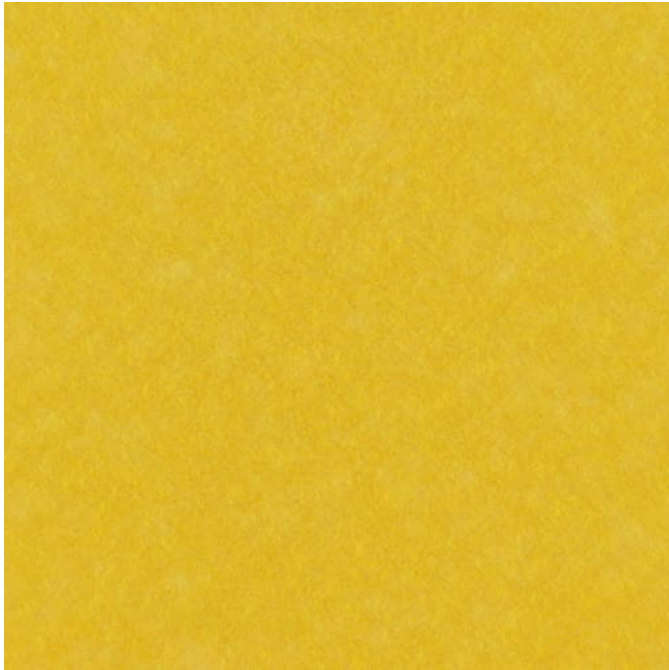
SMOKE/SILVER



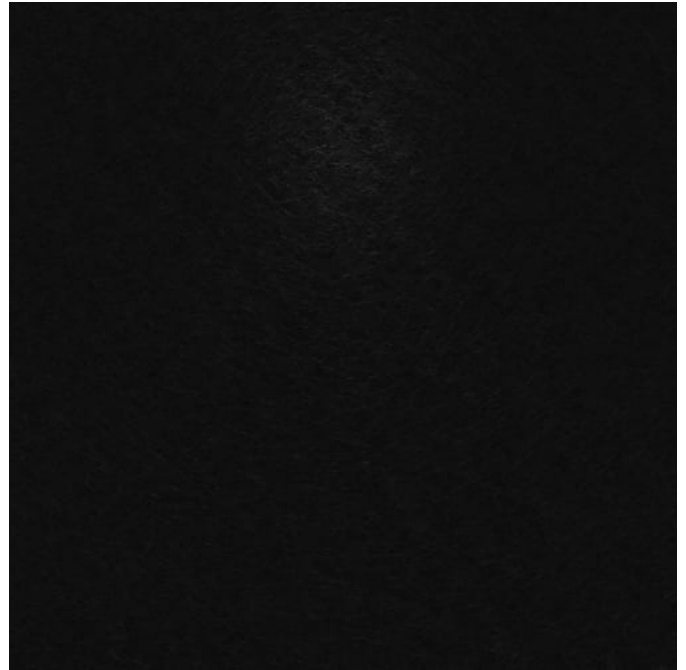
# ZINTRA 12MM ACOUSTIC PANEL

Acoustics » Acoustic Panels

---



SUNSHINE/YELLOW



TAR/BLACK



TWILIGHT

# ZINTRA 12MM ACOUSTIC PANEL

Acoustics » Acoustic Panels

Zintra Acoustic Panel is the perfect solution for your application where acoustic performance and aesthetics are required. Available in 30 colours.

- ✓ Absorbs Noise
- ✓ Bleach Cleanable
- ✓ Environmentally Friendly
- ✓ Extended Warranty
- ✓ Solution Dyed Yarns
- ✓ Easy Fabrication
- ✓ Easy Install

**Description**

Baresque's Zintra Acoustic Panel is the perfect solution for your application where acoustic performance as well as aesthetics are required.

Zintra's wide range of colours and ease of use make it the ideal material for commercial, hospitality and institutional projects.

Zintra Acoustic Panel features include:

- Cost effective sound solution
- NRC = 0.45 for 12mm
- 2800mm long sheets ideal for join-free floor to ceiling applications
- Broad range of neutral and bright colours
- Suitable for a multitude of applications - walls, ceilings, screens
- Easily fabricated and installed
- Pinnable Find out more about the Benefits of Zintra on the [DOWNLOAD](#) tab.

**Dimensions** 2800mm x 1225mm x 12mm

**Composition** Zintra Acoustic Panel - 100% Solution Dyed (Colour Through) Polyester. 2.4 kg/m<sup>2</sup>

**Finishes** Matt

**Environmental Info** Easily recycled through standard recycling channels

**Fire Rating** Tested in accordance with AS ISO 9705 2003 for the purpose of determining the Group Number classification required by the Building Code of Australia for the control of fire spread on interior wall and ceiling linings.

Classification - Group 1  
Specific Extinction - Less than 250m<sup>2</sup>/kg

**Warranty** 5-year warranty. Visit [baresque.com.au/warranty](https://www.baresque.com.au/warranty) for complete details.

# ZINTRA 12MM ACOUSTIC PANEL

Acoustics » Acoustic Panels

---

Lead Time	<ul style="list-style-type: none"><li>• Held in stock in Australia. From receipt of full payment:</li><li>• Sydney, Melbourne, Brisbane: 3 working days</li><li>• Adelaide: 4 working days</li><li>• Perth: 5-working days</li></ul>
-----------	--

---

Suggested Installation	<p>Be sure to support the panel during installation to avoid bowing or creasing.</p> <p>Adhere to substrate using contact adhesive, Liquid Nails or Z clips.</p> <p>Panel can also be mechanically fixed using details similar to glass fittings.</p> <p>Download the Handling and Installation guide for full instructions.</p>
------------------------	--

---

Fabrication Techniques	Stanley knife and straight edge
------------------------	---------------------------------

---

How to Specify	Colour
----------------	--------

---

Care Instructions	<p>Vacuum to remove dust.</p> <p>Dab Zintra with a damp clean cloth and mild solution of liquid detergent and warm water. Repeat using only clean water, then pat dry with a lint free cloth.</p> <p>For difficult stains, use a solution of household bleach (10% bleach / 90% water). To remove the bleach, repeat using a clean, water dampened cloth, then pat dry.</p> <p>Always test in an inconspicuous area first and if you don't see the expected results, contact us.</p>
-------------------	--

---

Customisable	The Zintra Acoustic Solutions range is customisable to your project. Please get in touch with your local contact for details.
--------------	---

---

Additional Comments	NRC - 0.45 - 0.9 Indoor only. Not suitable as a free standing product.
---------------------	--

---

# ZINTRA 12MM ACOUSTIC PANEL

**Acoustics** » Acoustic Panels

---

## Colour & Finish Options