

CONNECT CUBIX

Acoustics » Acoustic Baffles



Brand: **Zintra**

Collections: **Connect Baffles**

Applications: **Ceilings**

CONNECT CUBIX

Acoustics » Acoustic Baffles



Connect Baffle Cubix Detail

CONNECT CUBIX

Acoustics » Acoustic Baffles

Add sculptural on-trend geo-accents to your ceiling space with Connect Cubix Baffles. Designed for full ceiling coverage.

✓ Acoustic

✓ Bleach Cleanable

✓ Easy Clean

✓ Easy Install

Description

Add sculptural on-trend geo-accents to your ceiling space with Connect Baffles. An innovative solution to large areas requiring improved acoustics, Connect Baffle options are designed with full ceiling coverage in mind and will create a ceiling space with architectural shape, form and definitive character. **Connect Cubix** features a grid of interconnected squares, creating a visually dynamic and orderly design. This pattern brings a sense of structure and balance to interior spaces.

Connect Baffles are also available in 4 other great designs:

Cirrus is characterized by a linear, interconnected design, arranged in a flowing, cohesive formation. This pattern adds a sense of movement and unity to interior spaces.

Hive showcases a network of interconnected hexagons, offering a visually striking and cohesive design. This pattern introduces a sense of symmetry and harmony to interior spaces.

Prismatic features a collection of interconnected triangles, presenting a visually captivating and harmonious design. This pattern introduces a sense of structure and balance to interior spaces.

Rise showcases a combination of interconnected geometric shapes, including small rectangles and larger, randomized forms. This captivating design adds visual interest and complexity to interior spaces.

Composition

Zintra Acoustic Panel - 100% Solution Dyed (Colour Through) Polyester

12mm (1/2") -Density 2.4 kg /m² 0.5 lb/ft²

Sustainability

Zintra is made from 100% recyclable materials.

- 60% post-consumer recycled content from PET bottles.
- 35% pre-consumer recycled content from PET chips
- 5% polylactic acid (PLA)

Dimensions

Cubix

- 18 cubes / set, 1.8m² (18.9 SF)
- 930mm (36.6") w x 1889mm (74.4") d x 120mm (4.7") h

CONNECT CUBIX

Acoustics » Acoustic Baffles

Fire Rating ASTM-E84 – Class A classification
AS ISO 9705 – 2003 – Group 1 classification
EN-13501 – B-s2-d0 classification

Supplied As Connect Cubix

- 18 Connect Connectors
- 1 x each Hanger Bolt, Adjustable Fastener, Cable with swage end and barrel.

Fabrication Techniques Stanley knife and straight edge

Assembly & Delivery **Connect Baffles are supplied flat pack.**

Assembled your Connect Baffle then suspended from the ceiling using hanging hardware supplied.

Recommended 2 People assembly

Go to the Technical Documents and download the Installation Guide for more details.

Suggested Installation Go to Technical Documents and download the Installation Guide for more details.

Care Instructions Vacuum to remove dust.

Dab Zintra with a damp clean cloth and mild solution of liquid detergent and warm water. Repeat using only clean water, then pat dry with a lint free cloth.

For difficult stains, use a solution of household bleach (10% bleach / 90% water). To remove the bleach, repeat using a clean, water dampened cloth, then pat dry.

Always test in an inconspicuous area first and if you don't see the expected results, contact us.

Warranty Visit FAQ for more details.

Customisable The Zintra Acoustic Solutions range is customisable to your project. Please get in touch with your local contact for details.

CONNECT CUBIX

Acoustics » Acoustic Baffles

Additional Comments NRC Rating

- Without Air Gap: Up to 0.90
 - With 24" (610mm) Air Gap: Up to 0.95
-

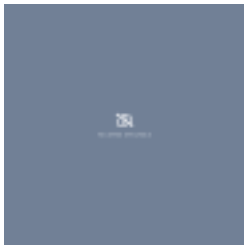
How to Specify

1. Select Design
 2. **Select** Size
 3. Select Zintra Colour
-

CONNECT CUBIX

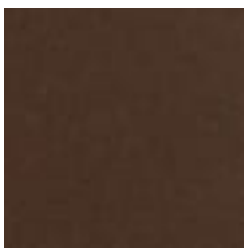
Acoustics » Acoustic Baffles

Colour & Finish Options

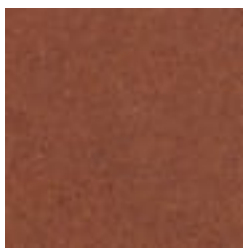


EMPTY VARIANT

Zintra 12mm Solid PET



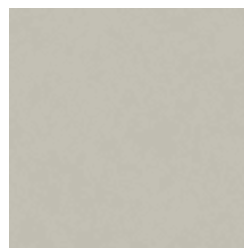
Bark



Brick



Cadet



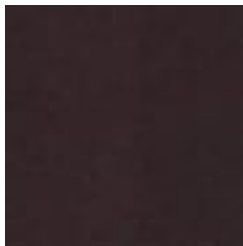
Chambray



Cobalt



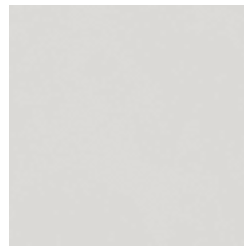
Ecru



Elderberry



Fossil



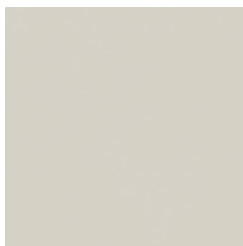
Frost



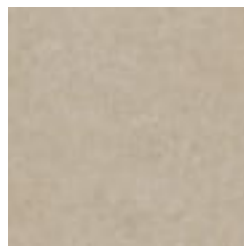
Grass



Greige



Ivory



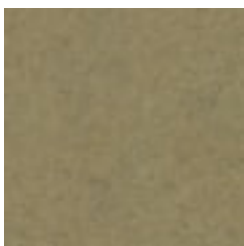
Linen



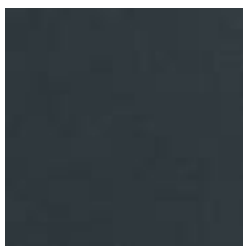
Malachite



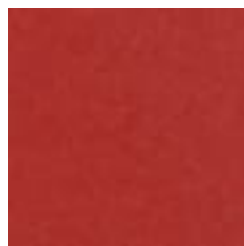
Mandarin



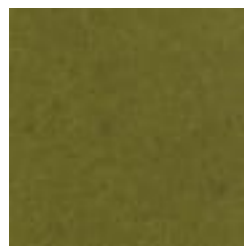
Meadow



Midnight



Ochre



Olive



Parchment

CONNECT CUBIX

Acoustics » Acoustic Baffles



Pebble



Pewter



Saffron



Sky



Smoke



Slate



Storm



Sunshine



Tar



Twilight

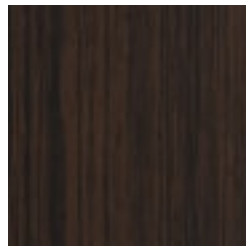
Zintra Timber Print



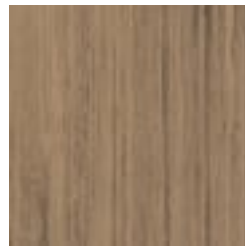
Eucalyptus



Ironbark



Merbau



Spotted Gum