

# CONNECT RISE

Acoustics » Acoustic Baffles



Brand: **Zintra**

Collection: **Connect Baffles**

1300 306 399

[info@baresque.com.au](mailto:info@baresque.com.au)

[baresque.com.au](http://baresque.com.au)

1 of 7

# CONNECT RISE

Acoustics » Acoustic Baffles

---



CONNECT RISE



Baffle Connect Rise  
Low Tar



Baffle Connect Rise  
High



Baffles Connect Rise  
Detail in Cadet

# CONNECT RISE

Acoustics » Acoustic Baffles

Add sculptural on-trend geo-accent to your ceiling space with Connect Rise Baffles. Designed for full ceiling coverage.

✓ Acoustic

✓ Bleach Cleanable

✓ Easy Clean

✓ Easy Install

## Description

Add sculptural on-trend geo-accent to your ceiling space with Connect Baffles. An innovative solution to large areas requiring improved acoustics, Connect Baffle options are designed with full ceiling coverage in mind and will create a ceiling space with architectural shape, form and definitive character. **Connect Rise** showcases a combination of interconnected geometric shapes, including small rectangles and larger, randomized forms. This captivating design adds visual interest and complexity to interior spaces.

Connect Baffles are also available in 4 other great designs:

**Cirrus** is characterized by a linear, interconnected design, arranged in a flowing, cohesive formation. This pattern adds a sense of movement and unity to interior spaces.

**Cubix** features a grid of interconnected squares, creating a visually dynamic and orderly design. This pattern brings a sense of structure and balance to interior spaces.

**Hive** showcases a network of interconnected hexagons, offering a visually striking and cohesive design. This pattern introduces a sense of symmetry and harmony to interior spaces.

**Prismatic** features a collection of interconnected triangles, presenting a visually captivating and harmonious design. This pattern introduces a sense of structure and balance to interior spaces.

## Dimensions

RISE LOW - 2770mm x 1220mm x 220mm RISE HIGH - 2770mm x 1220mm x 260mm

## Composition

Zintra Acoustic Panel - 100% Solution Dyed (Colour Through) Polyester. 2.3 kg/m<sup>2</sup>

## Sustainability

- Zintra is made from 100% recyclable materials.
- 60% post-consumer recycled content from PET bottles.
- 35% pre-consumer recycled content from PET chips
- 5% polylactic acid (PLA)

## Environmental Info

Easily recycled through standard recycling channels

# CONNECT RISE

Acoustics » Acoustic Baffles

---

**Fire Rating**                    ASTM-E84 – Class A classification  
AS ISO 9705 – 2003 – Group 1 classification  
EN-13501 – B-s2-d0 classification

---

**Warranty**                      Visit FAQ for more details.

---

**Assembly & Delivery**        **Connect Baffles are supplied flat pack.**

Assembled your Connect Baffle then suspended from the ceiling using hanging hardware supplied.

Recommended 2 People assembly

Go to the Technical Documents and download the Installation Guide for more details.

---

**Supplied As**                    Connect Rise

- 6 x Adjustable Suspension Kit (ASK)
- 6 x S-Hooks

---

**Suggested Installation**        Go to Technical Documents and download the Installation Guide for more details.

---

**Fabrication Techniques**        Stanley knife and straight edge

---

**How to Specify**                1. Select Design

    2. Select Size

    3. Select Zintra Colour

---

**Care Instructions**              Vacuum to remove dust.

Dab Zintra with a damp clean cloth and mild solution of liquid detergent and warm water. Repeat using only clean water, then pat dry with a lint free cloth.

For difficult stains, use a solution of household bleach (10% bleach / 90% water). To remove the bleach, repeat using a clean, water dampened cloth, then pat dry.

Always test in an inconspicuous area first and if you don't see the expected results, contact us.

---

# CONNECT RISE

Acoustics » Acoustic Baffles

---

## Customisable

The Zintra Acoustic Solutions range is customisable to your project. Please get in touch with your local contact for details.

---

## Additional Comments

### NRC Rating

- Without Air Gap: Up to 0.90
  - With 24" (610mm) Air Gap: Up to 0.95
-

# CONNECT RISE

Acoustics » Acoustic Baffles

## Colour & Finish Options

Zintra 12mm Solid PET



Bark



Brick



Cadet



Chambray



Cobalt



Ecru



Elderberry



Fossil



Frost



Grass



Greige



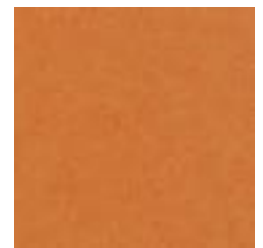
Ivory



Linen



Malachite



Mandarin



Meadow



Midnight



Ochre



Olive



Parchment



Pebble



Pewter



Saffron



Sky



Smoke

# CONNECT RISE

Acoustics » Acoustic Baffles

---



Slate



Storm



Sunshine



Tar



Twilight

## Zintra Timber Print



Eucalyptus



Ironbark



Merbau



Spotted Gum