

ALAMO

Fabrics » Vinyl and Faux Leather Fabrics



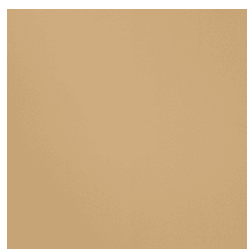
Brand: **CF Stinson**

ALAMO

Fabrics » Vinyl and Faux Leather Fabrics

COLOURWAY CARD

COLOURWAY CARD



ALM 10 NOMAD



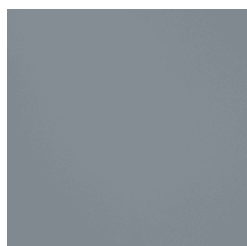
ALM 11 GATE



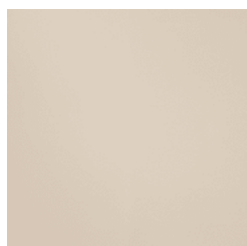
ALM 12 TINSEL



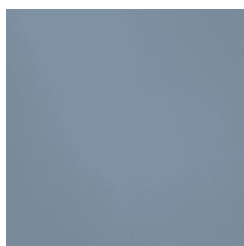
ALM 13 ACORN



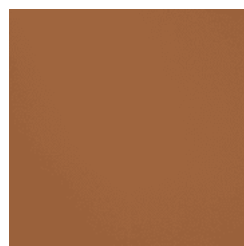
ALM 14 MARLIN



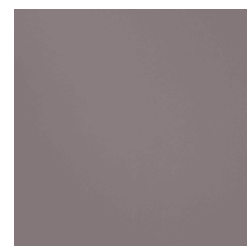
ALM 15 PUTTY



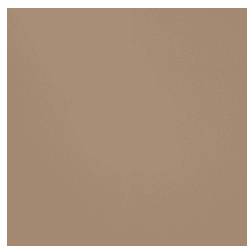
ALM 16 BLUE MOON



ALM 17 CLAY



ALM 18 SPUR



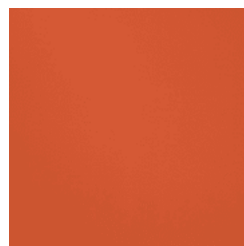
ALM 19 MOREL



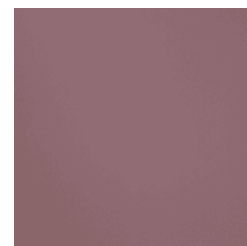
ALM 20 SKYE



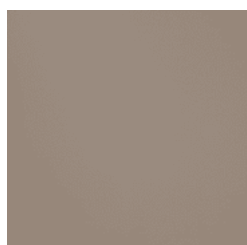
ALM 21 LEMONGRASS



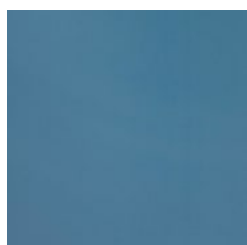
ALM 22 SIENNA



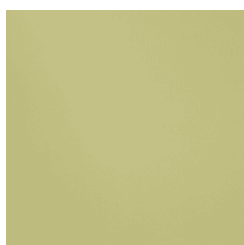
ALM 23 MULBERRY



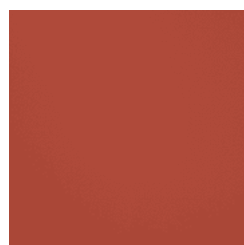
ALM 24 CLIFF



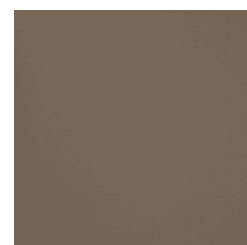
ALM 25 NEPTUNE



ALM 26 SPRING



ALM 27 LOUNGE



ALM 28 BRANCH



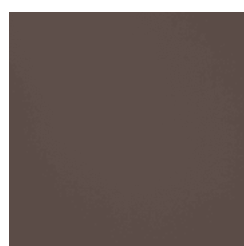
ALM 29 NORI



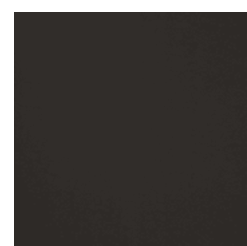
ALM 30 WAVE



ALM 31 MEADOW



ALM 32 JAVA



ALM 33 CROW

ALAMO

Fabrics » Vinyl and Faux Leather Fabrics



ALM 34 NAVY



ALM 35 DEEP TEAL

ALAMO

Fabrics » Vinyl and Faux Leather Fabrics

Alamo is a leather upholstery high performance vinyl that's available in 26 colours

✓ **Bleach Cleanable**

✓ **Moisture Barrier**

Roll Size 137cm wide x 27.4m - Available by the lineal metre

Composition Non-Phthalate Vinyl Surface with Polyester Backing.

Abrasion 100,000 + double rubs Wyzenbeek

Finishes Advanced Soil and Stain Resistant Top Coat.

Sustainability

- Greenguard Certified
- Reach Compliant
- RoHS Compliant
- No PFAS, fluorocarbons or perfluorinated compounds
- No added flame retardants
- No added antimicrobials
- Does not contain formaldehyde
- Formulated without Phthalates

Environmental Info

Greenguard Certifications contributes towards LEED credits for low-emitting furniture.

Compliant with Business and Institutional Furniture Manufacturers Association (BIFMA) X7.1 standard and BIFMA e3 credit 7.6.1.

Fire Rating

Tested in accordance with AS1530.3

Spread of Flame Index - 0

Smoke Developed Index - 5

Warranty

2-year warranty. Visit baresque.com.au/warranty for complete details.

ALAMO

Fabrics » Vinyl and Faux Leather Fabrics

Lead Time

- 2-weeks (approx.) from Wednesday, subject to stock availability.
 - Additional 1-week for Western Australia.
 - Express delivery is available subject to a surcharge. Contact Baresque for details and pricing.
-

Care Instructions

Use cloth with any of the following in preferred order of use:

- 1: Clear warm water
- 2: Mild solution of liquid detergent and warm water
- 3: Isopropyl Alcohol (a.k.a. rubbing alcohol)

Remove any detergent with a clean, damp cloth. Gently pat dry.

For more difficult stains, dampen a soft white cloth with a solution of household bleach (10% bleach / 90% water). Rub gently. Rinse with a water dampened cloth to remove bleach concentration.

Do not use solvent based or concentrated abrasive cleaning agents, lacquer thinners or nail polish remover as these may cause discolouration over a period of time.

Always test in an inconspicuous area first.

If care instructions don't deliver the expected results, cease cleaning method immediately and contact Baresque for assistance.

ALAMO

Fabrics » Vinyl and Faux Leather Fabrics

Colour & Finish Options