

# BOX CHAIN

Fabrics » Vinyl and Faux Leather Fabrics



Brand: **CF Stinson**

Applications: **Upholstery**

1300 306 399

[info@baresque.com.au](mailto:info@baresque.com.au)

[baresque.com.au](http://baresque.com.au)

1 of 5

# BOX CHAIN

Fabrics » Vinyl and Faux Leather Fabrics

---



box-chain-bxc66-  
beluga.jpg

# BOX CHAIN

Fabrics » Vinyl and Faux Leather Fabrics

Box Chain is a 137cm wide coated fabric with a plain pattern and a high-performance vinyl designed for durability that's available in 17 colours

✓ **Bleach Cleanable**

✓ **Moisture Barrier**

**Composition** Vinyl with polyester backing

**Environmental Info** Greenguard Certifications contributes towards LEED credits for low-emitting furniture.  
Compliant with Business and Institutional Furniture Manufacturers Association (BIFMA) X7.1 standard and BIFMA e3 credit 7.6.1.

**Pattern Repeat Size** N/A

**Roll Size** 137cm x Approx 55m - Available by the lineal metre

**Abrasion** 100,000 + double rubs Wyzenbeek

**Fire Rating** Tested in accordance with AS1530.3  
Spread of Flame Index - 0  
Smoke Developed Index - 5

**Lead Time**

- 2-weeks (approx.) from Wednesday, subject to stock availability.
- Additional 1-week for Western Australia.
- Express delivery is available subject to a surcharge. Contact Baresque for details and pricing.

# BOX CHAIN

Fabrics » Vinyl and Faux Leather Fabrics

---

## Care Instructions

Use cloth with any of the following in preferred order of use:

1: Clear warm water

2: Mild solution of liquid detergent and warm water

3: Isopropyl Alcohol (a.k.a. rubbing alcohol)

Remove any detergent with a clean, damp cloth. Gently pat dry.

For more difficult stains, dampen a soft white cloth with a solution of household bleach (10% bleach / 90% water). Rub gently. Rinse with a water dampened cloth to remove bleach concentration.

Do not use solvent based or concentrated abrasive cleaning agents, lacquer thinners or nail polish remover as these may cause discolouration over a period of time.

Always test in an inconspicuous area first.

If care instructions don't deliver the expected results, cease cleaning method immediately and contact Baresque for assistance.

---

## Warranty

2-year warranty. Visit [baresque.com.au/warranty](https://baresque.com.au/warranty) for complete details.

---

# BOX CHAIN

Fabrics » Vinyl and Faux Leather Fabrics

## Colour & Finish Options

### COLOURWAY CARD



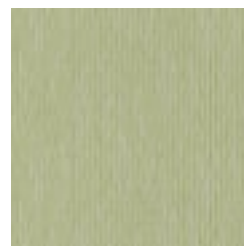
BXC 50 IONIC



BXC 51 FROST



BXC 52 STUCCO



BXC 53 POMELO



BXC 54 DAYBREAK



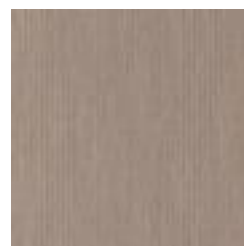
BXC 55 TWINE



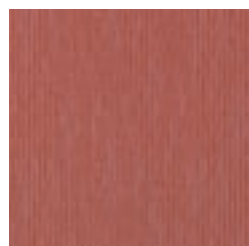
BXC 56 JUNIPER



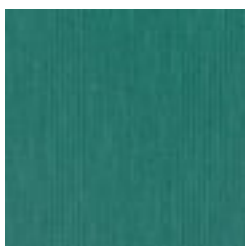
BXC 57 TRANQUIL



BXC 58 ANTELOPE



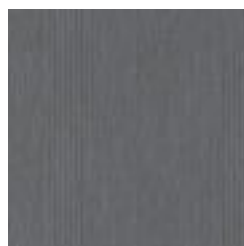
BXC 59 ROSE



BXC 60 BERMUDA



BXC 61 AMALFI



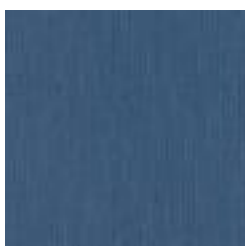
BXC 62 STARDUST



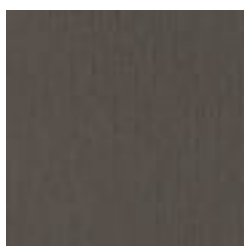
BXC 63 PLUM



BXC 64 EVERGREEN



BXC 65 MARINE



BXC 66 BELUGA