

# ROUTE

Fabrics » Vinyl and Faux Leather Fabrics



Brand: **CF Stinson**

# ROUTE

Fabrics » Vinyl and Faux Leather Fabrics

---



ROU 50 STUCCO



ROU 51 ICE



ROU 52 STONE



ROU 53 SEASIDE



ROU 54 ANTIQUE



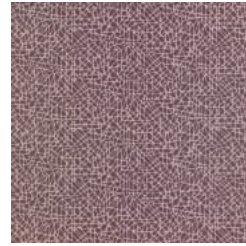
ROU 55 JASPER



ROU 56 MEADOW



ROU 57 CHAMOIS



ROU 58 TEA ROSE



ROU 59 DEEP SEA



ROU 60 EARTH



ROU 61 BLACKBERRY

# ROUTE

Fabrics » Vinyl and Faux Leather Fabrics

Route is a 137cm wide vinyl coated fabric that's available in 12 colours ideal for indoor use. Bleach cleanable.

✓ **Bleach Cleanable**

✓ **Moisture Barrier**

Description	A visual representation of the patterns created by city streets from above
Roll Size	137cm wide X 36.5m- Available by the lineal metre.
Composition	Vinyl face on a knitted polyester backing
Abrasion	Exceeds 1,300,000 double rubs (Wyzenbeek)
Pattern Repeat Size	22cm V / 63.5cm H
Environmental Info	Greenguard Certifications contributes towards LEED credits for low-emitting furniture.  Compliant with Business and Institutional Furniture Manufacturers Association (BIFMA) X7.1 standard and BIFMA e3 credit 7.6.1.
Fire Rating	Tested in accordance with AS1530.3  Spread of Flame Index - 0  Smoke Developed Index - 5
Warranty	2-year warranty. Visit <a href="https://www.baresque.com.au/warranty">baresque.com.au/warranty</a> for complete details.
Lead Time	<ul style="list-style-type: none"><li>• 2-weeks (approx.) from Wednesday, subject to stock availability.</li><li>• Additional 1-week for Western Australia.</li><li>• Express delivery is available subject to a surcharge. Contact Baresque for details and pricing.</li></ul>

# ROUTE

Fabrics » Vinyl and Faux Leather Fabrics

---

## Care Instructions

Use cloth with any of the following in preferred order of use:

1: Clear warm water

2: Mild solution of liquid detergent and warm water

3: Isopropyl Alcohol (a.k.a. rubbing alcohol)

Remove any detergent with a clean, damp cloth. Gently pat dry.

For more difficult stains, dampen a soft white cloth with a solution of household bleach (10% bleach / 90% water). Rub gently. Rinse with a water dampened cloth to remove bleach concentration.

Do not use solvent based or concentrated abrasive cleaning agents, lacquer thinners or nail polish remover as these may cause discolouration over a period of time.

Always test in an inconspicuous area first.

If care instructions don't deliver the expected results, cease cleaning method immediately and contact Baresque for assistance.

---

# ROUTE

**Fabrics** » Vinyl and Faux Leather Fabrics

---

## Colour & Finish Options