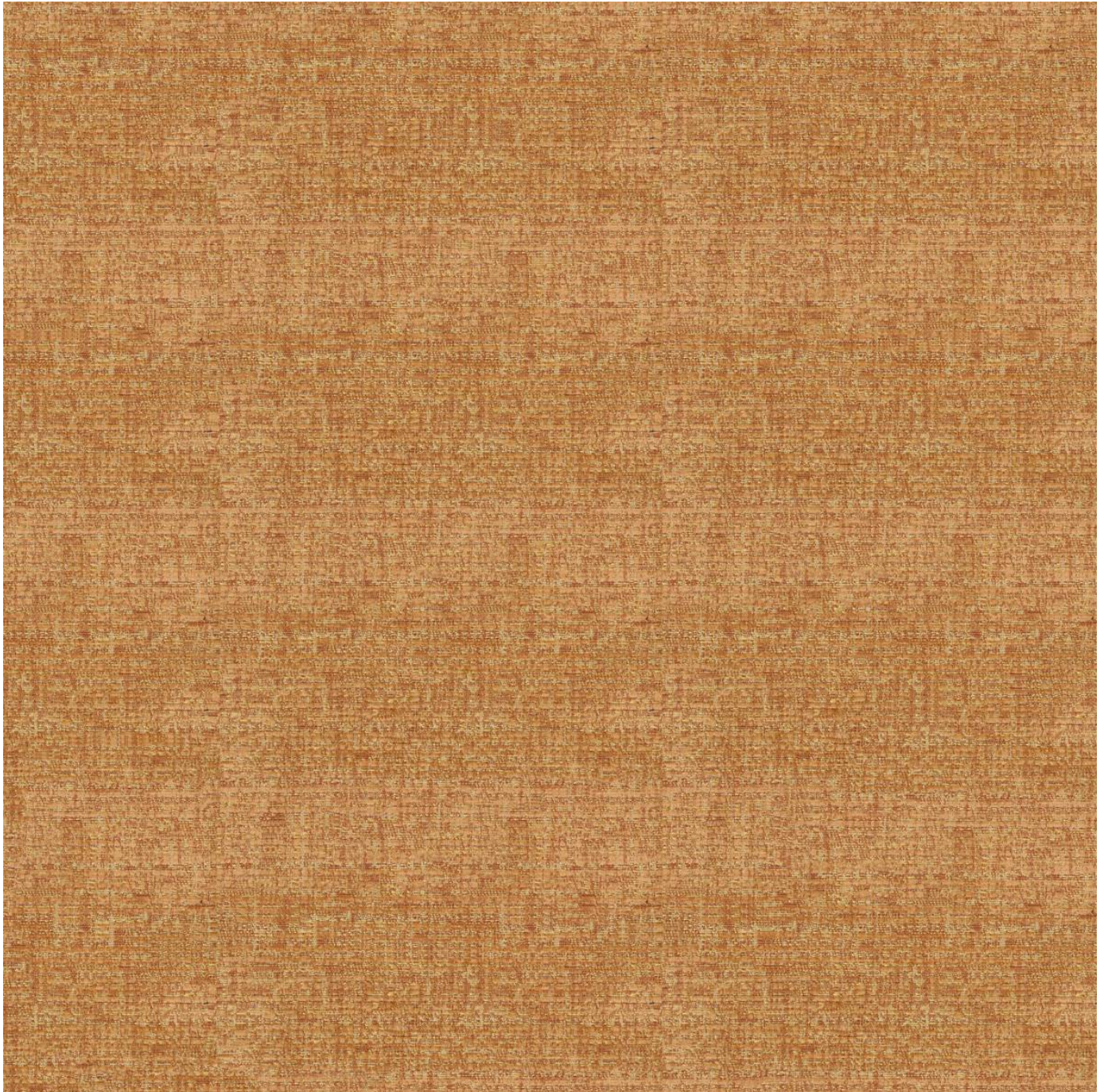


ENDUREPEL JEFFERY FUNDAMENTALS

Fabrics » Woven Fabrics



Brand: **Endurepel**

ENDUREPEL JEFFERY FUNDAMENTALS

Fabrics » Woven Fabrics



67 COSMIC



602 CORNSILK



608 BEIGE



3006 DENIM



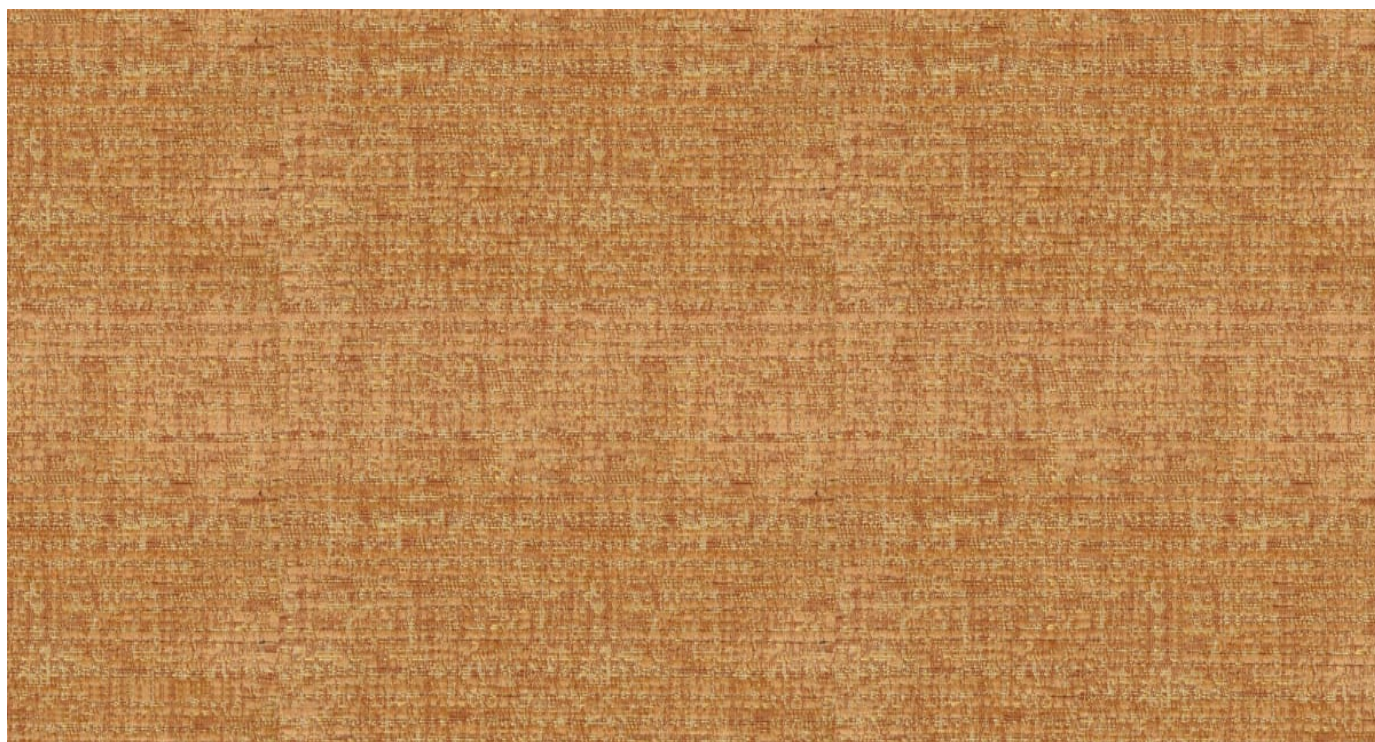
9003 GAINSBORO



9006 BATTLESHIP
GREY

ENDUREPEL JEFFERY FUNDAMENTALS

Fabrics » Woven Fabrics



Jeffery is finished with Endurepel Shield, easy clean finish. The multi-tone colours and chenille yarn provides texture and depth across 7 colourways.

● Moisture Repellant

● Anti-Bacterial

● Anti-Microbial

Description	The Fundamentals range features 75 coordinating textures and semi-plains that come standard with Endurepel Shield performance finish to repel liquid and make the upholsteries anti-microbial and anti-bacterial. Add Endurepel Barrier for a complete moisture barrier.
Roll Size	144cm x Approx 45m - 55m - Available by the lineal metre.
Composition	Endurepel Shield - 100% polyester with an acrylic kiss coat backing Add Endurepel Barrier for a complete moisture barrier.
Abrasion	80,000+ Double Rubs (Wyzenbeek)
Pattern Repeat Size	N/A
Fire Rating	Tested in accordance with AS1530.3 Spread of Flame Index - 0 Smoke Developed Index - 4

ENDUREPEL JEFFERY FUNDAMENTALS

Fabrics » Woven Fabrics

Warranty	2-year warranty. Visit baresque.com.au/warranty for complete details.
Lead Time	<ul style="list-style-type: none">• 3-weeks (approx) from Wednesday subject to stock availability.• Additional 1-week for Western Australia.• Additional 2 weeks for Endurepel Barrier.• Express delivery is available subject to a surcharge. Contact Baresque for details and pricing.
Care Instructions	<p>Always use a clean, white, soft cloth.</p> <p>Clean in situ using a damp cloth and mild detergent. Sponge down afterwards with a clean, damp cloth.</p> <p>Using a cloth to pat dry will help eliminate watermarks.</p> <p>Ensure the pile is brushed back to its natural direction.</p> <p>Upholstered furniture should be regularly vacuumed or brushed with a soft nylon brush to remove grit or dust, which may damage the pile.</p> <p>Never use stiff bristles or wire brushes, as they may damage the fabric.</p> <p>Always test in an inconspicuous area first. If care instructions don't deliver the expected results, cease cleaning method immediately and contact Baresque for assistance.</p>
Additional Comments	Add Endurepel Barrier for full Moisture Barrier