

SAHARA STONE

Wallcoverings » Advanced Wall Protection



Brand: **P3tec**

Applications: **Walls**

1300 306 399

info@baresque.com.au

baresque.com.au

1 of 4

SAHARA STONE

Wallcoverings » Advanced Wall Protection

Sahara Stone is a 137cm wide wall protection with a silk look that's available in 8 colours. It's resistant to impact, chemical and abrasion.

- ✓ Bleach Cleanable
- ✓ Easy Clean
- ✓ Extended Warranty
- ✓ Extreme Durability
- ✓ High Stain Resistance
- ✓ Ultra Performance

Description Check out the videos to see for yourself how Advanced Wall Protection performs - [Impact](#), [Abrasion](#), [Cleanability](#) - or check out the brochure in the [DOWNLOADS](#). The technical innovation of P3TEC is a beautiful wall protection collection with three key advantages - High Performance, Easy to Use, Beautiful Design. Bring the look of silk, linen and wovens to high traffic, high abuse areas in healthcare, food service, transportation and more.

Composition Extra thick vinyl face on a heavy polyester / cotton knit fabric backing

Environmental Info

- Formaldehyde free
- Heavy metals free
- Perfluorooctanoic acid free
- No solvent inks
- Low VOC emissions. Any VOCs dissipate quickly (faster than paint) through normal ventilation and have no recognized adverse impact on indoor air quality.
- Durability means products do not need to be replaced regularly due to wear and tear and being cleanable, vinyl products are ideal for helping keep commercial environments clean of bacteria.
- Baresque will only deal with vinyl manufacturers that comply with applicable state and federal regulations, provide a factory that is safe and clean for its employees to work in, recycle scrap and inks during the manufacturing process to minimize waste related to production.

Pattern Repeat Size N/A

Roll Size 137cm. Trims to 122cm x 13.7m Available by the FULL ROLL ONLY

Fire Rating Tested in accordance with AS ISO 9705 2003 for the purpose of determining the Group Number classification as required by the Building Code of Australia for the control of fire spread on interior wall and ceiling linings.

The result achieved was:
Classification - Group 2
Specific Extinction - Less than 250m²/kg

SAHARA STONE

Wallcoverings » Advanced Wall Protection

- Lead Time**
- 2-weeks (approx.) from Wednesday, subject to stock availability.
 - Additional 1-week for Western Australia.
 - Express delivery is available subject to a surcharge. Contact Baresque for details and pricing.
-

Suggested Installation

Reverse hang alternate drops/overlap and double cut.

Advanced Wall Protection requires a specific installation method and we strongly recommend you use one of our recommended installers.

Download the Installation Instructions for details.

Baresque recommends and supply Roman brand adhesives and primers.

- Care Instructions**
1. Completion:
- Immediately upon completion of installation, installer shall make sure that these products are cleaned and free of any layout marks, excess adhesive or surface blemishes. Remove excess adhesive with methods and materials recommended by the adhesive manufacturer.
2. Clean-Up and Routine Maintenance:
- Rigid Profiles: For general cleaning, use disinfectant cleaner.
- All Purpose Cleaner Heavy Duty: Use a clean, lint-free cloth and wipe clean. Do not use any abrasive cleaning cloths or sponges.
1. Spray products onto profile and wipe with a dampened cloth.
2. Repeat process if stain remains. If cleaning product residue remains, rinse with water.
-

Warranty

5-year warranty. Visit [baresque.com.au/warranty](https://www.baresque.com.au/warranty) for complete details.

SAHARA STONE

Wallcoverings » Advanced Wall Protection

Colour & Finish Options



P3T-60310 TAZA
BEDROCK



P3T-60311
TAROUDANT SLAB



P3T-60312 ROYAL
ALABASTER



P3T-60313 PEBBLE
ALLEYWAY



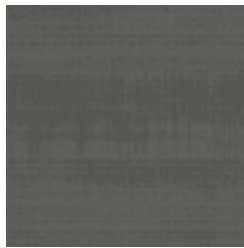
P3T-60314 WHITE
QUARTZ



P3T-60315 SALE
GRAVEL



P3T-60316 RAMADY
PUMICE



P3T-60317
MOROCCAN SLATE