

AVENIR

Wallcoverings » Commercial Wallcoverings



Brand: **Versa**

AVENIR

Wallcoverings » Commercial Wallcoverings

COLOURWAY CARD

COLOURWAY CARD



A204-016 FROST



A204-131
CHAMPAGNE



A204-251 EMERALD



A204-323 BLUE
MOON (MYLAR)



A204-519 SUMMIT
(MYLAR)



A204-522 TWILIGHT
(MYLAR)



A204-525 STEEL



A204-539
QUICKSILVER



A204-543 CHESTNUT



A204-567 QUARTZ



A204-581 SHALE
(MYLAR)



A204-720 CITRINE



A204-775 GOLD
(MYLAR)



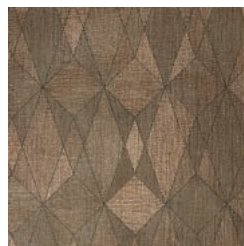
A204-323 BLUE
MOON-MYLAR



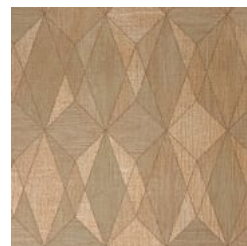
A204-519 SUMMIT-
MYLAR



A204-522 TWILIGHT-
MYLAR



A204-581 SHALE-
MYLAR



A204-775 GOLD
MYLAR



avenir-promo-2.jpg



avenir-promo-3.jpg

AVENIR

Wallcoverings » Commercial Wallcoverings

Avenir is a 137cm wide wallcovering with a refined etheric geometric tapestry available in 13 colours. Bleach cleanable, moisture and mold resistant

✓ **Bleach Cleanable**

Description Avenir showcases a refined and etheric geometric tapestry that was designed with meticulous attention to detail. The multi-finish palette consists of neutrals alongside romantic colour combinations that fall over subtle shimmering metallic backdrops. Utilizing mylar as a ground choice amp up the reflective characteristics for 5 of the colourways. Features + Benefits * Bleach cleanable * 13 Colourways * Phthalate free * Moisture, mold and mildew resistant

Roll Size 132/137cm x 27.4m - Available by the lineal metre.

Composition Vinyl face on a fabric backing 20oz (452 g/m²)

Pattern Repeat Size Align 'diamond to diamond' every 7.7cm

Environmental Info

- Formaldehyde free
- Heavy metals free
- Perfluorooctanoic acid free
- No solvent inks

Low VOC emissions. Any VOCs dissipate quickly (faster than paint) through normal ventilation and have no recognized adverse impact on indoor air quality.

Durability means products do not need to be replaced regularly due to wear and tear and being cleanable, vinyl products are ideal for helping keep commercial environments clean of bacteria.

Baresque will only deal with vinyl manufacturers that comply with applicable state and federal regulations, provide a factory that is safe and clean for its employees to work in, recycle scrap and inks during the manufacturing process to minimize waste related to production.

Fire Rating Tested in accordance with AS ISO 9705 2003 for the purpose of determining the Group Number classification as required by the Building Code of Australia for the control of fire spread on interior wall and ceiling linings.

The result achieved was:
Classification - Group 2
Specific Extinction - Less than 250m²/kg

Warranty 5-year warranty. Visit [baresque.com.au/warranty](https://www.baresque.com.au/warranty) for complete details.

AVENIR

Wallcoverings » Commercial Wallcoverings

Lead Time

- 2-weeks (approx.) from Wednesday, subject to stock availability.
- Additional 1-week for Western Australia.
- Express delivery is available subject to a surcharge. Contact Baresque for details and pricing.

Suggested Installation

Reverse hang / overlap and double cut.

Baresque recommends and supply Roman brand adhesives and primers.

Care Instructions

Always use a clean, white, soft cloth.

Use cloth with any of the following in preferred order of use:

- 1: Clear warm water
- 2: Mild solution of liquid detergent and warm water
- 3: Isopropyl Alcohol (a.k.a. rubbing alcohol)

Remove any detergent with a clean, damp cloth. Gently pat dry.

For more difficult stains, dampen a soft white cloth with a solution of household bleach (10% bleach / 90% water). Rub gently.

Rinse with a water dampened cloth to remove bleach concentration.

DO NOT USE solvent based or concentrated abrasive cleaning agents, lacquer thinners, nail polish remover as these may cause discolouration over a period of time.

Always test in an inconspicuous area first. If care instructions don't deliver the expected results, cease cleaning method immediately and contact Baresque for assistance.

AVENIR

Wallcoverings » Commercial Wallcoverings

Colour & Finish Options