

CITYSCAPE

Wallcoverings » Commercial Wallcoverings



Brand: **Koroseal**

Collection: **Stacy Garcia New York**

1300 306 399

info@baresque.com.au

baresque.com.au

1 of 6

CITYSCAPE

Wallcoverings » Commercial Wallcoverings

COLOURWAY CARD

COLOURWAY CARD



SG05-01 ALABASTER



SG05-02 ALUMINUM



SG05-03 CEMENT



SG05-04 STEEL



SG05-05 SILT



SG05-06 SANDSTONE



SG05-07 JADE



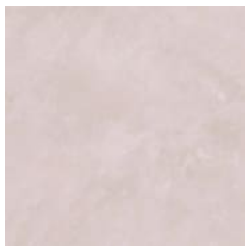
SG05-08 BLUE
KYANITE



SG05-09 QUARTZITE



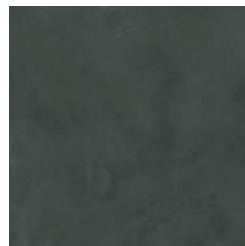
SG05-10 RIVER ROCK



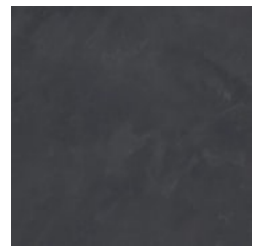
SG05-11 OPALINE



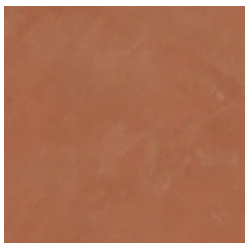
SG05-12 TRAVERTINE



SG05-13 SOAPSTONE



SG05-14 SLATE



SG05-15 CLAY



cityscape-promo-2.jpg



cityscape-promo-3.jpg

CITYSCAPE

Wallcoverings » Commercial Wallcoverings

Cityscape is a 137cm wide wallcovering with a weathered texture that brings up a natural colour variation of aged stone buildings in 15 colourways.

Description	<p>Cityscape is a beautifully weathered texture that mimics the movement and natural colour variation of aged stone buildings, making for a wallcovering that is organic yet refined. The design features 15 colourways and coordinates with Highrise, a luxe pattern design.</p> <p>Features + Benefits</p> <ul style="list-style-type: none">* Bleach cleanable* 15 Colourways* Highly durable* Anti-microbial* Low VOC
Product Code	WC.CITYSCAP
Roll Size	137cm wide x 27.4m - Available by the lineal metre
Weight	618 g.plm - 20oz.ply 451 g.psm - 13.3 oz.psy
Composition	Vinyl face on a non-woven backing
Pattern Repeat Size	N/A

CITYSCAPE

Wallcoverings » Commercial Wallcoverings

Environmental Info

Formaldehyde free

Heavy metals free

Perfluorooctanoic acid free

No solvent inks

Low VOC emissions. Any VOCs dissipate quickly (faster than paint) through normal ventilation and have no recognized adverse impact on indoor air quality.

Durability means products do not need to be replaced regularly due to wear and tear and being cleanable, vinyl products are ideal for helping keep commercial environments clean of bacteria.

Baresque will only deal with vinyl manufacturers that comply with applicable state and federal regulations, provide a factory that is safe and clean for its employees to work in, recycle scrap and inks during the manufacturing process to minimize waste related to production.

Fire Rating

Tested in accordance with AS ISO 9705 2003 for the purpose of determining the Group Number classification as required by the Building Code of Australia for the control of fire spread on interior wall and ceiling linings.

The result achieved was:

Classification - Group 2

Specific Extinction - Less than 250m²/kg

Warranty

5-year warranty. Visit [baresque.com.au/warranty](https://www.baresque.com.au/warranty) for complete details.

Lead Time

- 2-weeks (approx.) from Wednesday, subject to stock availability.
 - Additional 1-week for Western Australia.
 - Express delivery is available subject to a surcharge. Contact Baresque for details and pricing.
-

Suggested Installation

Reverse hang / overlap and double cut.

Baresque recommends and supply Roman brand adhesives and primers.

CITYSCAPE

Wallcoverings » Commercial Wallcoverings

Care Instructions

Use cloth with any of the following in preferred order of use:

1: Clear warm water

2: Mild solution of liquid detergent and warm water

3: Isopropyl Alcohol (a.k.a. rubbing alcohol)

Remove any detergent with a clean, damp cloth. Gently pat dry.

For more difficult stains, dampen a soft white cloth with a solution of household bleach (10% bleach / 90% water). Rub gently.

Rinse with a water dampened cloth to remove bleach concentration.

Do not use solvent based or concentrated abrasive cleaning agents, lacquer thinners or nail polish remover as these may cause discolouration over a period of time.

Always test in an inconspicuous area first.

If care instructions don't deliver the expected results, cease cleaning method immediately and contact Baresque for assistance.

CITYSCAPE

Wallcoverings » Commercial Wallcoverings

Colour & Finish Options