

ESPLANADE

Wallcoverings » Commercial Wallcoverings



Brand: **Koroseal**

Collection: **Stacy Garcia New York**

ESPLANADE

Wallcoverings » Commercial Wallcoverings

COLOURWAY CARD

COLOURWAY CARD



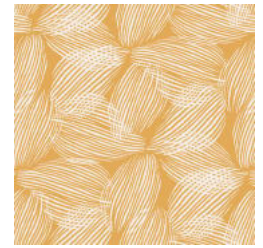
SG01-01 PAMPAS



SG01-02 MIST



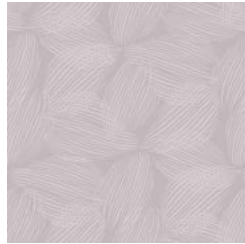
SG01-03 BLUEGRASS



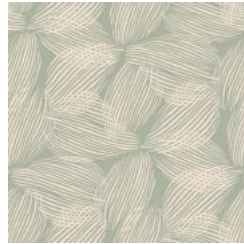
SG01-04 GOLDENROD



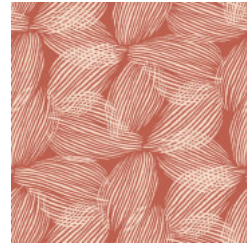
SG01-05 CONCRETE



SG01-06 STEEL



SG01-07 CACTUS



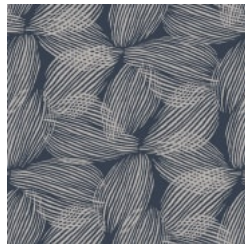
SG01-08 CINNABAR



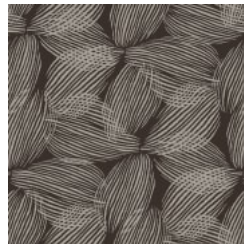
SG01-09
COBBLESTONE



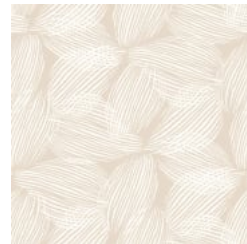
SG01-10 BLUESTONE



SG01-11 NAVY



SG01-12 ONYX



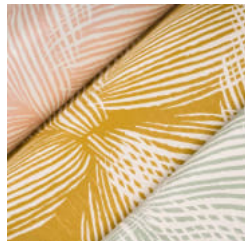
SG01-13 BIRCH



SG01-14 PETAL



SG01-15 MOCHA



esplanade-promo-2.jpg



esplanade-promo-3.jpg

ESPLANADE

Wallcoverings » Commercial Wallcoverings

Esplanade is a 137cm wide commercial wallcovering with a soft geometric pattern inspired by flower's petals that's available in 15 colours.

Description A soft geometric pattern teeming with movement, Esplanade is inspired by the petals of flowers from the lush Brooklyn Botanical Garden as they dance in the wind. The design is included in 15 colorways. Features + Benefits * Bleach cleanable * 15 Colourways * Highly durable * Anti-mircobial * Low VOC

Roll Size 137cm wide x 27.4m - Available by the lineal metre

Composition Vinyl face on a non-woven backing

Pattern Repeat Size 46cm V

Environmental Info

- Formaldehyde free
- Heavy metals free
- Perfluorooctanoic acid free
- No solvent inks

Low VOC emissions. Any VOCs dissipate quickly (faster than paint) through normal ventilation and have no recognized adverse impact on indoor air quality.

Durability means products do not need to be replaced regularly due to wear and tear and being cleanable, vinyl products are ideal for helping keep commercial environments clean of bacteria.

Baresque will only deal with vinyl manufacturers that comply with applicable state and federal regulations, provide a factory that is safe and clean for its employees to work in, recycle scrap and inks during the manufacturing process to minimize waste related to production.

Fire Rating Tested in accordance with AS ISO 9705 2003 for the purpose of determining the Group Number classification as required by the Building Code of Australia for the control of fire spread on interior wall and ceiling linings.

The result achieved was:
Classification - Group 2
Specific Extinction - Less than 250m²/kg

Warranty 5-year warranty. Visit [baresque.com.au/warranty](https://www.baresque.com.au/warranty) for complete details.

ESPLANADE

Wallcoverings » Commercial Wallcoverings

Lead Time

- 2-weeks (approx.) from Wednesday, subject to stock availability.
 - Additional 1-week for Western Australia.
 - Express delivery is available subject to a surcharge. Contact Baresque for details and pricing.
-

Suggested Installation

Non reverse hang/overlap double cut.
Baresque recommends and supplies Roman brand adhesives and primers.

Care Instructions

Use cloth with any of the following in preferred order of use:

- 1: Clear warm water
- 2: Mild solution of liquid detergent and warm water
- 3: Isopropyl Alcohol (a.k.a. rubbing alcohol)

Remove any detergent with a clean, damp cloth. Gently pat dry.

For more difficult stains, dampen a soft white cloth with a solution of household bleach (10% bleach / 90% water). Rub gently.

Rinse with a water dampened cloth to remove bleach concentration.

Do not use solvent based or concentrated abrasive cleaning agents, lacquer thinners or nail polish remover as these may cause discolouration over a period of time.

Always test in an inconspicuous area first.

If care instructions don't deliver the expected results, cease cleaning method immediately and contact Baresque for assistance.

ESPLANADE

Wallcoverings » Commercial Wallcoverings

Colour & Finish Options