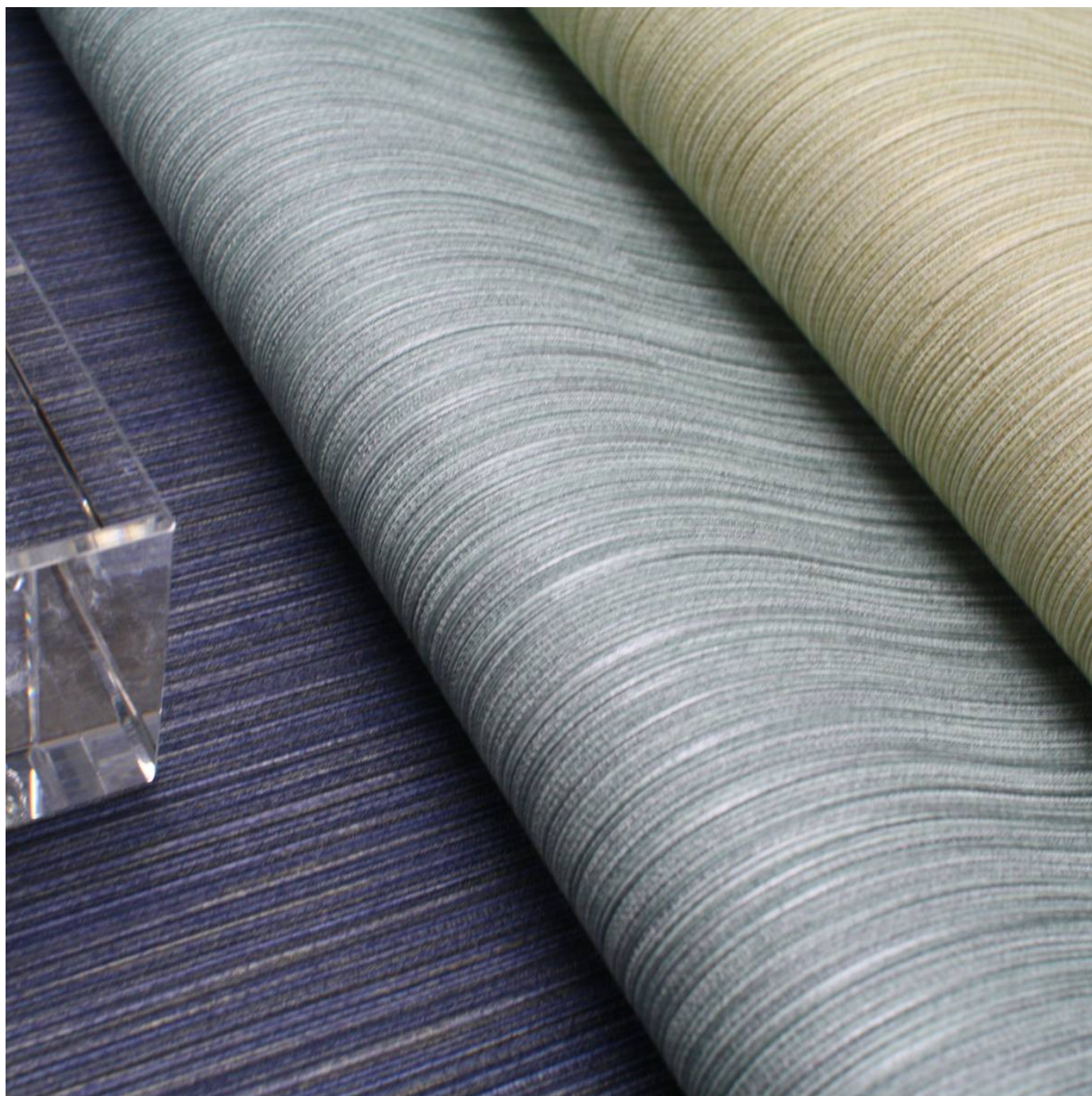


FIJI ASL

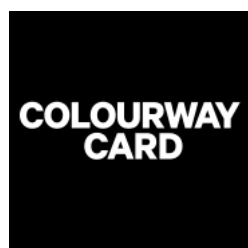
Wallcoverings » Commercial Wallcoverings



Brand: **Versa**

FIJI ASL

Wallcoverings » Commercial Wallcoverings



COLOURWAY CARD



ASL-139012 SEA SALT



ASL-139111 IVORY



ASL-139147 OYSTER



ASL-139156 EGG SHELL



ASL-139258
SAWGRASS



ASL-139318 AZURE



ASL-139327 LAGOON



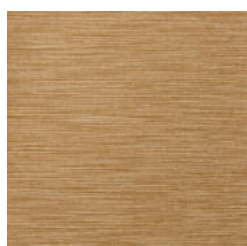
ASL-139350
BLUEBERRY



ASL-139397 TURK



ASL-139421 SUNRISE



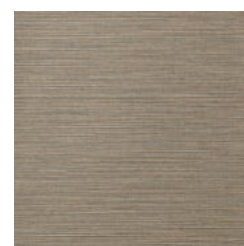
ASL-139463 PEKOE



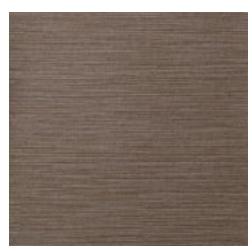
ASL-139503 COFFEE
BEAN



ASL-139510
SANDROCK



ASL-139515 OREGANO



ASL-139523 TEAK



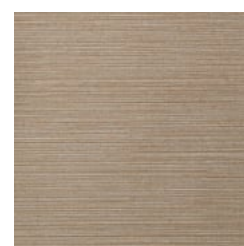
ASL-139527 BRINDLE



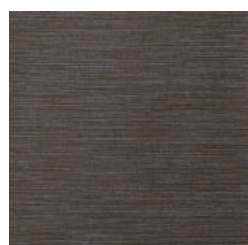
ASL-139531 EARL
GREY



ASL-139564
SILVERDUST



ASL-139569 CORAL
SAND



ASL-139585
NIGHTSHADE



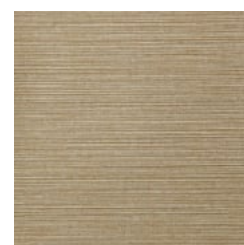
ASL-139622 PAPRIKA



ASL-139633 CUMIN



ASL-139735 WHEAT



ASL-139774 MUSTARD
SEED

FIJI ASL

Wallcoverings » Commercial Wallcoverings



ASL-139800 BEACH
FOG



ASL-139845 STORM
CLOUD



ASL-139860 DILL



ASL-139892 SILVER
LEAF

FIJI ASL

Wallcoverings » Commercial Wallcoverings

Fiji is a 137cm wide commercial wallcovering with a gracious natural-like texture that's available in 28 colourways. It's versatile and durable.

✓ **Bleach Cleanable**

Description	Gracious natural-like texture full of charm and personality
-------------	---

Roll Size	137cm wide x 27.4m - Available by the lineal metre
-----------	--

Composition	Vinyl face on a fabric backing 20oz (452 g/m ²)
-------------	---

Pattern Repeat Size	N/A
---------------------	-----

Environmental Info	<p>Formaldehyde free</p> <p>Heavy metals free</p> <p>Perfluorooctanoic acid free</p> <p>No solvent inks</p> <p>Low VOC emissions. Any VOCs dissipate quickly (faster than paint) through normal ventilation and have no recognized adverse impact on indoor air quality.</p> <p>Durability means products do not need to be replaced regularly due to wear and tear and being cleanable, vinyl products are ideal for helping keep commercial environments clean of bacteria.</p> <p>Baresque will only deal with vinyl manufacturers that comply with applicable state and federal regulations, provide a factory that is safe and clean for its employees to work in, recycle scrap and inks during the manufacturing process to minimize waste related to production.</p>
--------------------	--

Fire Rating	<p>Tested in accordance with AS ISO 9705 2003 for the purpose of determining the Group Number classification as required by the Building Code of Australia for the control of fire spread on interior wall and ceiling linings.</p> <p>The result achieved was: Classification - Group 2 Specific Extinction - Less than 250m²/kg</p>
-------------	--

Warranty	5-year warranty. Visit baresque.com.au/warranty for complete details.
----------	--

FIJI ASL

Wallcoverings » Commercial Wallcoverings

Lead Time

- 2-weeks (approx.) from Wednesday, subject to stock availability.
 - Additional 1-week for Western Australia.
 - Express delivery is available subject to a surcharge. Contact Baresque for details and pricing.
-

Suggested Installation

Non reverse hang/overlap double cut.
Baresque recommends and supplies Roman brand adhesives and primers.

Care Instructions

Always use a clean, white, soft cloth.

Use cloth with any of the following in preferred order of us:

1: Clear warm water

2: Mild solution of liquid detergent and warm water

3: Isopropyl Alcohol (a.k.a. rubbing alcohol)

Remove any detergent with a clean, damp cloth. Gently pat dry.

For more difficult stains, dampen a soft white cloth with a solution of household bleach (10% bleach / 90% water). Rub gently.

Rinse with a water dampened cloth to remove bleach concentration.

DO NOT USE solvent based or concentrated abrasive cleaning agents, lacquer thinners, nail polish remover as these may cause discolouration over a period of time.

Always test in an inconspicuous area first. If care instructions don't deliver the expected results, cease cleaning method immediately and contact Baresque for assistance.

FIJI ASL

Wallcoverings » Commercial Wallcoverings

Colour & Finish Options