

# HIGHRISE

Wallcoverings » Commercial Wallcoverings



Brand: **Koroseal**

# HIGHRISE

Wallcoverings » Commercial Wallcoverings

## COLOURWAY CARD

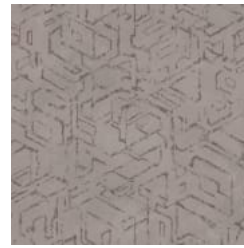
COLOURWAY CARD



SG06-01 ALABASTER



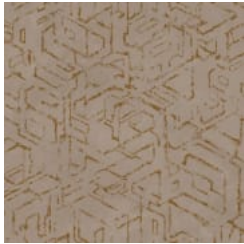
SG06-02 ALUMINUM



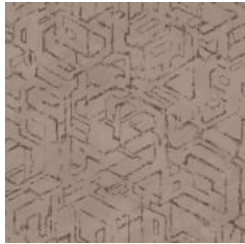
SG06-03 CEMENT



SG06-04 STEEL



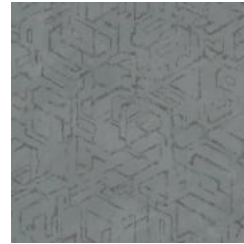
SG06-05 SILT



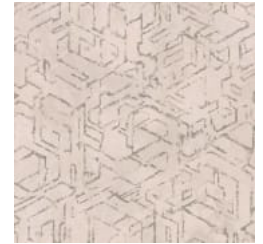
SG06-06 SANDSTONE



SG06-07 JADE



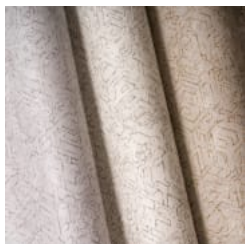
SG06-08 BLUE  
KYANITE



SG06-09 QUARTZITE



highrise-sandstone-  
sg06-06-promo-2.jpg



highrise-aluminum-  
promo-3.jpg

# HIGHRISE

Wallcoverings » Commercial Wallcoverings

Highrise is a 137cm wide commercial wallcovering that merges organic elements with geometric patterning that's available in 9 colourways.

---

Description	Highrise merges organic elements with geometric patterning, encompassing the evolution of an urban city grid from strong standing brownstones to the revolutionary skyscrapers, creating a wallcovering that is adaptable and versatile. The design is offered in 9 luxe colourways and coordinates with Cityscape, a plain textural design. Features + Benefits * Bleach cleanable * 9 Colourways * Highly durable * Anti-microbial * Low VOC
Roll Size	137cm wide x 27.4m - Available by the lineal metre
Composition	Vinyl face on a non-woven backing
Pattern Repeat Size	46cm V
Environmental Info	<p>Formaldehyde free</p> <p>Heavy metals free</p> <p>Perfluorooctanoic acid free</p> <p>No solvent inks</p> <p>Low VOC emissions. Any VOCs dissipate quickly (faster than paint) through normal ventilation and have no recognized adverse impact on indoor air quality.</p> <p>Durability means products do not need to be replaced regularly due to wear and tear and being cleanable, vinyl products are ideal for helping keep commercial environments clean of bacteria.</p> <p>Baresque will only deal with vinyl manufacturers that comply with applicable state and federal regulations, provide a factory that is safe and clean for its employees to work in, recycle scrap and inks during the manufacturing process to minimize waste related to production.</p>
Fire Rating	<p>Tested in accordance with AS ISO 9705 2003 for the purpose of determining the Group Number classification as required by the Building Code of Australia for the control of fire spread on interior wall and ceiling linings.</p> <p>The result achieved was: Classification - Group 2 Specific Extinction - Less than 250m<sup>2</sup>/kg</p>
Warranty	5-year warranty. Visit <a href="https://www.baresque.com.au/warranty">baresque.com.au/warranty</a> for complete details.

---

# HIGHRISE

Wallcoverings » Commercial Wallcoverings

---

## Lead Time

- 2-weeks (approx.) from Wednesday, subject to stock availability.
  - Additional 1-week for Western Australia.
  - Express delivery is available subject to a surcharge. Contact Baresque for details and pricing.
- 

## Suggested Installation

Reverse hang / overlap and double cut.  
Baresque recommends and supply Roman brand adhesives and primers.

---

## Care Instructions

Use cloth with any of the following in preferred order of use:

- 1: Clear warm water
- 2: Mild solution of liquid detergent and warm water
- 3: Isopropyl Alcohol (a.k.a. rubbing alcohol)

Remove any detergent with a clean, damp cloth. Gently pat dry.

For more difficult stains, dampen a soft white cloth with a solution of household bleach (10% bleach / 90% water). Rub gently.

Rinse with a water dampened cloth to remove bleach concentration.

Do not use solvent based or concentrated abrasive cleaning agents, lacquer thinners or nail polish remover as these may cause discolouration over a period of time.

Always test in an inconspicuous area first.

If care instructions don't deliver the expected results, cease cleaning method immediately and contact Baresque for assistance.

---

# HIGHRISE

Wallcoverings » Commercial Wallcoverings

---

## Colour & Finish Options