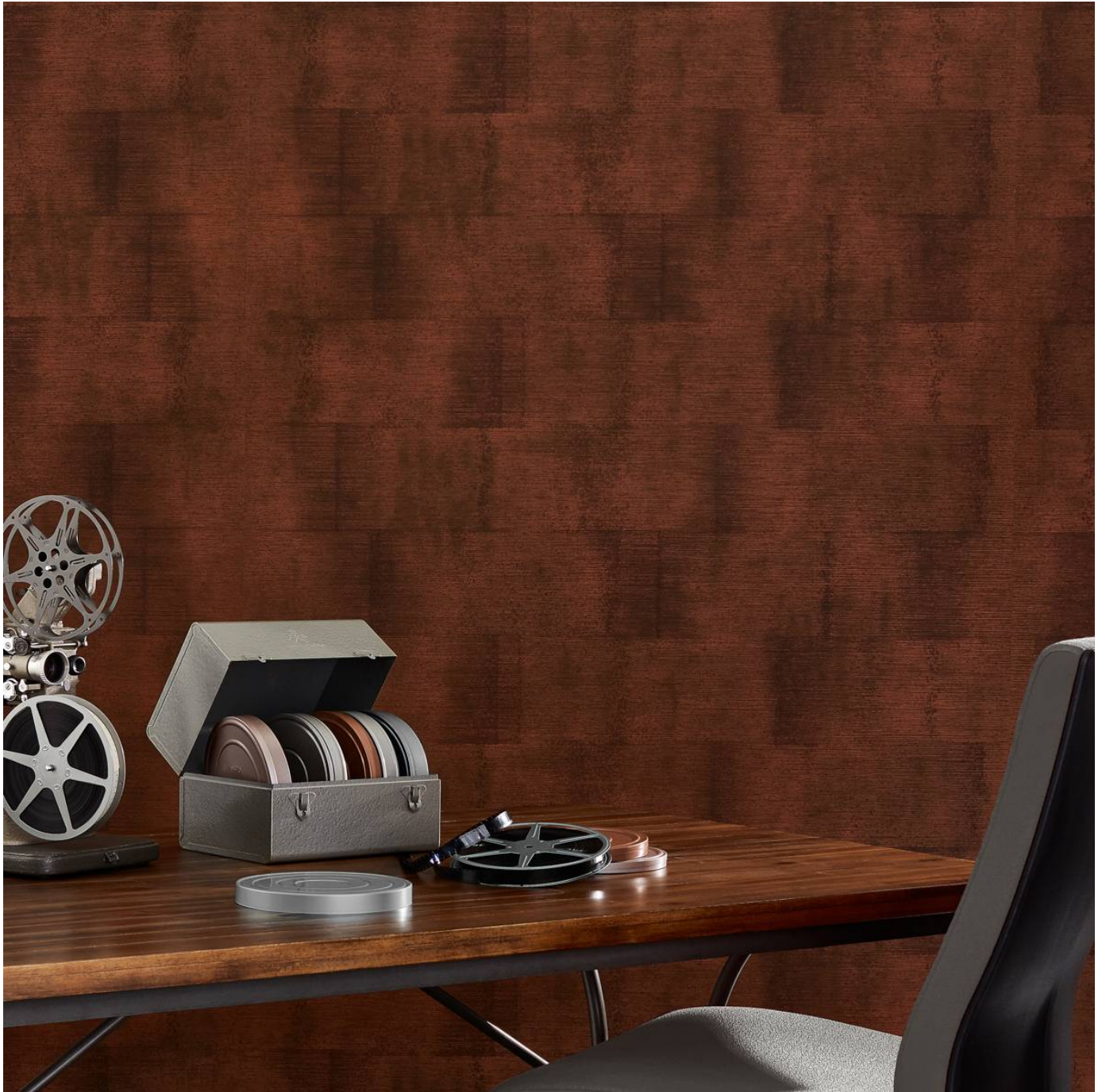


JAILHOUSE ROCKS

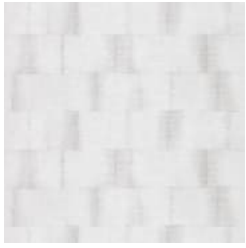
Wallcoverings » Commercial Wallcoverings



Brand: **Symphony**

JAILHOUSE ROCKS

Wallcoverings » Commercial Wallcoverings



AZ53035 WHITE
BRICK



AZ53036 MOON
STONE



AZ53037 SMOKEY
GREY



AZ53038 BLACK
ONYX



AZ53039 IVORY
AGATE



AZ53040 AZTEC
SAND



AZ53041 CHLORITE



AZ53042 COPPER

JAILHOUSE ROCKS

Wallcoverings » Commercial Wallcoverings

Jailhouse Rocks is a 132cm wide commercial wallcovering featuring a shaded cement wall pattern displayed in 8 colourways. Versatile and durable.

✓ **Bleach Cleanable**

Description Rock legends come from near and far to see Symphony's Jailhouse Rocks. This breakout large-scale design features a shaded cement wall pattern, new horizontal texture and weathered metal colour influences.

Roll Size 132cm wide X 27.4m- Available by the lineal metre.

Composition Vinyl face on a fabric backing 20oz (452 g/m²)

Pattern Repeat Size 61cm H x 132cm W

Environmental Info

- Formaldehyde free
- Heavy metals free
- Perfluorooctanoic acid free
- No solvent inks

Low VOC emissions. Any VOCs dissipate quickly (faster than paint) through normal ventilation and have no recognized adverse impact on indoor air quality.

Durability means products do not need to be replaced regularly due to wear and tear and being cleanable, vinyl products are ideal for helping keep commercial environments clean of bacteria.

Baresque will only deal with vinyl manufacturers that comply with applicable state and federal regulations, provide a factory that is safe and clean for its employees to work in, recycle scrap and inks during the manufacturing process to minimize waste related to production.

Fire Rating Tested in accordance with AS ISO 9705 2003 for the purpose of determining the Group Number classification as required by the Building Code of Australia for the control of fire spread on interior wall and ceiling linings.

The result achieved was:
Classification - Group 2
Specific Extinction - Less than 250m²/kg

Warranty 5-year warranty. Visit [baresque.com.au/warranty](https://www.baresque.com.au/warranty) for complete details.

JAILHOUSE ROCKS

Wallcoverings » Commercial Wallcoverings

Lead Time

- 2-weeks (approx.) from Wednesday, subject to stock availability.
 - Additional 1-week for Western Australia.
 - Express delivery is available subject to a surcharge. Contact Baresque for details and pricing.
-

Suggested Installation

Reverse hang / overlap and double cut.
Baresque recommends and supply Roman brand adhesives and primers.

Care Instructions

Use cloth with any of the following in preferred order of use:

- 1: Clear warm water
- 2: Mild solution of liquid detergent and warm water
- 3: Isopropyl Alcohol (a.k.a. rubbing alcohol)

Remove any detergent with a clean, damp cloth. Gently pat dry.

For more difficult stains, dampen a soft white cloth with a solution of household bleach (10% bleach / 90% water). Rub gently.

Rinse with a water dampened cloth to remove bleach concentration.

Do not use solvent based or concentrated abrasive cleaning agents, lacquer thinners or nail polish remover as these may cause discolouration over a period of time.

Always test in an inconspicuous area first.

If care instructions don't deliver the expected results, cease cleaning method immediately and contact Baresque for assistance.

JAILHOUSE ROCKS

Wallcoverings » Commercial Wallcoverings

Colour & Finish Options