

KOURI

Wallcoverings » Commercial Wallcoverings



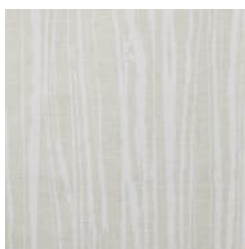
Brand: **Versa**

KOURI

Wallcoverings » Commercial Wallcoverings



A158-049 NICKEL



A158-196 SAND
PEARL



A158-255 ELECTRA



A158-310 TEMPEST



A158-332 WIRED
COPPER



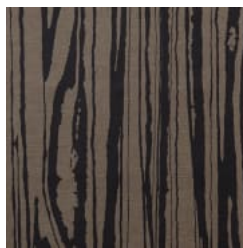
A158-351 RASPBERRY



A158-364 EBONY



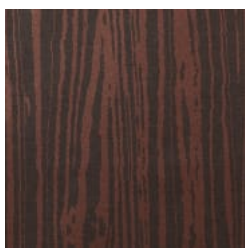
A158-480 TREASURE
ISLAND



A158-506 CHAR



A158-578 SILVERMINE



A158-611 SIENNA



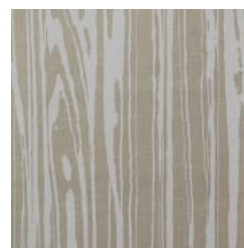
A158-708 GOLD DROP



A158-833 BIRCH



A158-858 WHITE ASH



A158-892 FLAX

KOURI

Wallcoverings » Commercial Wallcoverings

Kouri is a 137cm wide commercial wallcovering with a sophisticated design and a texture of wood grain displayed in 15 colours. Versatile and durable.

✓ **Bleach Cleanable**

Description A sophisticated design with the timeless texture of wood grain combined with neutral and exotic hues.

Roll Size 137cm wide x 27.4m - Available by the lineal metre

Composition Vinyl face on a fabric backing 20oz (452 g/m²)

Pattern Repeat Size 61cm V

Environmental Info

- Formaldehyde free
- Heavy metals free
- Perfluorooctanoic acid free
- No solvent inks

Low VOC emissions. Any VOCs dissipate quickly (faster than paint) through normal ventilation and have no recognized adverse impact on indoor air quality.

Durability means products do not need to be replaced regularly due to wear and tear and being cleanable, vinyl products are ideal for helping keep commercial environments clean of bacteria.

Baresque will only deal with vinyl manufacturers that comply with applicable state and federal regulations, provide a factory that is safe and clean for its employees to work in, recycle scrap and inks during the manufacturing process to minimize waste related to production.

Fire Rating Tested in accordance with AS ISO 9705 2003 for the purpose of determining the Group Number classification as required by the Building Code of Australia for the control of fire spread on interior wall and ceiling linings.

The result achieved was:
Classification - Group 2
Specific Extinction - Less than 250m²/kg

Warranty 5-year warranty. Visit [baresque.com.au/warranty](https://www.baresque.com.au/warranty) for complete details.

KOURI

Wallcoverings » Commercial Wallcoverings

- Lead Time**
- 2-weeks (approx.) from Wednesday, subject to stock availability.
 - Additional 1-week for Western Australia.
 - Express delivery is available subject to a surcharge. Contact Baresque for details and pricing.
-

Suggested Installation

Reverse hang / overlap and double cut.

Baresque recommends and supply Roman brand adhesives and primers.

Care Instructions

Always use a clean, white, soft cloth.

Use cloth with any of the following in preferred order of us:

- 1: Clear warm water
- 2: Mild solution of liquid detergent and warm water
- 3: Isopropyl Alcohol (a.k.a. rubbing alcohol)

Remove any detergent with a clean, damp cloth. Gently pat dry.

For more difficult stains, dampen a soft white cloth with a solution of household bleach (10% bleach / 90% water). Rub gently.

Rinse with a water dampened cloth to remove bleach concentration.

DO NOT USE solvent based or concentrated abrasive cleaning agents, lacquer thinners, nail polish remover as these may cause discolouration over a period of time.

Always test in an inconspicuous area first. If care instructions don't deliver the expected results, cease cleaning method immediately and contact Baresque for assistance.

KOURI

Wallcoverings » Commercial Wallcoverings

Colour & Finish Options