

# LUZON

Wallcoverings » Commercial Wallcoverings

---



Brand: **Koroseal**

# LUZON

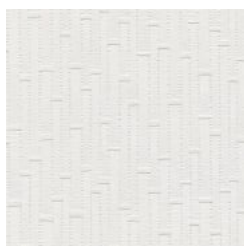
Wallcoverings » Commercial Wallcoverings

## COLOURWAY CARD

COLOURWAY CARD



LUZ1-01  
ARCHIPELAGO



LUZ1-02 ISLAND



LUZ1-03 SUGARCANE



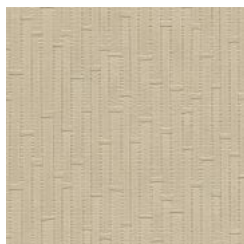
LUZ1-04 MANGO



LUZ1-05 LAGUNA



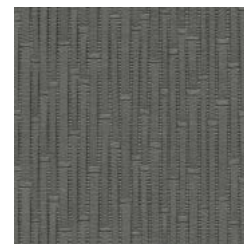
LUZ1-06 TAAL LAKE



LUZ1-07 RICE  
TERRACE



LUZ1-08 BASKETRY



LUZ1-09 MANILA BAY



LUZ1-10 PHILIPPINE  
SEA



LUZ1-11 GOLD MINE



LUZ1-12 COCONUT



LUZ1-13 VOLCANO

# LUZON

Wallcoverings » Commercial Wallcoverings

Luzon is a 137cm wide commercial wallcovering created with 3D-engraved embossing rollers featuring a proprietary texture. Available in 13 colourways.

---

Description	Luzon has been created with new, state-of-the-art, 3D-engraved embossing rollers. Featuring an innovative, proprietary texture and a clean, fresh colour palette, this design is inspired by fabric texture, geometry and architecture delivering an overall contemporary feel.
Roll Size	137cm wide x 27.4m - Available by the lineal metre
Composition	Vinyl face on a fabric backing 750g/m <sup>2</sup>
Pattern Repeat Size	68.6cm V
Environmental Info	<p>Formaldehyde free</p> <p>Heavy metals free</p> <p>Perfluorooctanoic acid free</p> <p>No solvent inks</p> <p>Low VOC emissions. Any VOCs dissipate quickly (faster than paint) through normal ventilation and have no recognized adverse impact on indoor air quality.</p> <p>Durability means products do not need to be replaced regularly due to wear and tear and being cleanable, vinyl products are ideal for helping keep commercial environments clean of bacteria.</p> <p>Baresque will only deal with vinyl manufacturers that comply with applicable state and federal regulations, provide a factory that is safe and clean for its employees to work in, recycle scrap and inks during the manufacturing process to minimize waste related to production.</p>
Fire Rating	<p>Tested in accordance with AS ISO 9705 2003 for the purpose of determining the Group Number classification as required by the Building Code of Australia for the control of fire spread on interior wall and ceiling linings.</p> <p>The result achieved was: Classification - Group 2 Specific Extinction - Less than 250m<sup>2</sup>/kg</p>
Warranty	5-year warranty. Visit <a href="https://www.baresque.com.au/warranty">baresque.com.au/warranty</a> for complete details.

---

# LUZON

Wallcoverings » Commercial Wallcoverings

---

## Lead Time

- 2-weeks (approx.) from Wednesday, subject to stock availability.
  - Additional 1-week for Western Australia.
  - Express delivery is available subject to a surcharge. Contact Baresque for details and pricing.
- 

## Suggested Installation

Non reverse hang/overlap double cut.  
Baresque recommends and supplies Roman brand adhesives and primers.

---

## Care Instructions

Use cloth with any of the following in preferred order of use:

- 1: Clear warm water
- 2: Mild solution of liquid detergent and warm water
- 3: Isopropyl Alcohol (a.k.a. rubbing alcohol)

Remove any detergent with a clean, damp cloth. Gently pat dry.

For more difficult stains, dampen a soft white cloth with a solution of household bleach (10% bleach / 90% water). Rub gently.

Rinse with a water dampened cloth to remove bleach concentration.

Do not use solvent based or concentrated abrasive cleaning agents, lacquer thinners or nail polish remover as these may cause discolouration over a period of time.

Always test in an inconspicuous area first.

If care instructions don't deliver the expected results, cease cleaning method immediately and contact Baresque for assistance.

---

# LUZON

Wallcoverings » Commercial Wallcoverings

---

## Colour & Finish Options