

MINETTA

Wallcoverings » Commercial Wallcoverings



Brand: **Koroseal**

MINETTA

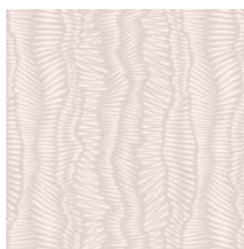
Wallcoverings » Commercial Wallcoverings

COLOURWAY CARD

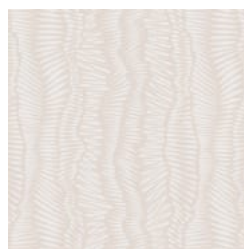
COLOURWAY CARD



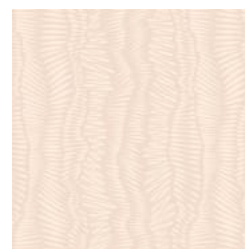
SG03-01 RICE



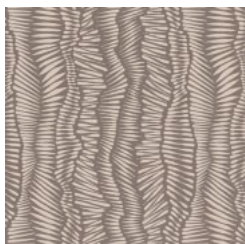
SG03-02 AIR



SG03-03 OYSTER



SG03-04 BISQUE



SG03-05 PORCINI



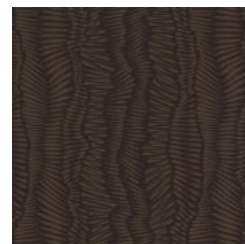
SG03-06 ICE



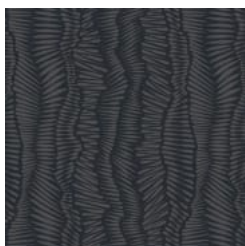
SG03-07 SEAGLASS



SG03-08 WHEAT



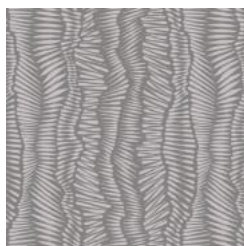
SG03-09 BRONZE



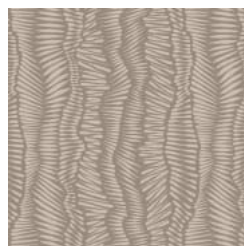
SG03-10 INDIGO



SG03-11 NAVY



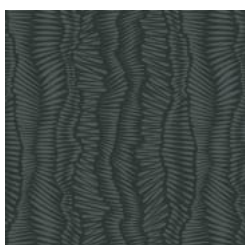
SG03-12 PEWTER



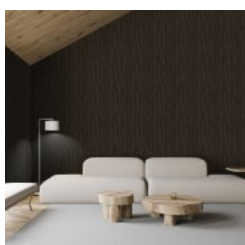
SG03-13 CEMENT



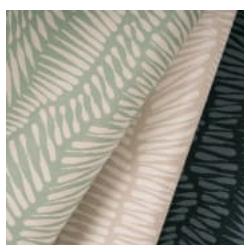
SG03-14 FERN



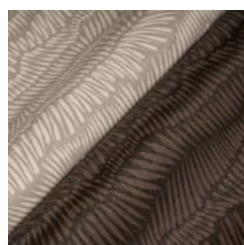
SG03-15 URBAN
JUNGLE



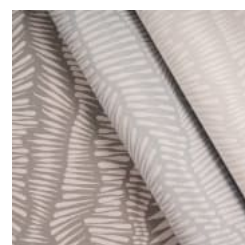
minetta-bronze-
sg03-09-promo-2.jpg



minetta-promo-3.jpg



minetta-promo-4.jpg



minetta-promo-5.jpg

MINETTA

Wallcoverings » Commercial Wallcoverings

Minetta is a 137cm wide commercial wallcovering inspired by the hustle and bustle of urban life that's available in 15 colourways.

Description

Inspired by the hustle and bustle of urban life, Minetta is a visual representation of the perfectly imperfect migration path as one navigates through lively city streets.

Minetta is a distinctively unique pattern which graphically represents the ebb and flow of foot traffic in the city.

The organic synchronicity that occurs naturally serves as the inspiration behind this conceptual design, making it the perfect conversational wallcovering.

Features + Benefits

- * Bleach cleanable
- * 15 Colourways
- * Highly durable
- * Anti-microbial
- * Low VOC

Roll Size

137cm wide x 27.4m - Available by the lineal metre

Composition

Vinyl face on a non-woven backing

Pattern Repeat Size

46cm V

Environmental Info

Formaldehyde free

Heavy metals free

Perfluorooctanoic acid free

No solvent inks

Low VOC emissions. Any VOCs dissipate quickly (faster than paint) through normal ventilation and have no recognized adverse impact on indoor air quality.

Durability means products do not need to be replaced regularly due to wear and tear and being cleanable, vinyl products are ideal for helping keep commercial environments clean of bacteria.

Baresque will only deal with vinyl manufacturers that comply with applicable state and federal regulations, provide a factory that is safe and clean for its employees to work in, recycle scrap and inks during the manufacturing process to minimize waste related to production.

MINETTA

Wallcoverings » Commercial Wallcoverings

Fire Rating Tested in accordance with AS ISO 9705 2003 for the purpose of determining the Group Number classification as required by the Building Code of Australia for the control of fire spread on interior wall and ceiling linings.

The result achieved was:
Classification - Group 2
Specific Extinction - Less than 250m²/kg

Warranty 5-year warranty. Visit baresque.com.au/warranty for complete details.

Lead Time

- 2-weeks (approx.) from Wednesday, subject to stock availability.
- Additional 1-week for Western Australia.
- Express delivery is available subject to a surcharge. Contact Baresque for details and pricing.

Suggested Installation Non reverse hang/overlap double cut.
Baresque recommends and supplies Roman brand adhesives and primers.

Care Instructions Use cloth with any of the following in preferred order of use:

- 1: Clear warm water
- 2: Mild solution of liquid detergent and warm water
- 3: Isopropyl Alcohol (a.k.a. rubbing alcohol)

Remove any detergent with a clean, damp cloth. Gently pat dry.

For more difficult stains, dampen a soft white cloth with a solution of household bleach (10% bleach / 90% water). Rub gently.

Rinse with a water dampened cloth to remove bleach concentration.

Do not use solvent based or concentrated abrasive cleaning agents, lacquer thinners or nail polish remover as these may cause discolouration over a period of time.

Always test in an inconspicuous area first.

If care instructions don't deliver the expected results, cease cleaning method immediately and contact Baresque for assistance.

MINETTA

Wallcoverings » Commercial Wallcoverings

Colour & Finish Options