

OFF THE GRID

Wallcoverings » Commercial Wallcoverings



Brand: **Genon**

Applications: **Walls**

1300 306 399

info@baresque.com.au

baresque.com.au

1 of 6

OFF THE GRID

Wallcoverings » Commercial Wallcoverings



off-the-grid-promo-2.jpg

1300 306 399

info@baresque.com.au

baresque.com.au

2 of 6

OFF THE GRID

Wallcoverings » Commercial Wallcoverings

Off the Grid is a 137cm wide commercial wallcovering with a symmetrical open weave displayed in 24 colours. It's durable, versatile and easy to clean.

✓ Bleach Cleanable

Description	Stay connected to the symmetrical open weave, Off the Grid. Find solace with 24 colours including Caicos Beach, Blue Galaxy and Sparking moon.
Composition	Vinyl face on a fabric backing. Equivalent to 20oz (452 g/m ²)
Environmental Info	<p>Formaldehyde free</p> <p>Heavy metals free</p> <p>Perfluorooctanoic acid free</p> <p>No solvent inks</p> <p>Low VOC emissions. Any VOCs dissipate quickly (faster than paint) through normal ventilation and have no recognized adverse impact on indoor air quality.</p> <p>Durability means products do not need to be replaced regularly due to wear and tear and being cleanable, vinyl products are ideal for helping keep commercial environments clean of bacteria.</p> <p>Baresque will only deal with vinyl manufacturers that comply with applicable state and federal regulations, provide a factory that is safe and clean for its employees to work in, recycle scrap and inks during the manufacturing process to minimize waste related to production.</p>
Pattern Repeat Size	N/A
Roll Size	137cm wide x 27.4m - Available by the lineal metre
Fire Rating	<p>Tested in accordance with AS ISO 9705 2003 for the purpose of determining the Group Number classification as required by the Building Code of Australia for the control of fire spread on interior wall and ceiling linings.</p> <p>The result achieved was: Classification - Group 2 Specific Extinction - Less than 250m²/kg</p>
Lead Time	<ul style="list-style-type: none">• 2-weeks (approx.) from Wednesday, subject to stock availability.• Additional 1-week for Western Australia.• Express delivery is available subject to a surcharge. Contact Baresque for details and pricing.

OFF THE GRID

Wallcoverings » Commercial Wallcoverings

Suggested Installation

Reverse hang / overlap and double cut.

Baresque recommends and supply Roman brand adhesives and primers.

Care Instructions

Use cloth with any of the following in preferred order of use:

1: Clear warm water

2: Mild solution of liquid detergent and warm water

3: Isopropyl Alcohol (a.k.a. rubbing alcohol)

Remove any detergent with a clean, damp cloth. Gently pat dry.

For more difficult stains, dampen a soft white cloth with a solution of household bleach (10% bleach / 90% water). Rub gently.

Rinse with a water dampened cloth to remove bleach concentration.

Do not use solvent based or concentrated abrasive cleaning agents, lacquer thinners or nail polish remover as these may cause discolouration over a period of time.

Always test in an inconspicuous area first.

If care instructions don't deliver the expected results, cease cleaning method immediately and contact Baresque for assistance.

Warranty

5-year warranty. Visit baresque.com.au/warranty for complete details.

OFF THE GRID

Wallcoverings » Commercial Wallcoverings

Colour & Finish Options

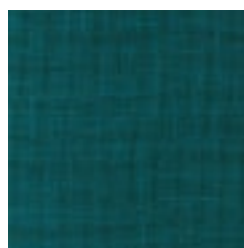
COLOURWAY CARD



W2-TG-01 ASTER
LILAC



W2-TG-02 MAGENTA
SURPRISE



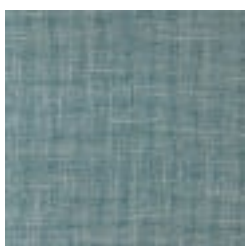
W2-TG-03 BLUE
GALAXY



W2-TG-04 CAICOS
BEACH



W2-TG-05 KAINDY
TEAL



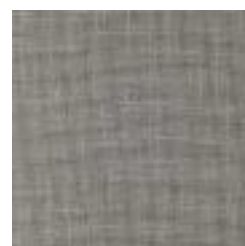
W2-TG-06 DEEP
TIDES



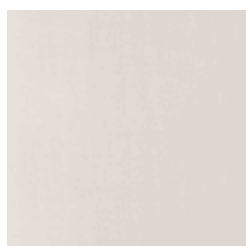
W2-TG-07 BABY
RHINO



W2-TG-08
CROSSWORD PUZZLE



W2-TG-09 ELEPHANT
TRIBE



W2-TG-10 POLAR
BEAR SWIM



W2-TG-11 SPARKLING
MOON



W2-TG-12 CHARCOAL
LUSTER



W2-TG-13 BAD TO
THE BONE



W2-TG-14 TRANQUIL
TAUPE



W2-TG-15 MINK IN
THE DARK



W2-TG-16
CHAMPAGNE ET
CREME



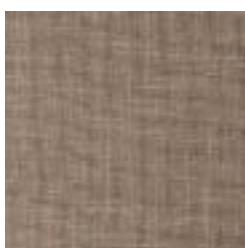
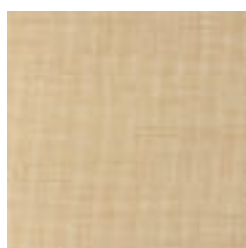
W2-TG-17 SILKY GOLD



W2-TG-18 ICING ON
THE CAKE



W2-TG-19 VINTAGE
GOLD



OFF THE GRID

Wallcoverings » Commercial Wallcoverings

W2-TG-20
CAPPUCCINO

W2-TG-21 BLUSHING
BLACK

W2-TG-22 ROSE GOLD
FLICKER

W2-TG-23 SALMON
BEURRE

W2-TG-24 PINK
CONVICTION