

PLAIDISH

Wallcoverings » Commercial Wallcoverings



Brand: **Genon**

PLAIDISH

Wallcoverings » Commercial Wallcoverings

COLOURWAY CARD

COLOURWAY CARD



W2-PH-01 NOTES OF
VANILLA



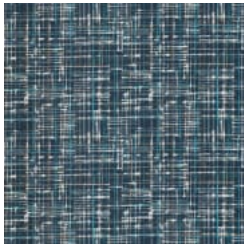
W2-PH-02 SMOKY
LUSTER



W2-PH-03 SANDY
PEARL



W2-PH-04 SINCERE
SAGE



W2-PH-05 INDIGO
SURPRISE



W2-PH-06 MIDNIGHT
RUN



W2-PH-07 MINKY
MINT

PLAIDISH

Wallcoverings » Commercial Wallcoverings

Plaidish is a 137cm wide commercial wallcovering with a mix of painterly splashes and modern colour design displayed in 7 colours. Durable and versatile

✓ **Bleach Cleanable**

Description Artist strokes, painterly splashes and modern colour options transform this novel menswear pattern. Note the many moods of Plaidish across its 7 monochromatic colours with notes of Vanilla, Smoky Luster and Midnight Run.

Roll Size 137cm wide x 27.4m - Available by the lineal metre

Composition Vinyl face on a fabric backing Equivalent to 20oz (452g/m²)

Pattern Repeat Size N/A

Environmental Info

- Formaldehyde free
- Heavy metals free
- Perfluorooctanoic acid free
- No solvent inks

Low VOC emissions. Any VOCs dissipate quickly (faster than paint) through normal ventilation and have no recognized adverse impact on indoor air quality.

Durability means products do not need to be replaced regularly due to wear and tear and being cleanable, vinyl products are ideal for helping keep commercial environments clean of bacteria.

Baresque will only deal with vinyl manufacturers that comply with applicable state and federal regulations, provide a factory that is safe and clean for its employees to work in, recycle scrap and inks during the manufacturing process to minimize waste related to production.

Fire Rating Tested in accordance with AS ISO 9705 2003 for the purpose of determining the Group Number classification as required by the Building Code of Australia for the control of fire spread on interior wall and ceiling linings.

The result achieved was:
Classification - Group 2
Specific Extinction - Less than 250m²/kg

Warranty 5-year warranty. Visit [baresque.com.au/warranty](https://www.baresque.com.au/warranty) for complete details.

PLAIDISH

Wallcoverings » Commercial Wallcoverings

Lead Time

- 2-weeks (approx.) from Wednesday, subject to stock availability.
 - Additional 1-week for Western Australia.
 - Express delivery is available subject to a surcharge. Contact Baresque for details and pricing.
-

Suggested Installation

Reverse hang / overlap and double cut.
Baresque recommends and supply Roman brand adhesives and primers.

Care Instructions

Use cloth with any of the following in preferred order of use:

- 1: Clear warm water
- 2: Mild solution of liquid detergent and warm water
- 3: Isopropyl Alcohol (a.k.a. rubbing alcohol)

Remove any detergent with a clean, damp cloth. Gently pat dry.

For more difficult stains, dampen a soft white cloth with a solution of household bleach (10% bleach / 90% water). Rub gently.

Rinse with a water dampened cloth to remove bleach concentration.

Do not use solvent based or concentrated abrasive cleaning agents, lacquer thinners or nail polish remover as these may cause discolouration over a period of time.

Always test in an inconspicuous area first.

If care instructions don't deliver the expected results, cease cleaning method immediately and contact Baresque for assistance.

PLAIDISH

Wallcoverings » Commercial Wallcoverings

Colour & Finish Options