

SHADOW LEAVES

Wallcoverings » Commercial Wallcoverings



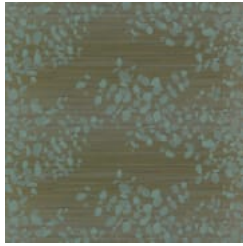
Brand: **Genon**

SHADOW LEAVES

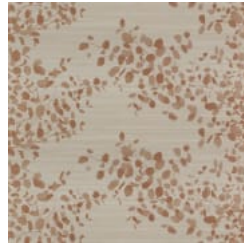
Wallcoverings » Commercial Wallcoverings

COLOURWAY CARD

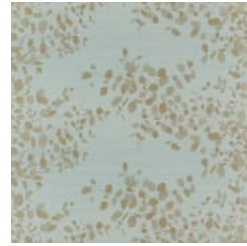
COLOURWAY CARD



W2-SL-01 PALMETTO



W2-SL-02 TENDER TAUPE



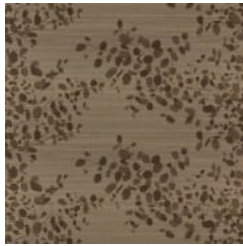
W2-SL-03 SUMMER RAIN



W2-SL-04 GOLDEN GREY



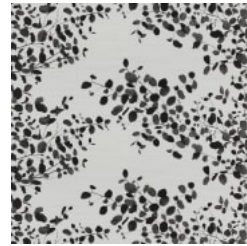
W2-SL-05 GILT



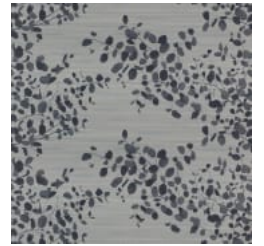
W2-SL-06 MOCHA



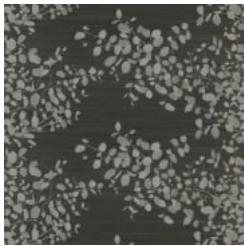
W2-SL-07 SNOW



W2-SL-08 SNOW BEAUTY



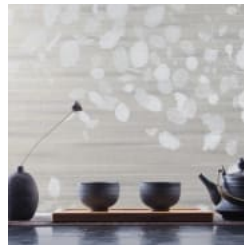
W2-SL-09 FRENCH GREY



W2-SL-10 BLACK PEARL



shadow-leaves-promo-5.jpg



shadow-leaves-promo-6.jpg



shadow-leaves-promo-1.jpg



shadow-leaves-promo-2.jpg



shadow-leaves-promo-3.jpg

SHADOW LEAVES

Wallcoverings » Commercial Wallcoverings

Shadow Leaves is a 137cm wide commercial wallcovering with a large-scale translucent leaf print that's available in 10 colourways.

✓ **Bleach Cleanable**

Description Step into nature with Shadow Leaves. This large-scale, meandering and almost translucent leaf print rests atop the coordinating Shadow Silk. Make a memorable organic statement in public areas and feature walls.

Roll Size 137cm wide x 27.4m - Available by the lineal metre

Composition Vinyl face on a fabric backing Equivalent to 20oz (452g/m²)

Pattern Repeat Size 60cm V

Environmental Info

- Formaldehyde free
- Heavy metals free
- Perfluorooctanoic acid free
- No solvent inks

Low VOC emissions. Any VOCs dissipate quickly (faster than paint) through normal ventilation and have no recognized adverse impact on indoor air quality.

Durability means products do not need to be replaced regularly due to wear and tear and being cleanable, vinyl products are ideal for helping keep commercial environments clean of bacteria.

Baresque will only deal with vinyl manufacturers that comply with applicable state and federal regulations, provide a factory that is safe and clean for its employees to work in, recycle scrap and inks during the manufacturing process to minimize waste related to production.

Fire Rating Tested in accordance with AS ISO 9705 2003 for the purpose of determining the Group Number classification as required by the Building Code of Australia for the control of fire spread on interior wall and ceiling linings.

The result achieved was:
Classification - Group 2
Specific Extinction - Less than 250m²/kg

Warranty 5-year warranty. Visit [baresque.com.au/warranty](https://www.baresque.com.au/warranty) for complete details.

SHADOW LEAVES

Wallcoverings » Commercial Wallcoverings

Lead Time

- 2-weeks (approx.) from Wednesday, subject to stock availability.
 - Additional 1-week for Western Australia.
 - Express delivery is available subject to a surcharge. Contact Baresque for details and pricing.
-

Suggested Installation

Non reverse hang/overlap double cut.
Baresque recommends and supplies Roman brand adhesives and primers.

Care Instructions

Use cloth with any of the following in preferred order of use:

- 1: Clear warm water
- 2: Mild solution of liquid detergent and warm water
- 3: Isopropyl Alcohol (a.k.a. rubbing alcohol)

Remove any detergent with a clean, damp cloth. Gently pat dry.

For more difficult stains, dampen a soft white cloth with a solution of household bleach (10% bleach / 90% water). Rub gently.

Rinse with a water dampened cloth to remove bleach concentration.

Do not use solvent based or concentrated abrasive cleaning agents, lacquer thinners or nail polish remover as these may cause discolouration over a period of time.

Always test in an inconspicuous area first.

If care instructions don't deliver the expected results, cease cleaning method immediately and contact Baresque for assistance.

SHADOW LEAVES

Wallcoverings » Commercial Wallcoverings

Colour & Finish Options